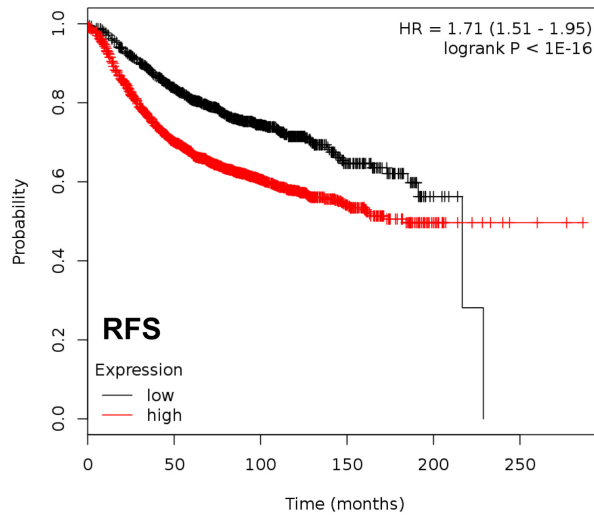


c-Myc Mito-Signature

All Breast Cancer Subtypes Combined



Supplementary Figure S1. A short c-Myc-related mitochondrial signature predicts poor clinical outcome, in all breast cancer sub-types, when combined. Note that this short 3-gene signature (HSPD1/COX5B/TIMM44) also effectively predicts tumor recurrence in a larger population of breast cancer patients (N=3,951). RFS, recurrence-free survival.