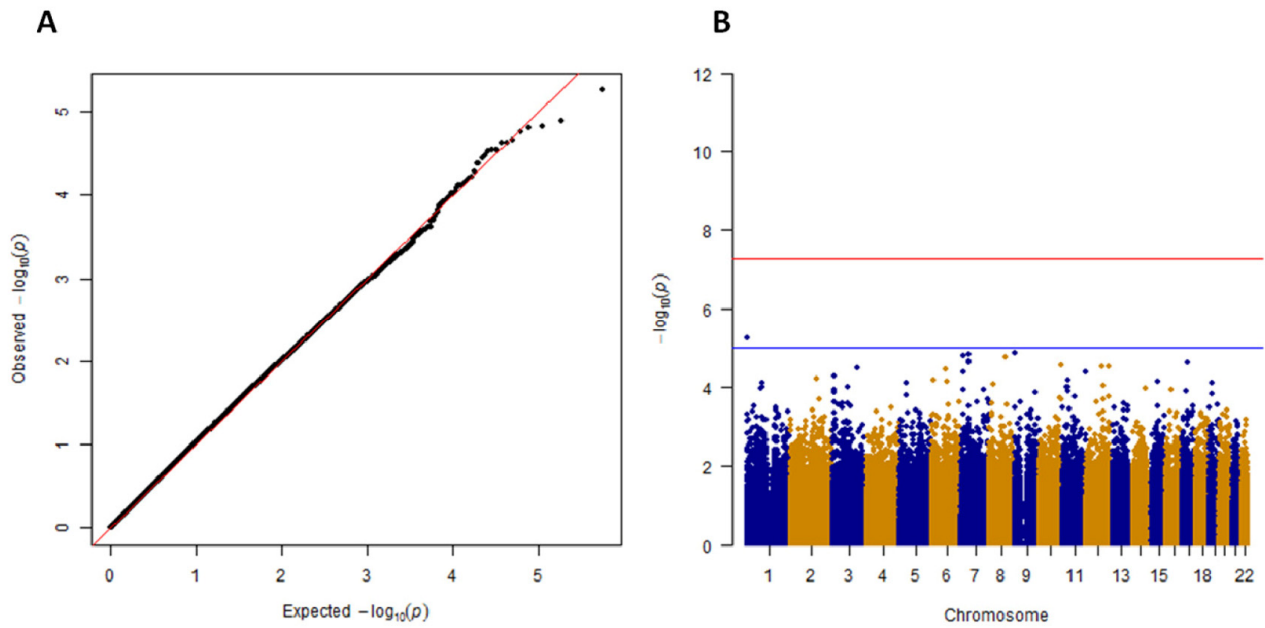


## SUPPLEMENTARY FIGURE



**Figure 15. Association analysis results.** (A) Manhattan plot of all SNPs tested for the association analysis by considering centenarians and controls. The x-axis shows SNPs according to their chromosomal positions. (B) QQplot of expected  $-\log_{10}(p)$ -values versus observed  $-\log_{10}(p)$ -values. Each variant is reported with a black dot. The genomic inflation factor for this plot is 1.02.