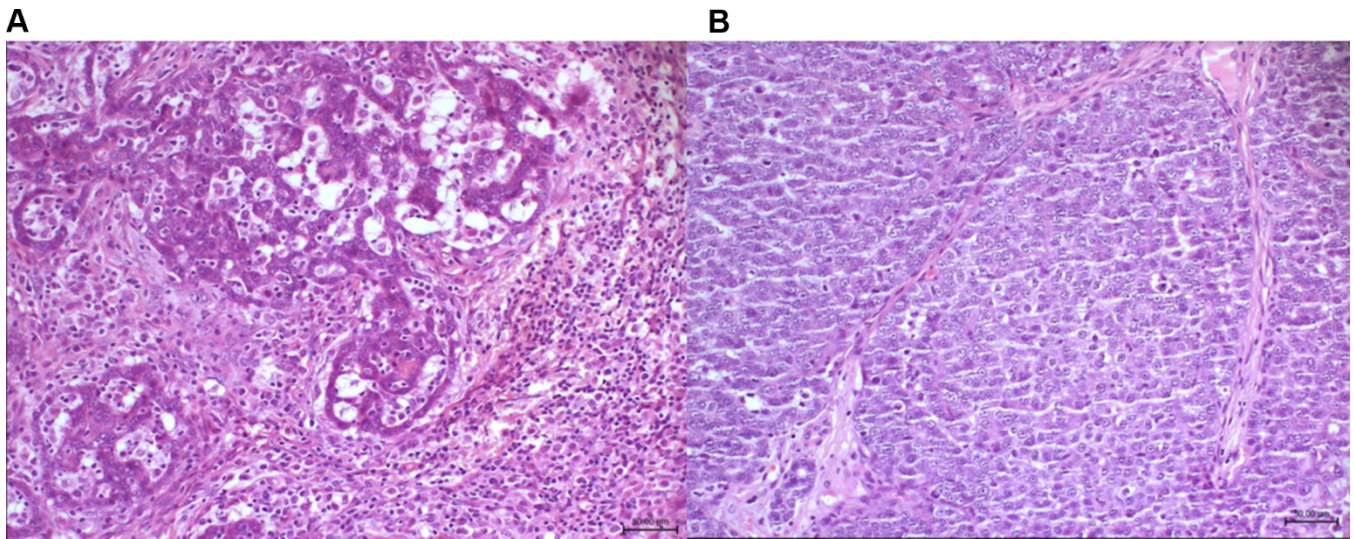


SUPPLEMENTARY FIGURE



Supplementary Figure 1. Histological examination of solid carcinomas (**A** and **B**) 7 weeks after treatment with DNA plasmids. (**A**) p62 DNA (Injection dose-1.5mg: #5 injection). (**B**) pcDNA3.1 sham vector (Injection dose-1.5mg: #5 injection). Bars, 50 µm.