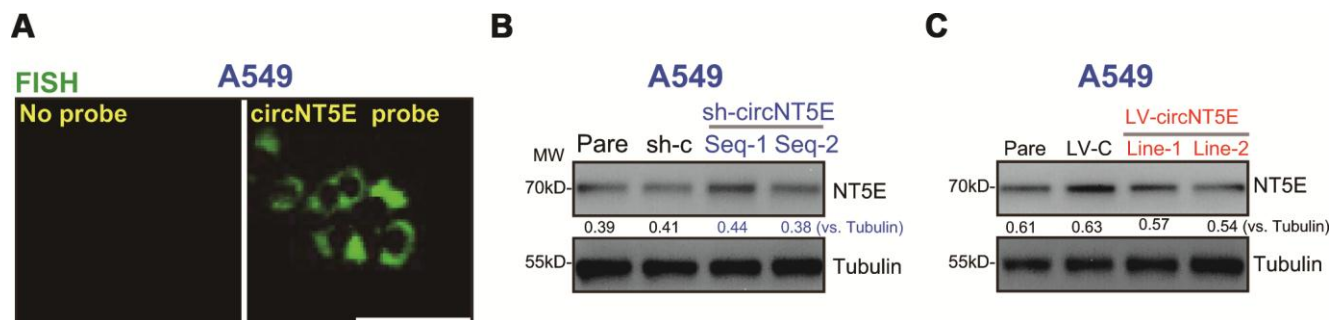


SUPPLEMENTARY MATERIALS

Supplementary Figure



Supplementary Figure 1. FISH showed the localization of circNT5E in A549 cells. (A). Expression of NT5E and Tubulin (the loading control) in stable A549 cells with circNT5E shRNA (“sh-circNT5E-Seq-1/2”), the non-sense control shRNA (“sh-c”), lentiviral circNT5E expression construct (“LV-circNT5E-Line-1/2”) or the empty vector (“LV-C”), was shown (**B** and **C**, results were quantified). Bar= 50 μ m (**A**).