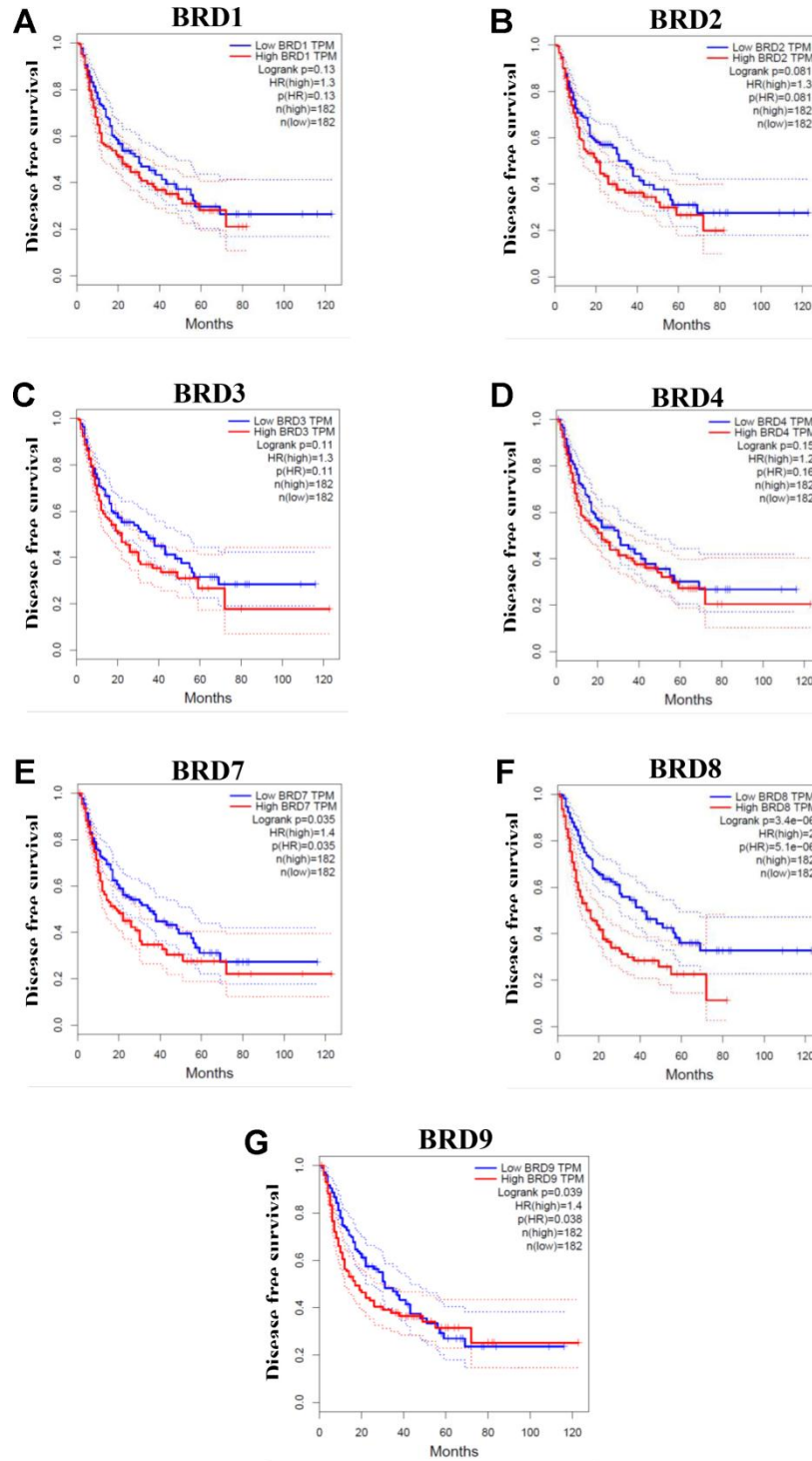


SUPPLEMENTARY FIGURE



Supplementary Figure 1. Associations between mRNA expression of each BRD-containing protein gene in tumor tissues and DFS of HCC patients (GEPIA). Each mRNA expression of BRD-containing protein gene in tumor tissue was stratified into high or low expression using the median expression value as the cut-off point. The corresponding P-value for Log-rank test in all HCC patients was showed. Higher mRNA expressions of BRD7/8/9 were significantly associated with poorer DFS in HCC patients (E–G). However, mRNA expressions of BRD1/2/3/4 showed no correlation with prognosis in HCC patients (A–D).