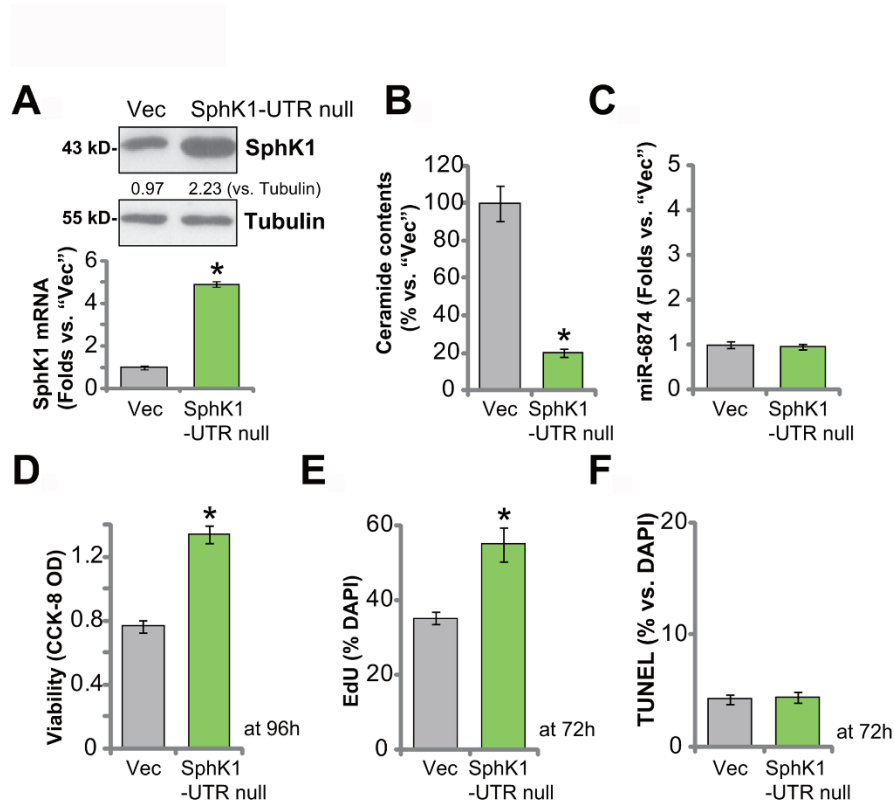


SUPPLEMENTARY FIGURE



Supplementary Figure 1. A431 cells were transduced with an UTR-null SphK1 construct ("SphK1-UTR null") or the empty vector ("Vec"). Stable cells were established with puromycin selection. Expression SphK1/2 and miR-6784 was shown (A, C). Cellular ceramide contents were tested (B); Cells were further cultured for applied time periods, cell viability, proliferation, and apoptosis were tested by CCK-8 (D), EdU staining (E), and TUNEL staining (F) assays, respectively. Data were presented as mean \pm standard deviation (SD, n=5). Experiments in this study were repeated three times with similar results obtained. * $p < 0.05$ vs. "Vec" cells.