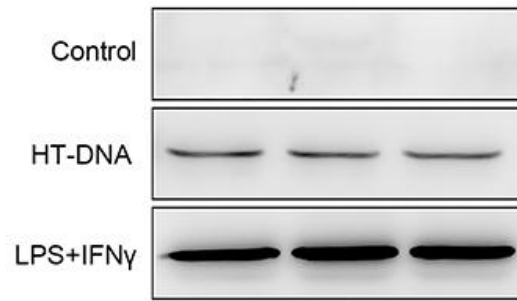


## SUPPLEMENTARY FIGURE



**Supplementary Figure 1. cGAS may be secreted extracellularly.** RAW264.7 cells were incubated for 12 h with either HT-DNA (8  $\mu$ g/mL), or LPS (10 ng/mL) plus IFN $\gamma$  (20 ng/ mL). The protein expression of cGAS in the culture supernatant was detected by western blotting (standardized at 60 $\mu$ g protein per sample). HT-DNA, deoxyribonucleic acid sodium salt from herring testes.