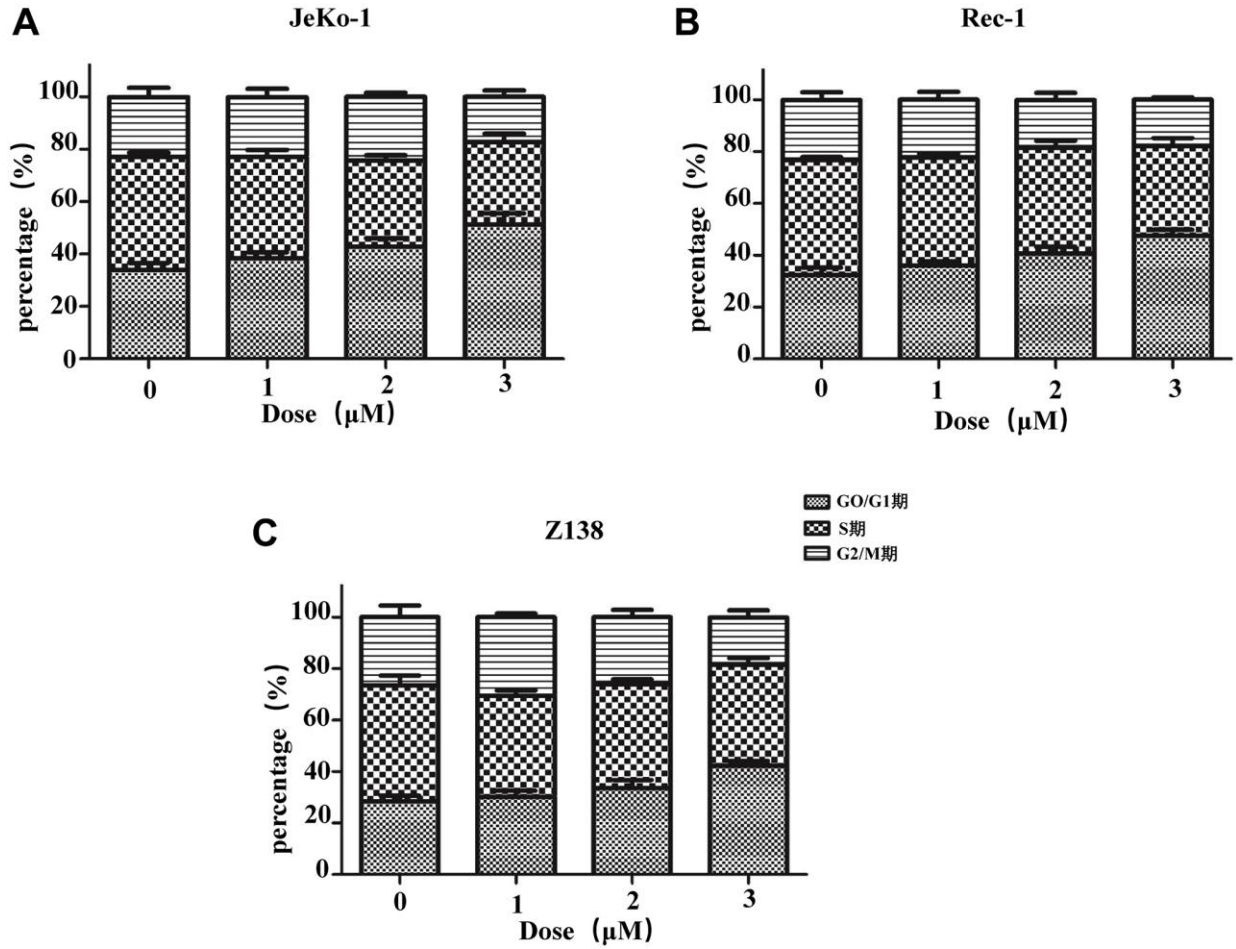
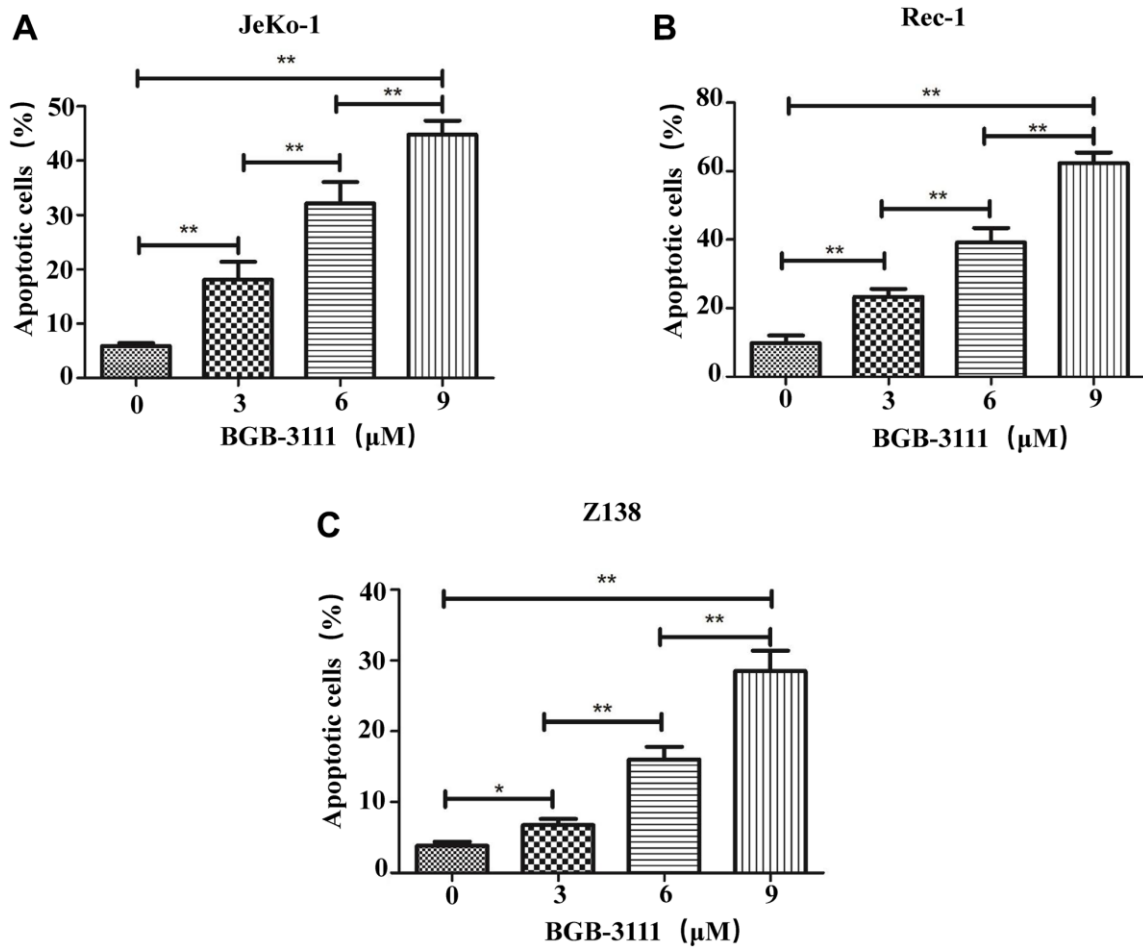


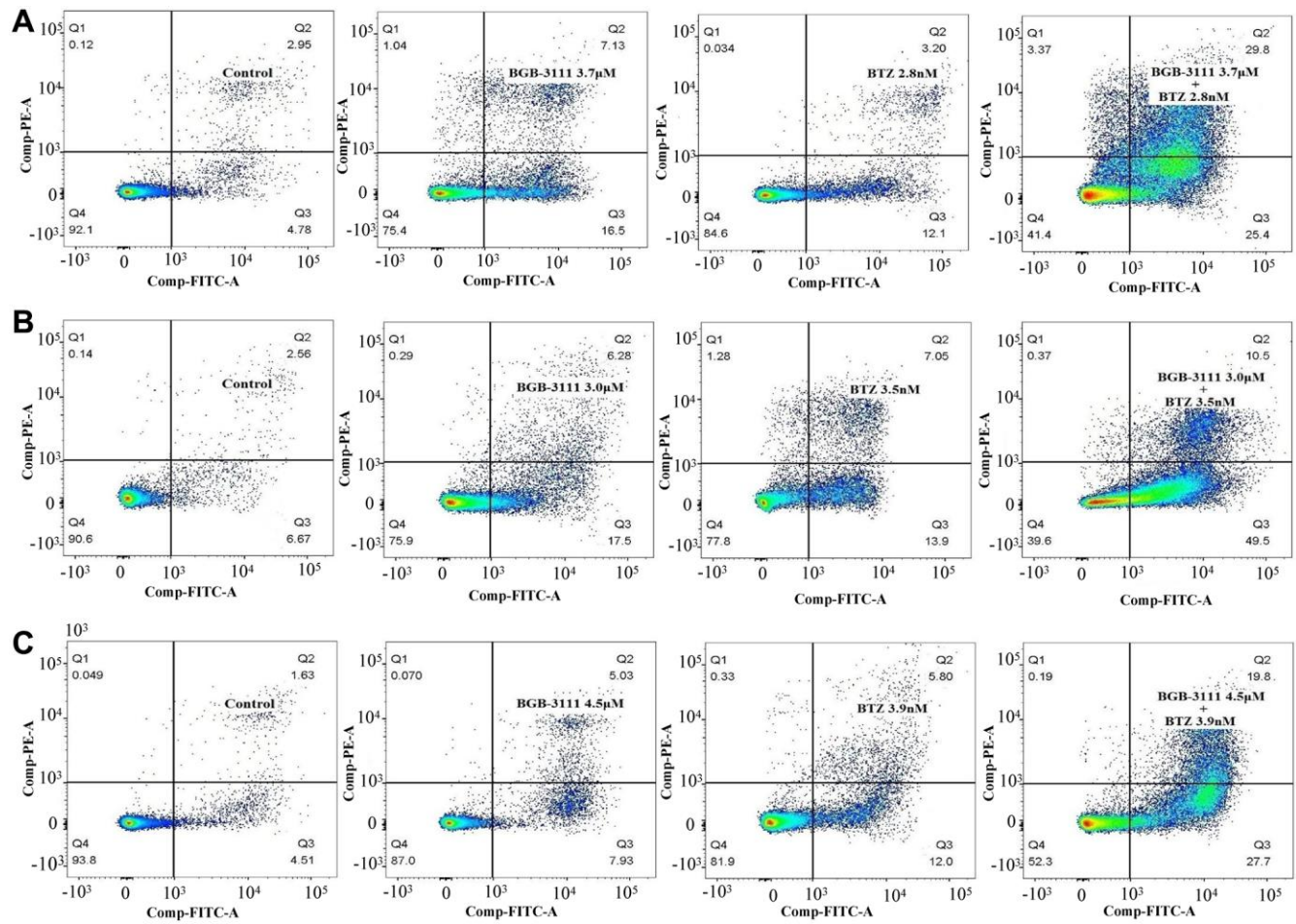
SUPPLEMENTARY FIGURES



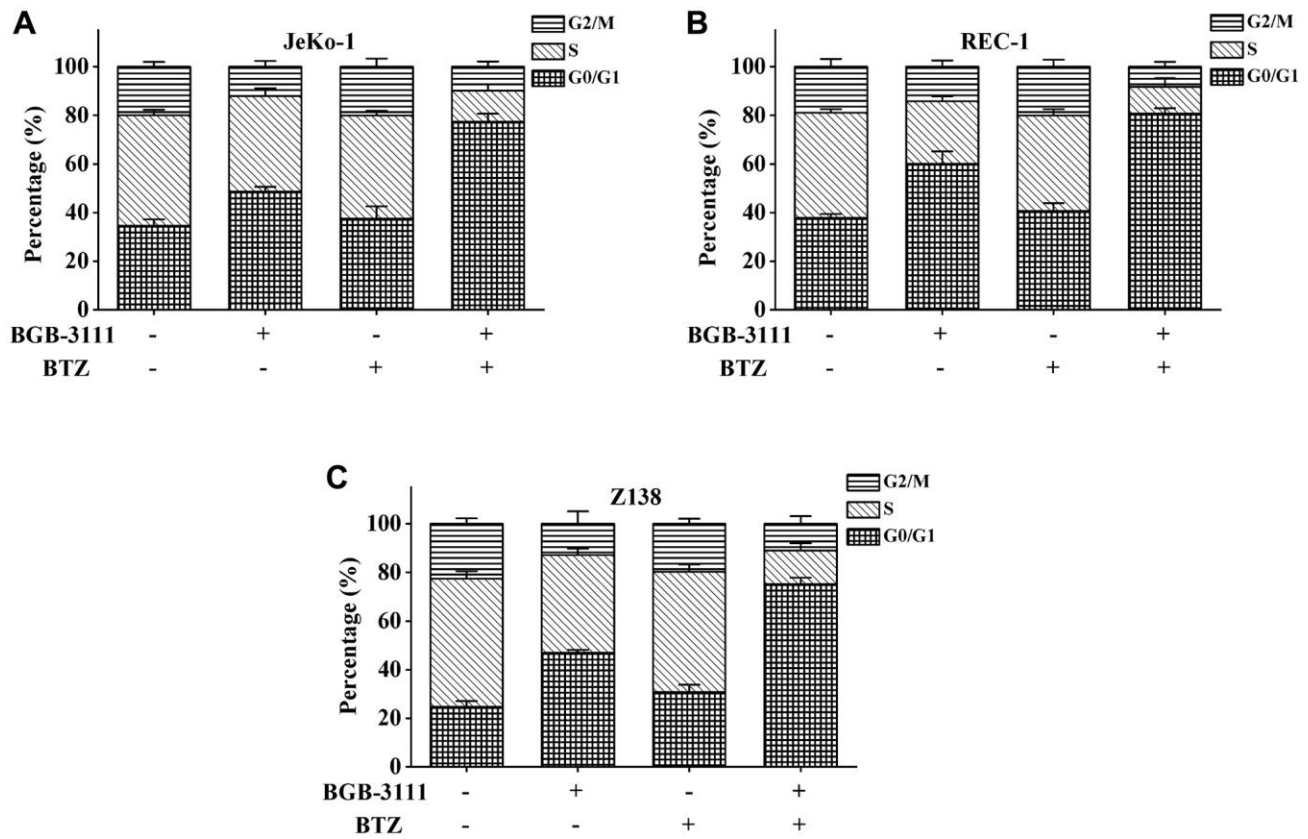
Supplementary Figure 1. Cell-cycle diagrams of Jeko-1 (A) Rec-1 (B) and Z138 (C) cells after treating with various concentrations of BGB-3111 for 48 h. The cell percentage of the cell cycle was detected by flow cytometry.



Supplementary Figure 2. Cell apoptotic distribution of Jeko-1 (A) Rec-1 (B) and Z138 (C) cells after treating with various concentrations of BGB-3111 for 48 h. Cell apoptotic rate was detected by flow cytometric analysis. * $p < 0.05$, ** $p < 0.01$.



Supplementary Figure 3. Cell apoptosis in Jeko-1 (A) Rec-1 (B) and Z138 (C) cells after treating with low-dose BGB-3111, low-dose BTZ, and their combination for 48 h. Cell apoptotic rate was detected by flow cytometry.



Supplementary Figure 4. Cell-cycle diagrams of Jeko-1 (A) Rec-1 (B) and Z138 (C) cells after treating with various concentrations of BGB-3111 and BTZ for 48 h. The cell percentage of the cell cycle was detected by flow cytometry.