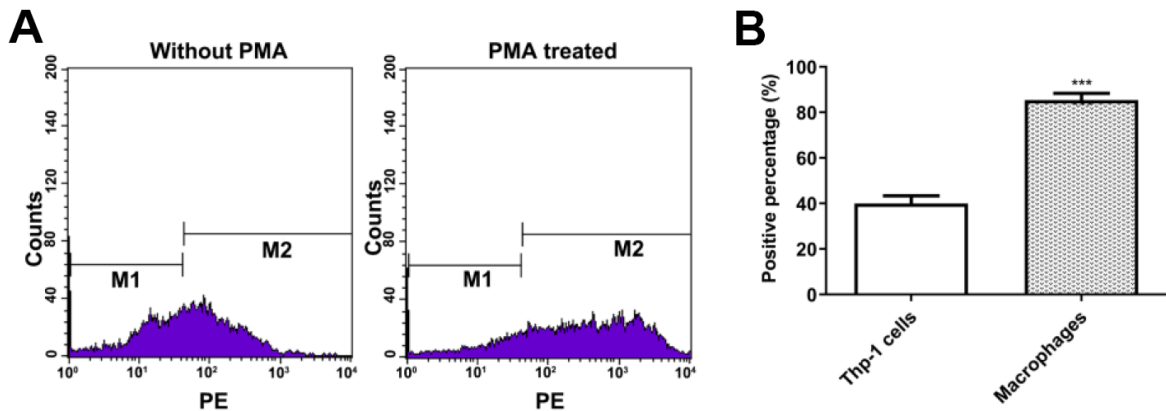
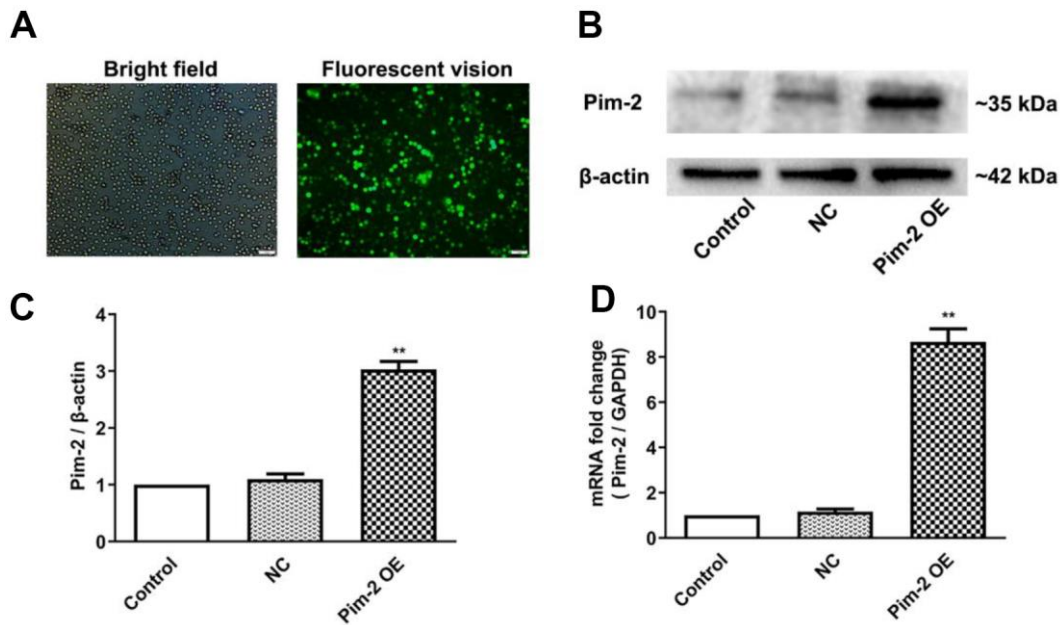


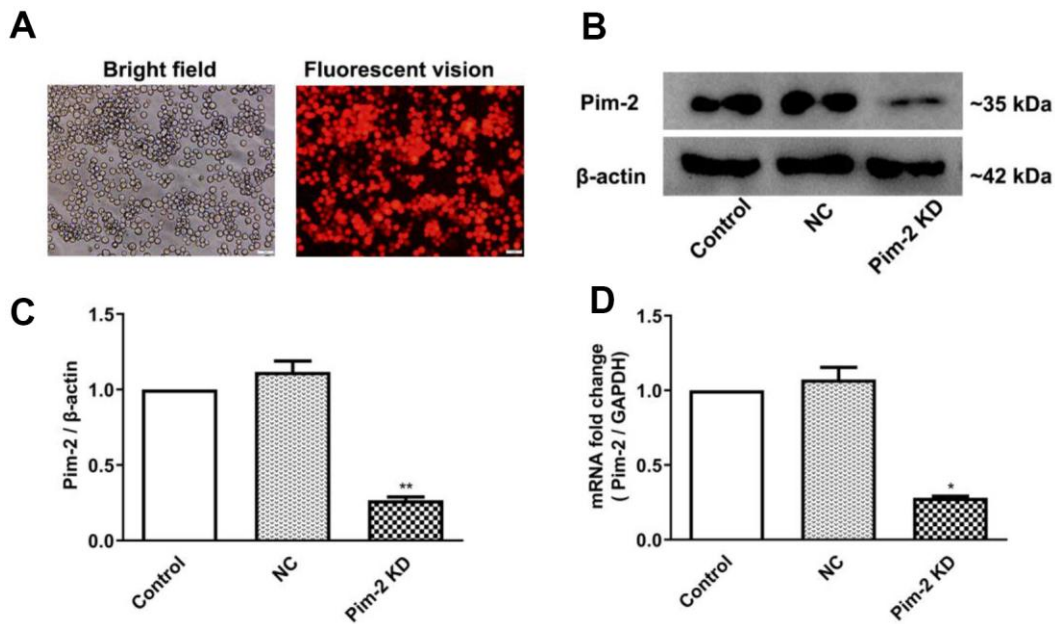
SUPPLEMENTARY FIGURES



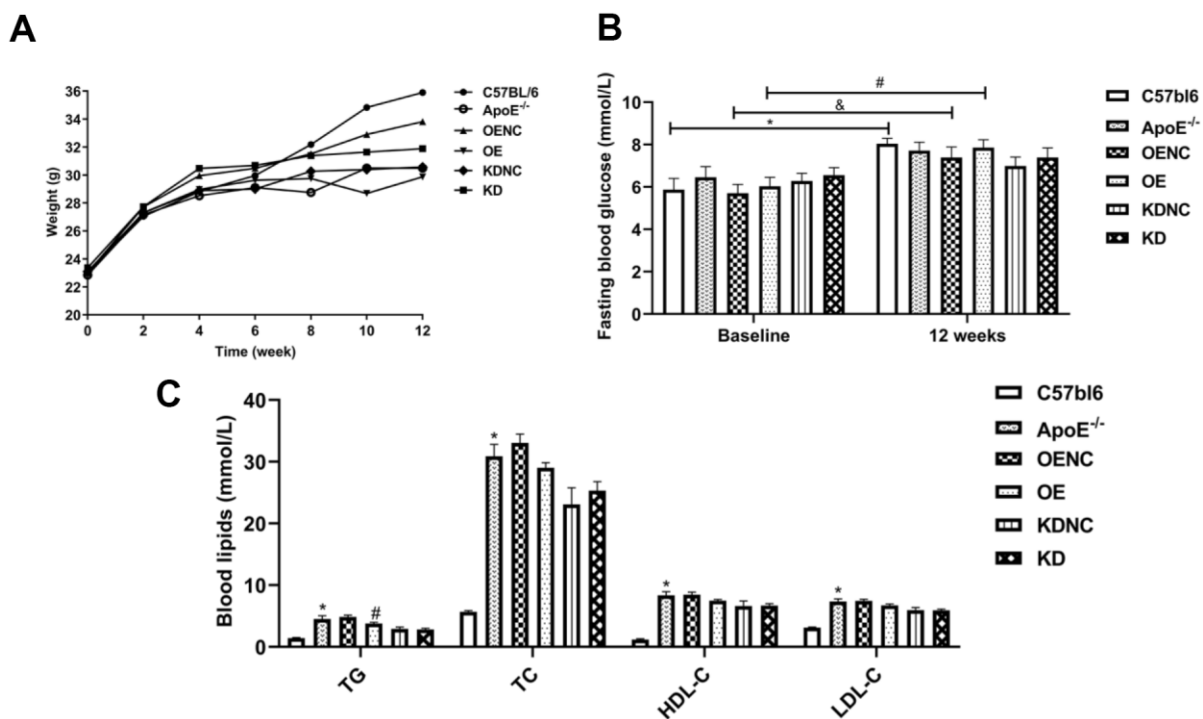
Supplementary Figure 1. Analysis of CD11b plasma membrane expression by flow cytometry in THP-1-derived macrophages. (A) Representative image of CD11b plasma membrane expression by flow cytometry in THP-1 cells or THP-1-derived macrophages. (B) Quantification analysis of CD11b plasma membrane expression (n=3 per group). Data are represented as the means ± SD of three independent experiments; ****P* < 0.001 versus THP-1 cells group.



Supplementary Figure 2. The efficiency of lentiviral transfection in THP-1 cells with Pim-2 OE. (A) Representative image of lentiviral transfection in THP-1 cells with Pim-2 OE. (B) Representative western blot analysis of Pim-2 in THP-1 cells with Pim-2 OE. (C) Corresponding densitometric analysis of blots in (B, D) mRNA expression of Pim-2 by quantitative RT-PCR in THP-1 cells with Pim-2 OE; values normalized to the house-keeping gene, GAPDH. Data are represented as the means ± SD of three independent experiments; ***P* < 0.01 versus NC group.



Supplementary Figure 3. The efficiency of lentiviral transfection in THP-1 cells with Pim-2 KD0. (A) Representative image of lentiviral transfection in THP-1 cells with Pim-2 KD. (B) Representative western blot analysis of Pim-2 in THP-1 cells with Pim-2 KD. (C) Corresponding densitometric analysis of blots in (B, D) mRNA expression of Pim-2 by quantitative RT-PCR in THP-1 cells with Pim-2 KD; values normalized to the house-keeping gene, GAPDH. Data are represented as the means \pm SD of three independent experiments; * $P < 0.05$, ** $P < 0.01$ versus NC group.



Supplementary Figure 4. The body weight, fasting blood glucose and blood lipids of mice. (A) Body weight (g) of mice was recorded at the indicated times (n=12 per group). (B) Fasting blood glucose (mmol/L) was determined at baseline and 20-week-old (n=10 per group); * $P < 0.05$, [&] $P < 0.05$, [#] $P < 0.05$ versus the corresponding baseline levels of fasting blood glucose. (C) The levels of blood lipids at 20-week-old (n=10 per group); * $P < 0.05$ versus C57bl6 group; [#] $P < 0.05$ versus OENC group.