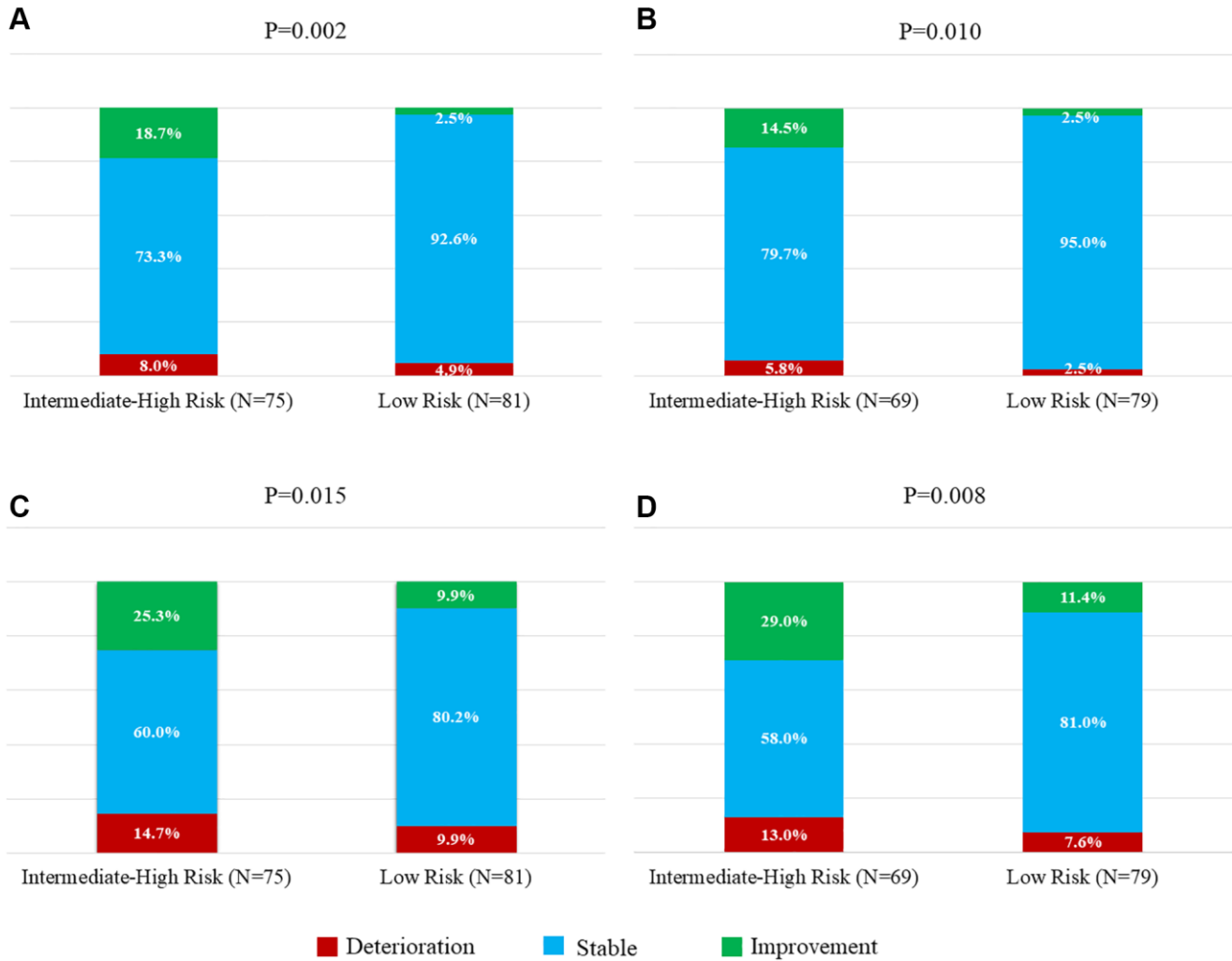


SUPPLEMENTARY FIGURE



Supplementary Figure 1. Percentage of patients with changes in NIHSS and Barthel index. Deterioration or improvement was defined as score increase or decrease in the NIHSS. (A) Baseline to 3 months. (B) Baseline to 1 year. Deterioration or improvement was defined as score decrease or increase in the Barthel index. (C) Baseline to 3 months. (D) Baseline to 1 year. Abbreviation: NIHSS: National Institutes of Health Stroke Scale.