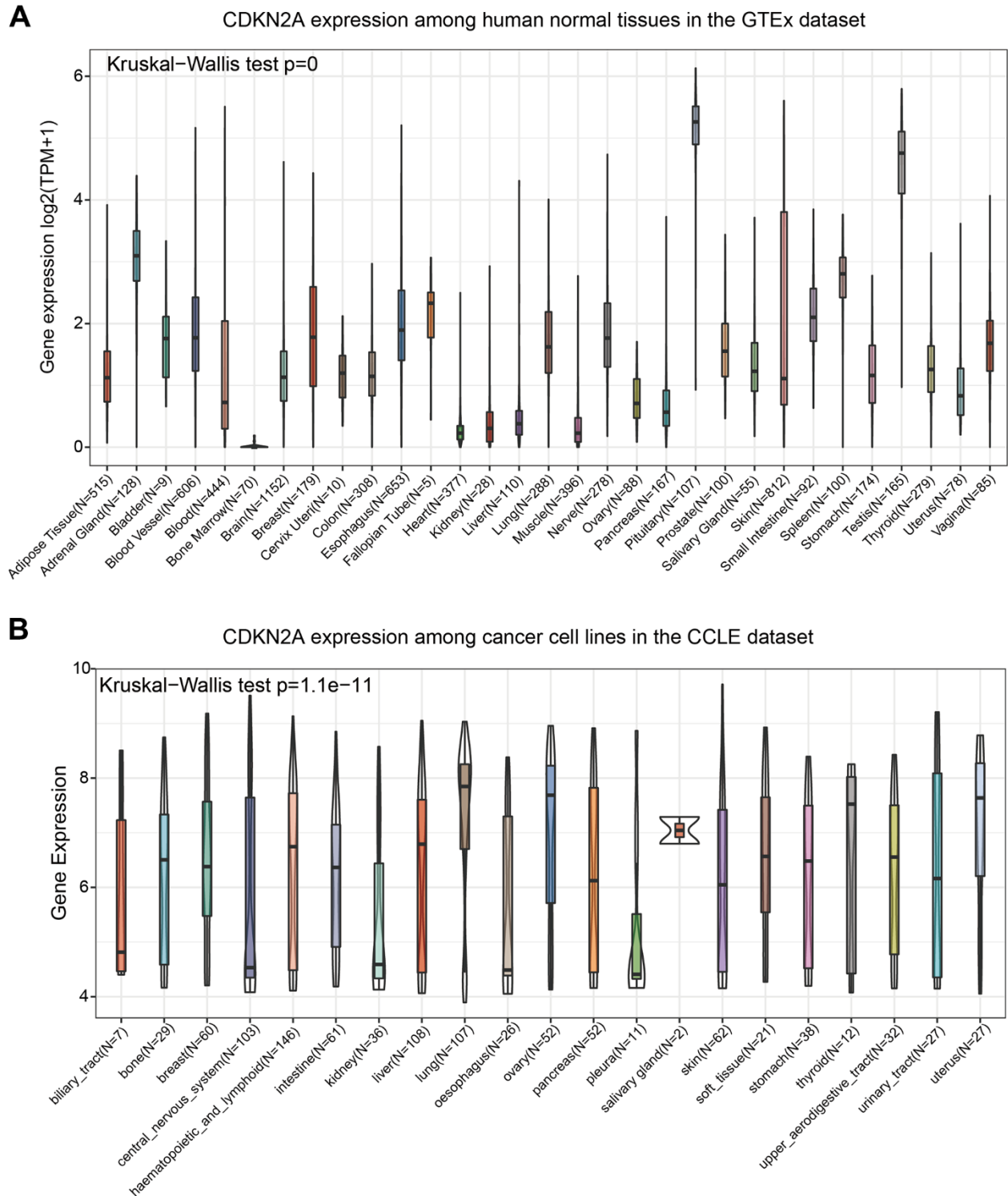
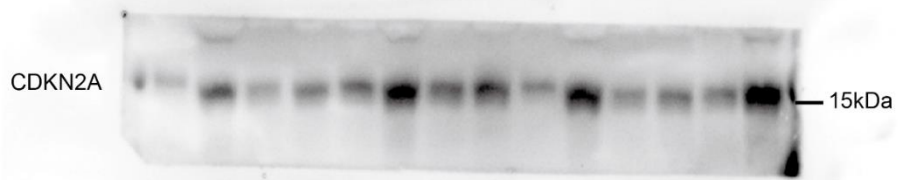


SUPPLEMENTARY FIGURES

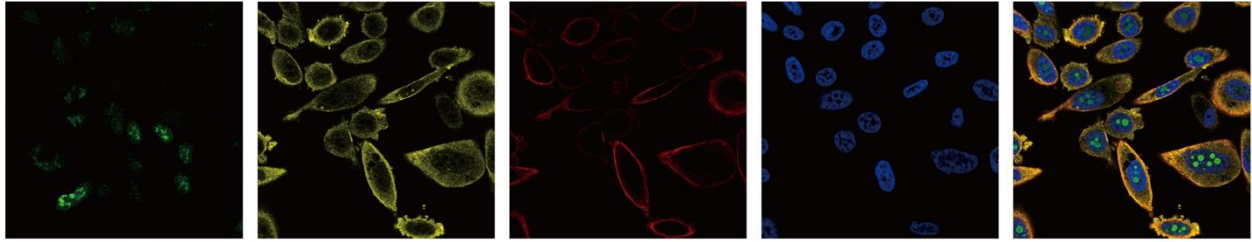


Supplementary Figure 1. Basic expression levels of CDKN2A across human normal tissues and cancer cells. (A) CDKN2A expression among human normal tissues in the GTEx dataset. **(B)** CDKN2A expression among cancer cell lines in the CCLE dataset.

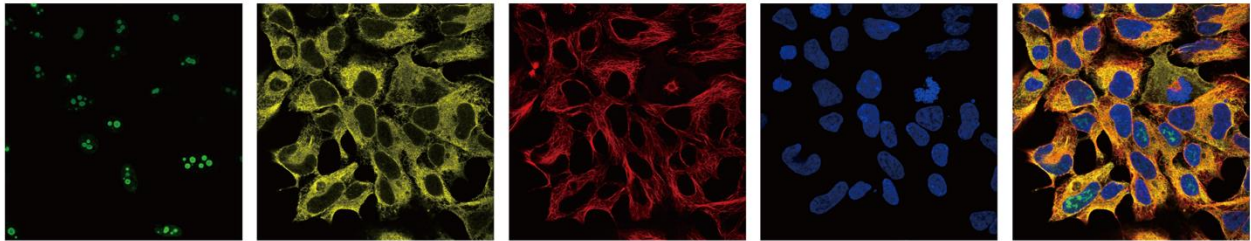


Supplementary Figure 2. Original Western blot bands of CDKN2A and GAPDH in 7 pairs of LGG samples.

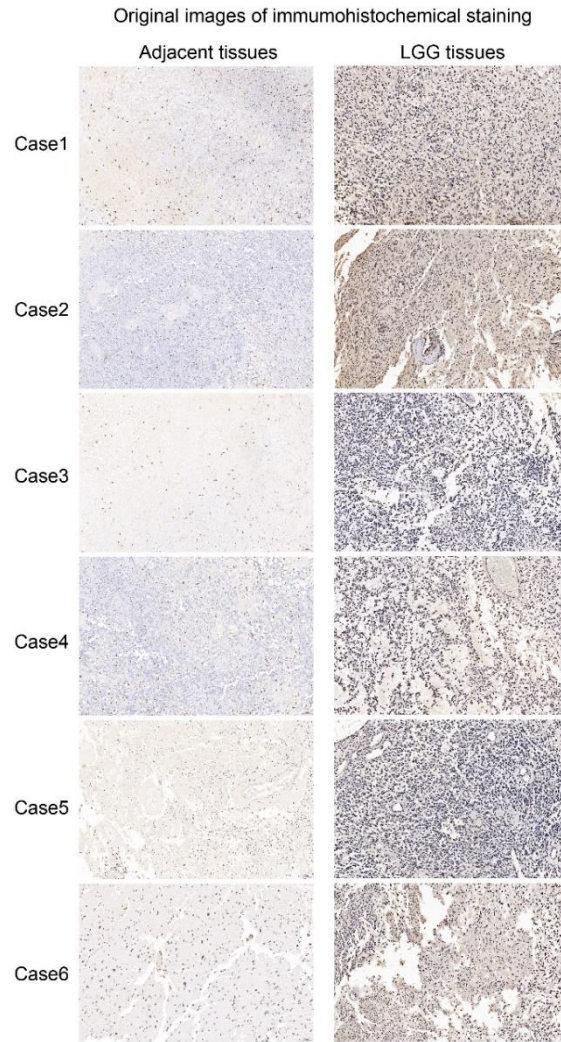
Original images of PC-3 cells downloading from the HPA datasets



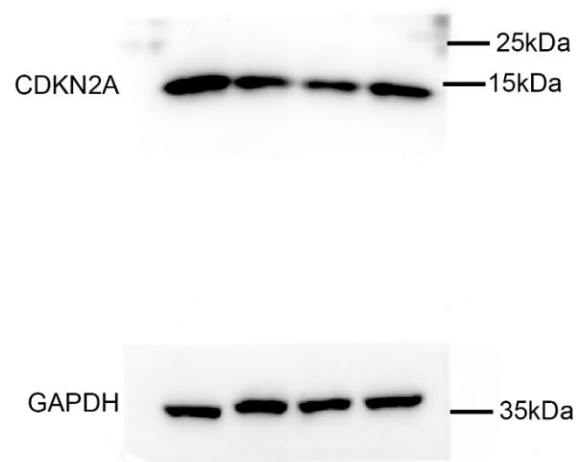
Original images of HEK-293 cells downloading from the HPA datasets



Supplementary Figure 3. Original images of immunofluorescent staining of CDKN2A in PC-3 and HEK-293 cells downloaded from the HPA dataset.



Supplementary Figure 5. Original images of immunohistochemical staining of CDKN2A in clinical LGG samples.



Supplementary Figure 6. Original Western blot bands of CDKN2A and GAPDH in si-CDKN2A transfected SW1088 cells.