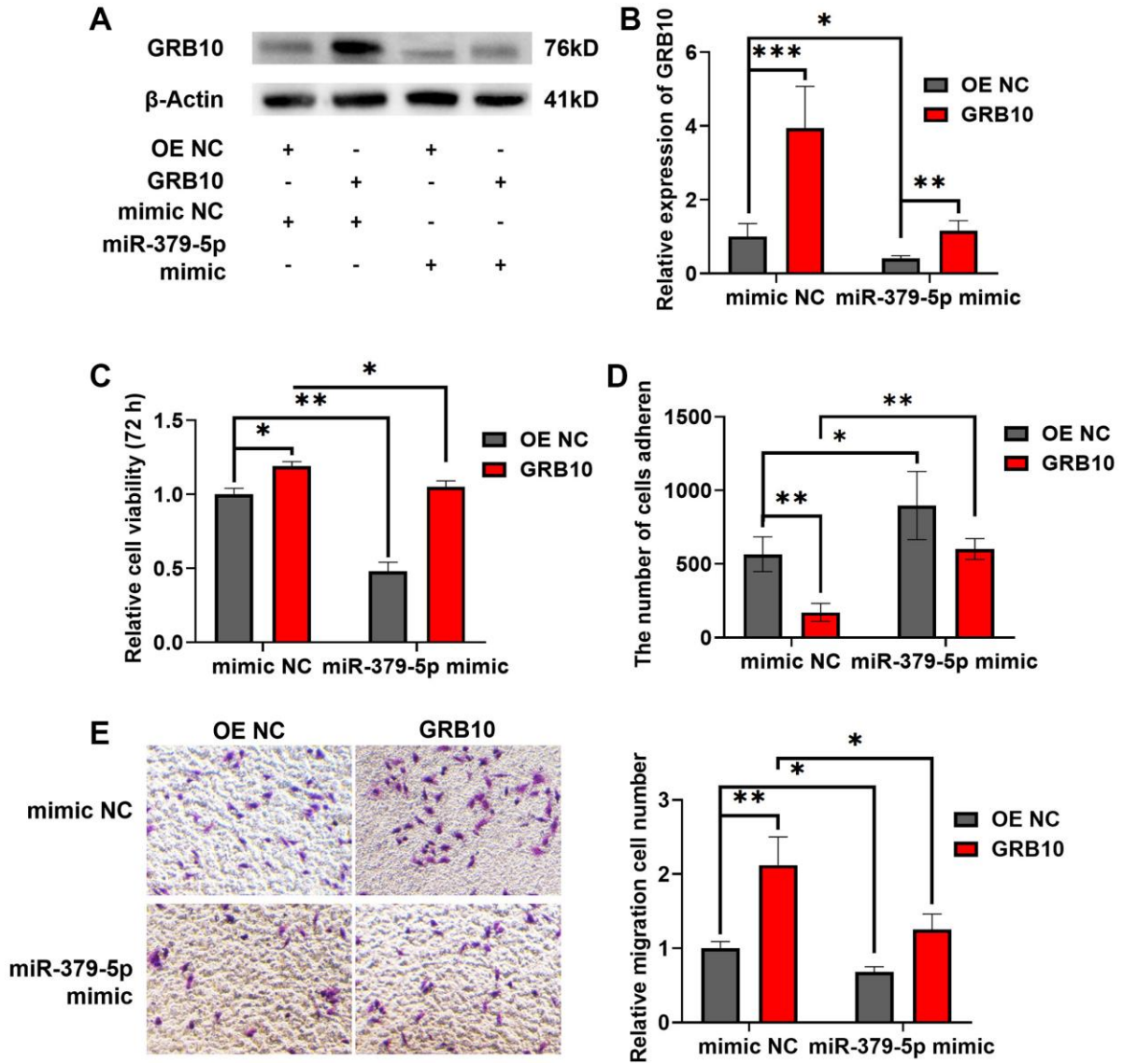


SUPPLEMENTARY FIGURE



**Supplementary Figure 1. MiR-379-5p rescues increased proliferation migration of gastric cancer cells caused by GRB10.** (A) The expression of GRB10 in gastric cancer cell lines was detected by Western Blot. (B) The relative grayscale from WB experiments. (C) Cell proliferation was determined by the CCK-8 assay. (D) Effects of GRB10 on cell adhesion ability. (E) Cell migratory ability was detected by Transwell migration assay.