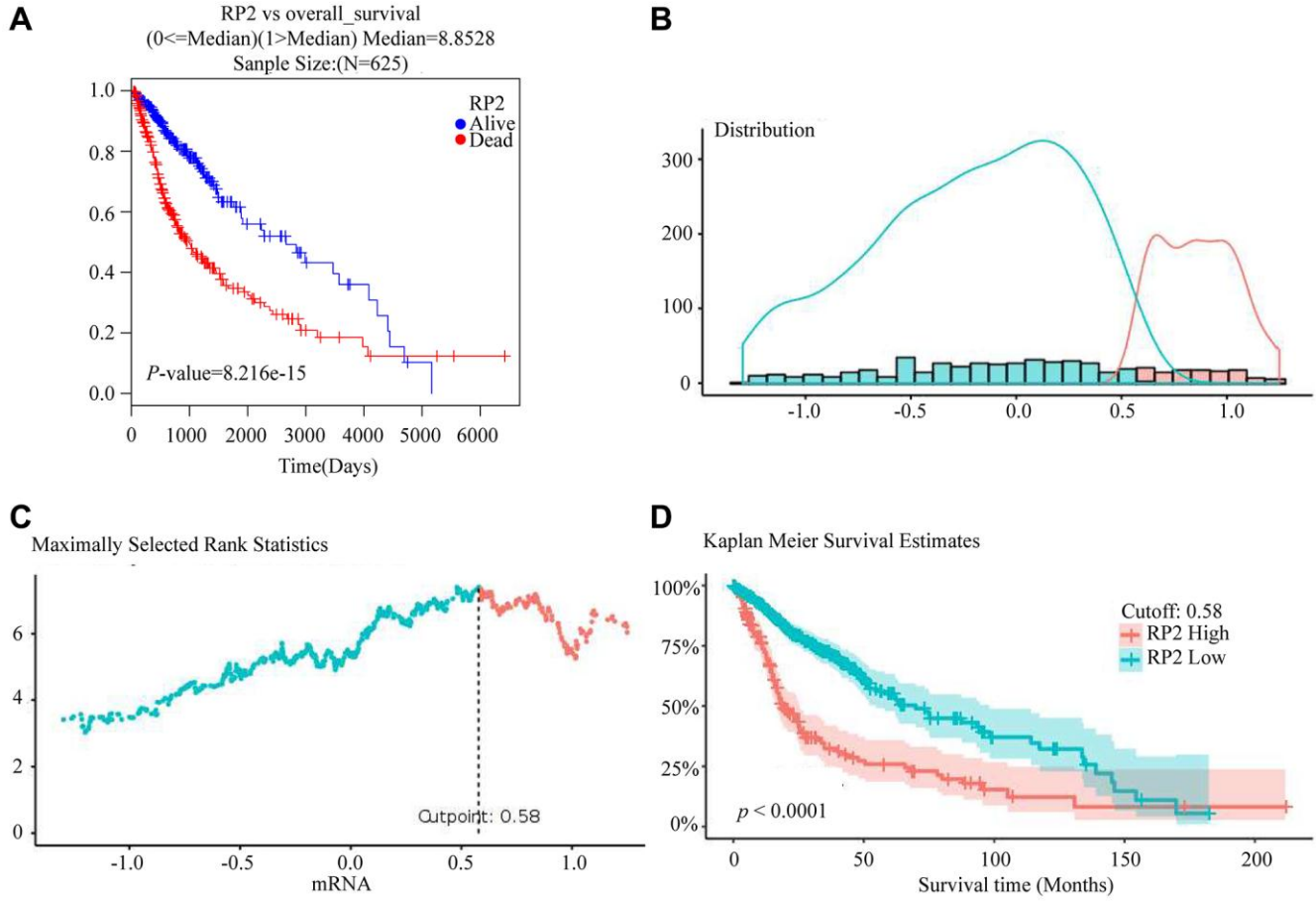
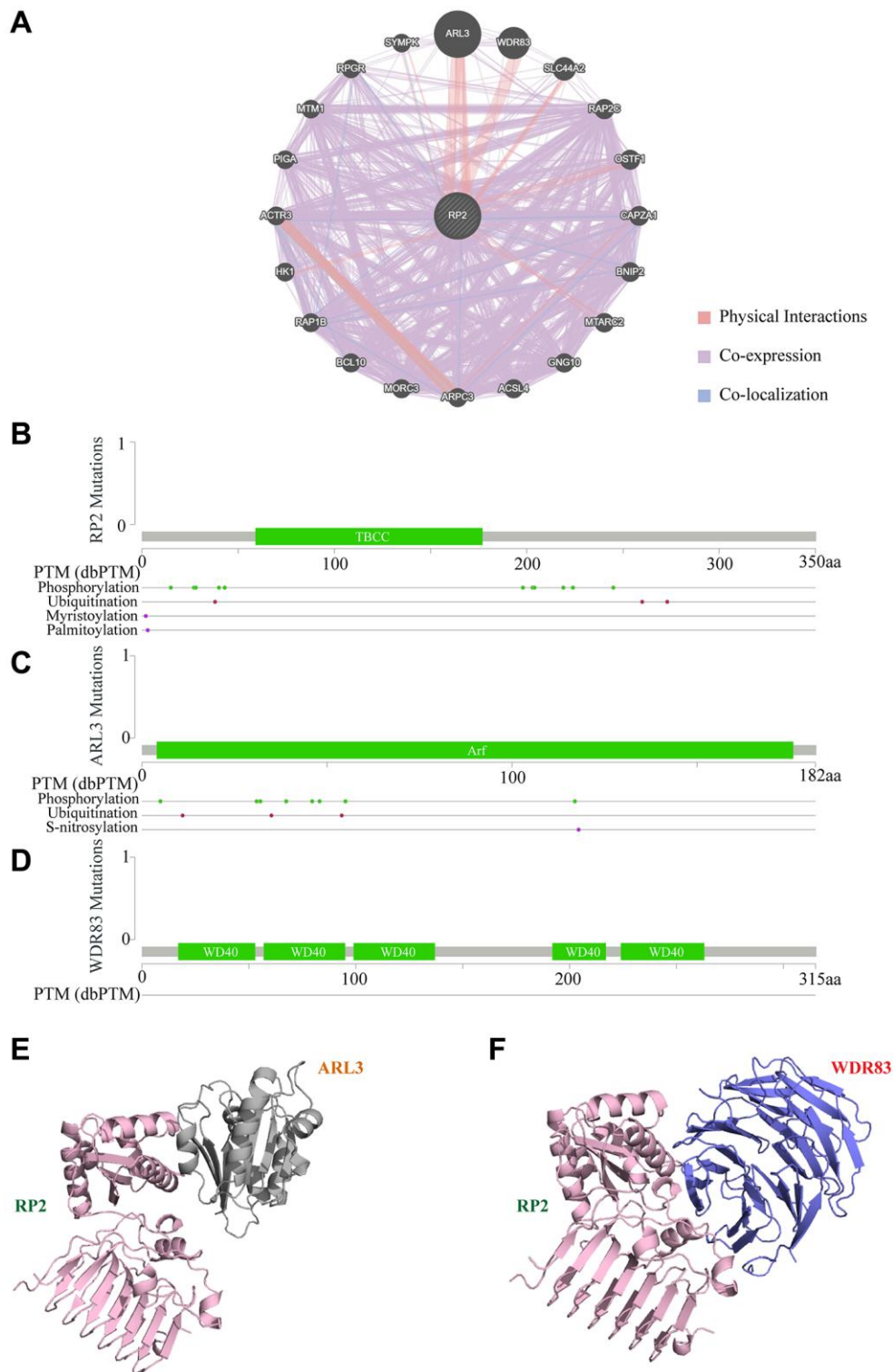


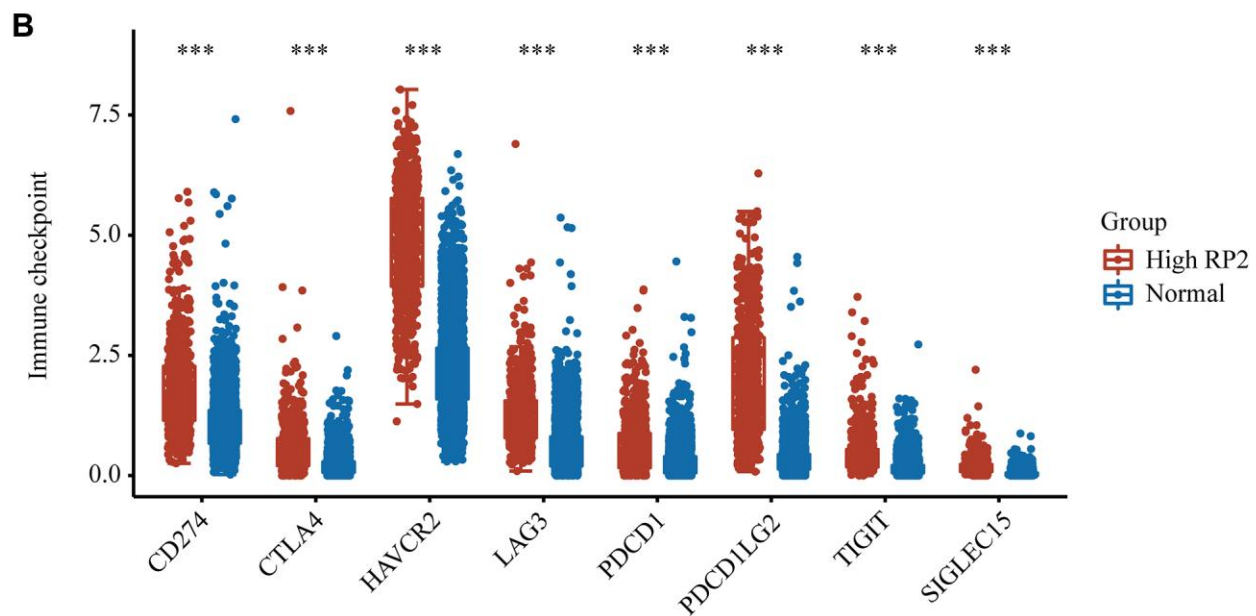
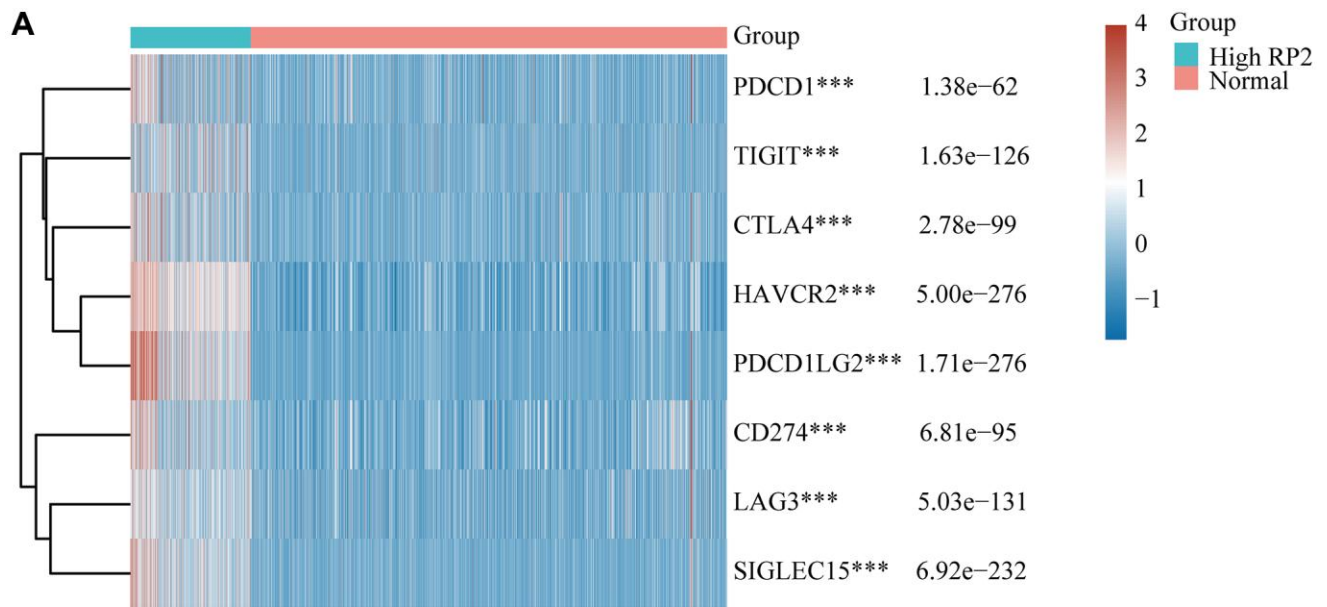
SUPPLEMENTARY FIGURES



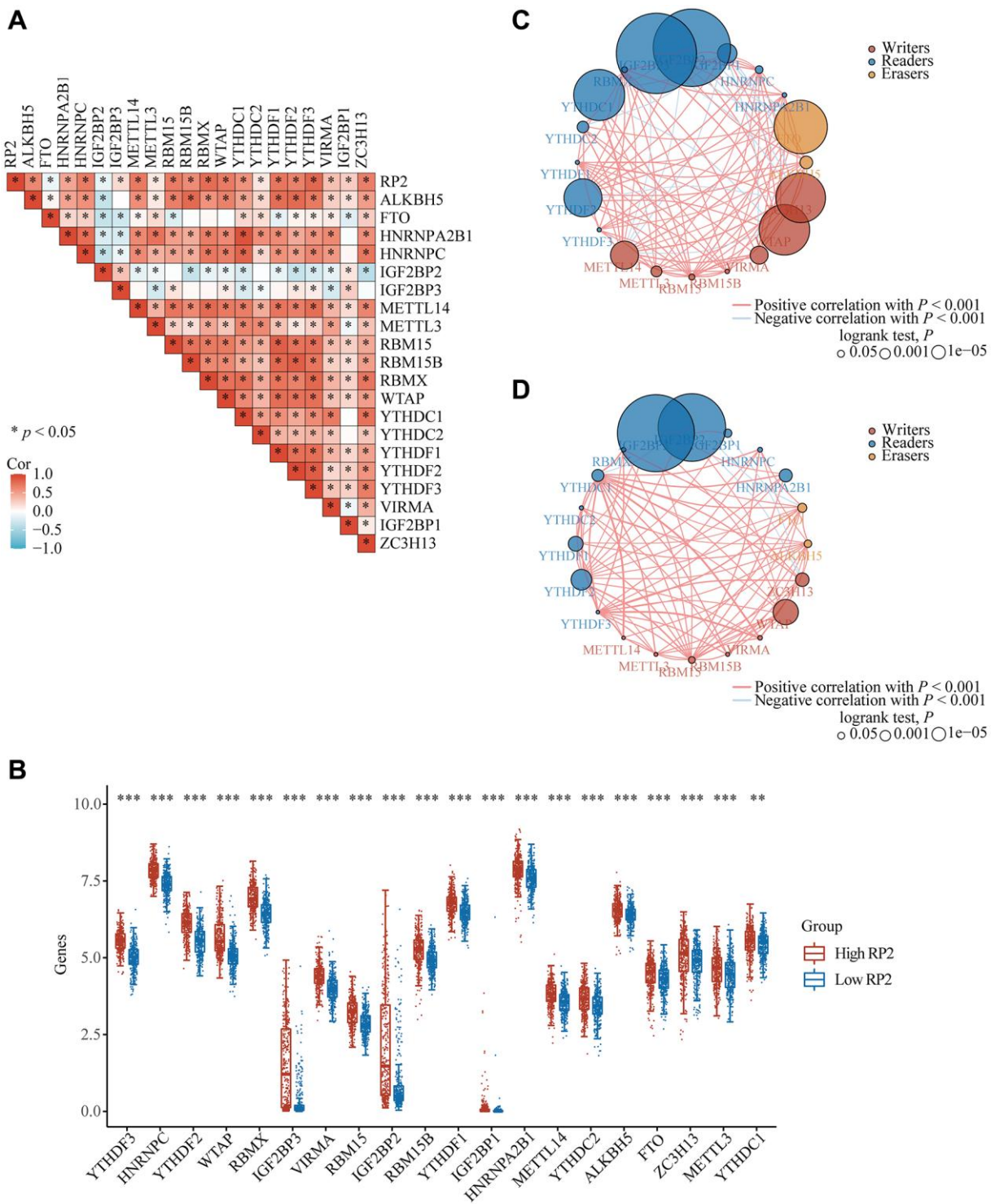
Supplementary Figure 1. Survival analysis validation from the other web sites (A) Overall survival was also examined using LinkedOmics. (B–D) Survival analysis examined via GlioVis.



Supplementary Figure 2. Structural and physical interactions of RP2. (A) Physical interacting proteins of RP2. (B–D) Secondary structure and mutation sites of RP2, ARL3 and WDR83. (E, F) Structure diagram of physical interaction between RP2 and ARL3 and RP2 and WDR83.



Supplementary Figure 3. Analysis of the correlation of some classical immune checkpoints and RP2 in expression. (A) Heatmap, (B) box diagram.



Supplementary Figure 4. (A) Heatmap of the correlation between RP2 and m⁶A-related genes in glioma. (B) The differential expression of m⁶A related genes between high and low RP2 expression groups in glioma samples. (C, D) Effects of m⁶A regulators on prognosis of glioma with different expression of RP2.