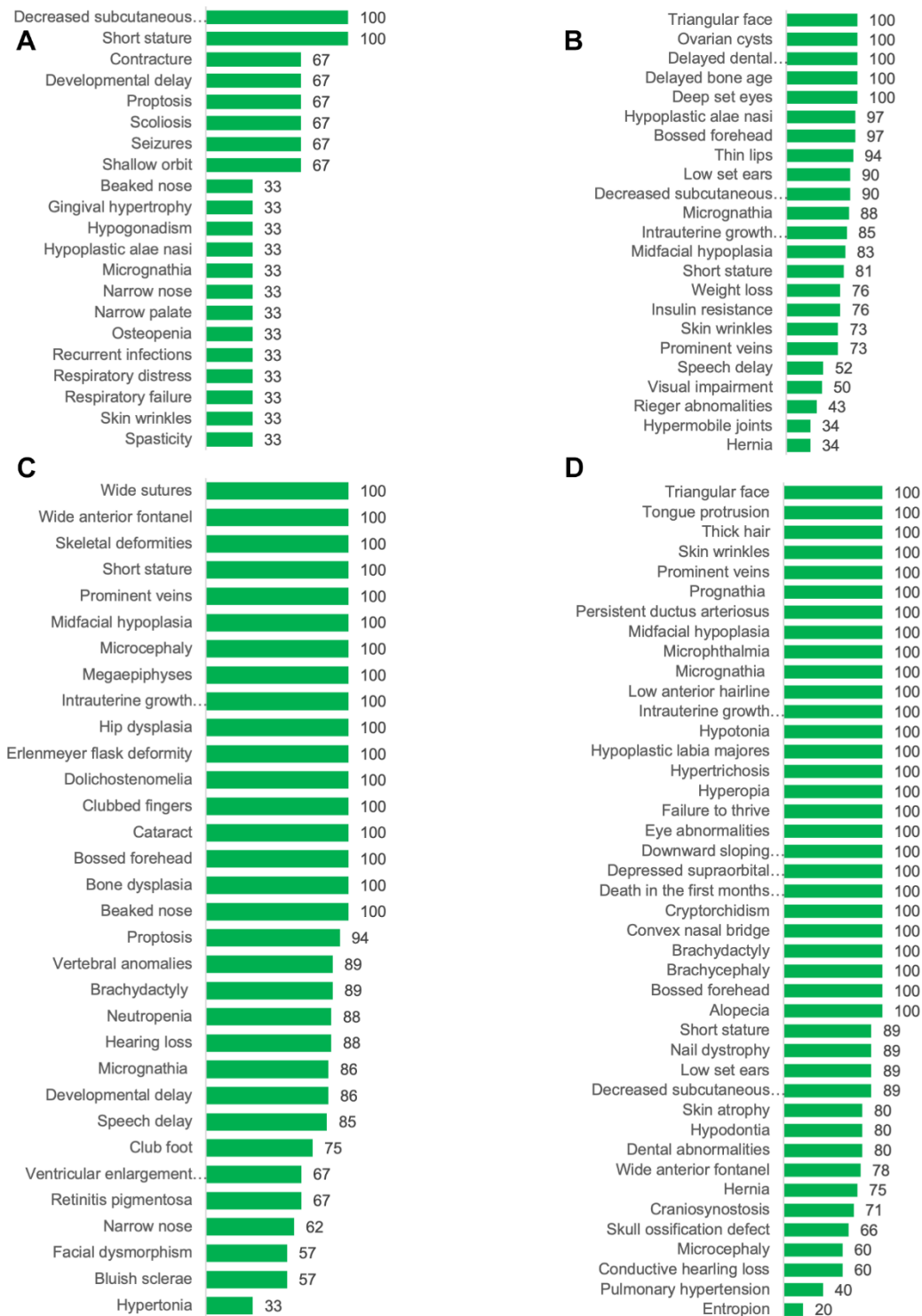
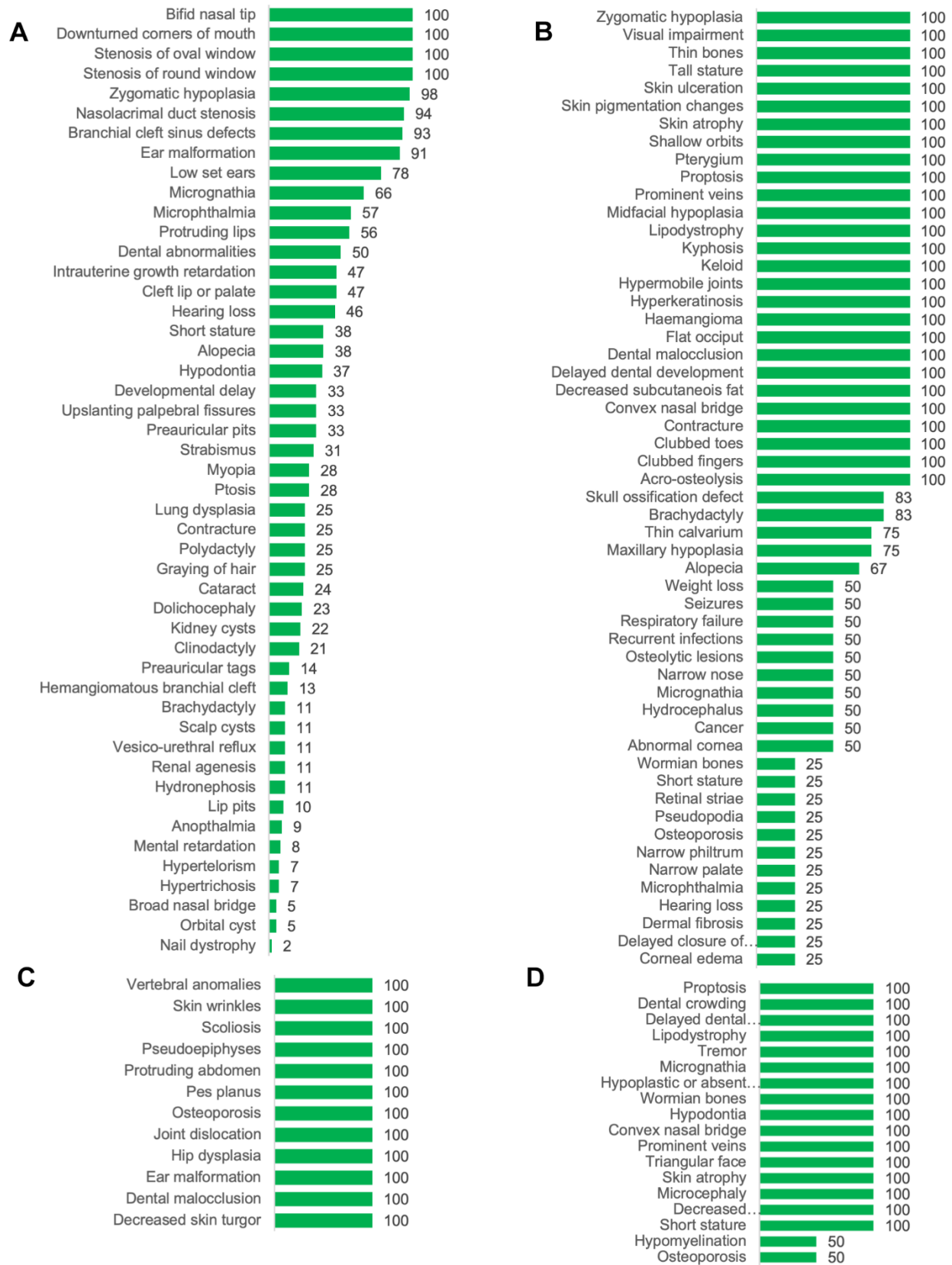


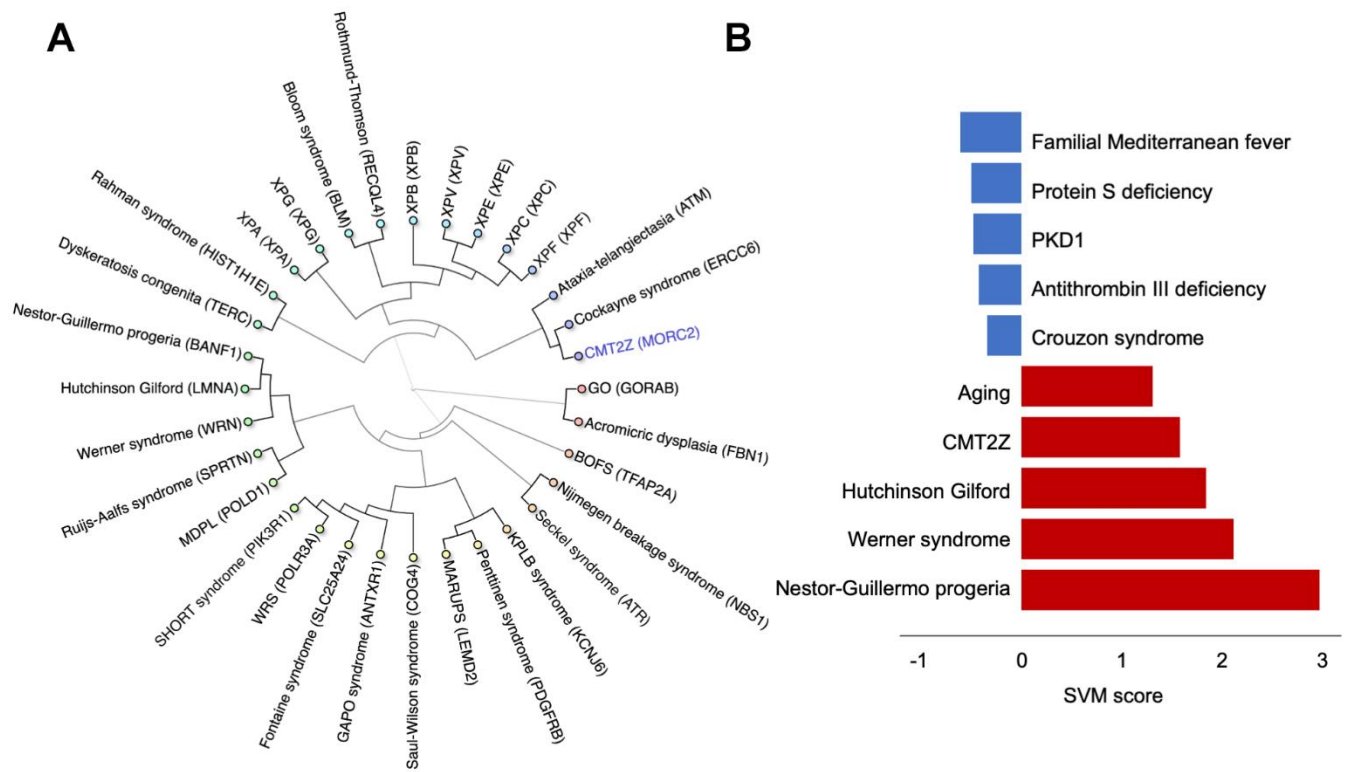
SUPPLEMENTARY FIGURES



Supplementary Figure 1. Identification and visualization of phenotypes in identified progeroid syndromes. Bar charts showing the prevalence (%) of phenotypes for (A) Keppen-Lubinsky syndrome (KPLB), (B) SHORT syndrome, (C) Saul-Wilson syndrome and (D) Fontaine syndrome.



Supplementary Figure 2. Identification and visualization of phenotypes in identified progeroid syndromes. Bar charts showing the prevalence (%) of phenotypes for (A) Braciooculofacial syndrome (BOFS), (B) Penttinen syndrome, (C) Geroderma osteodysplasticum (GO), (D) Marbach-Rustad progeroid syndrome (MARUPS).



Supplementary Figure 3. Charcot-Marie-Tooth type 2Z (CMT2Z) may be a premature aging disorder. (A) Hierarchical clustering of premature aging diseases and CMT2Z. (B) Progeria SVM score of some premature aging diseases and CMT2Z.