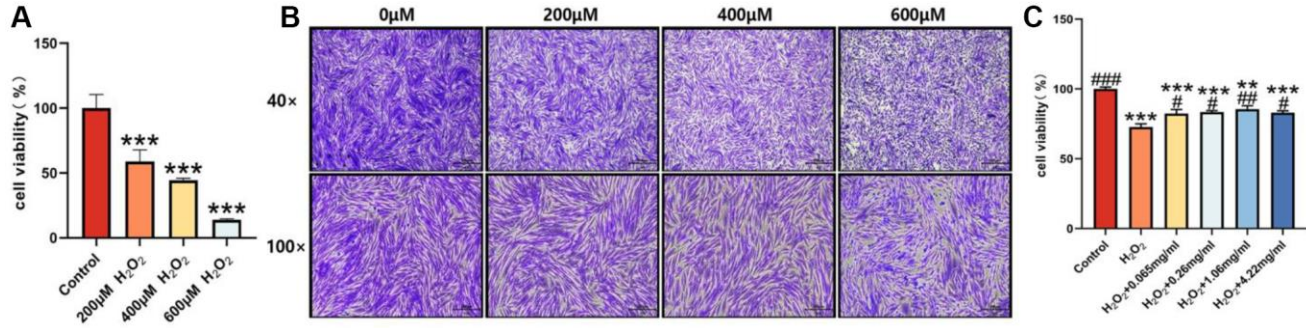


SUPPLEMENTARY FIGURE



Supplementary Figure 1. The concentration of H₂O₂ and NTZF treated KGN cells was screened. (A) CCK-8 was used to detect the effect of different H₂O₂ concentrations on the cell viability of KGN cells. **(B)** Crystal violet staining was used to detect the effect of different H₂O₂ concentrations on the morphology of KGN cells. **(C)** CCK-8 was used to detect the effect of different NTZF concentrations on the cell viability of KGN cells. (**p* < 0.05, ***p* < 0.01, ****p* < 0.001, versus control group, *n* = 3; #*p* < 0.05, ###*p* < 0.01, ###*p* < 0.001, versus H₂O₂ group, *n* = 3).