

SUPPLEMENTARY DATA

Please browse the full text version of this manuscript to see Supplementary Tables 1-3.

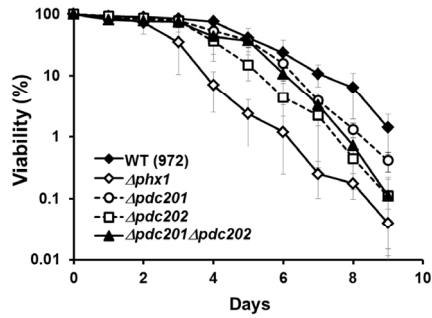


Figure S1. Effect of double mutations of *pdc201* and *pdc202* on long-term survival. Survival of the $\Delta pdc201\Delta pdc202$ double mutant (JY11) was monitored along with those of the wild type (972), $\Delta phx1$ (JY01), $\Delta pdc201$ (JY02), and $\Delta pdc202$ (JY03), as described in Fig. 3. Average values with standard deviations from six independent experiments were presented for the double mutant. Values from three independent experiments were presented for the wild type and single mutants.