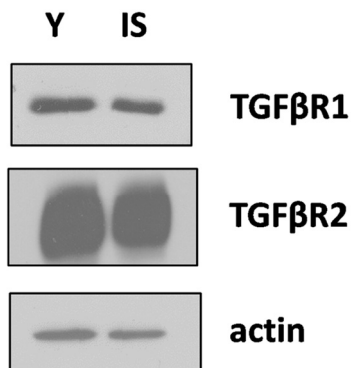


SUPPLEMENTAL DATA



Supplemental Figure 1. Expression levels of TGF- β receptors in human breast stromal fibroblasts. Cell lysates from early passage (young: Y) and senescent due to irradiation (IS) cells were analyzed by western blot for the expression of TGF- β receptor type I (TGF β R1) and type II (TGF β R2). Actin served as reference protein. One representative experiment out of two similar ones is depicted.