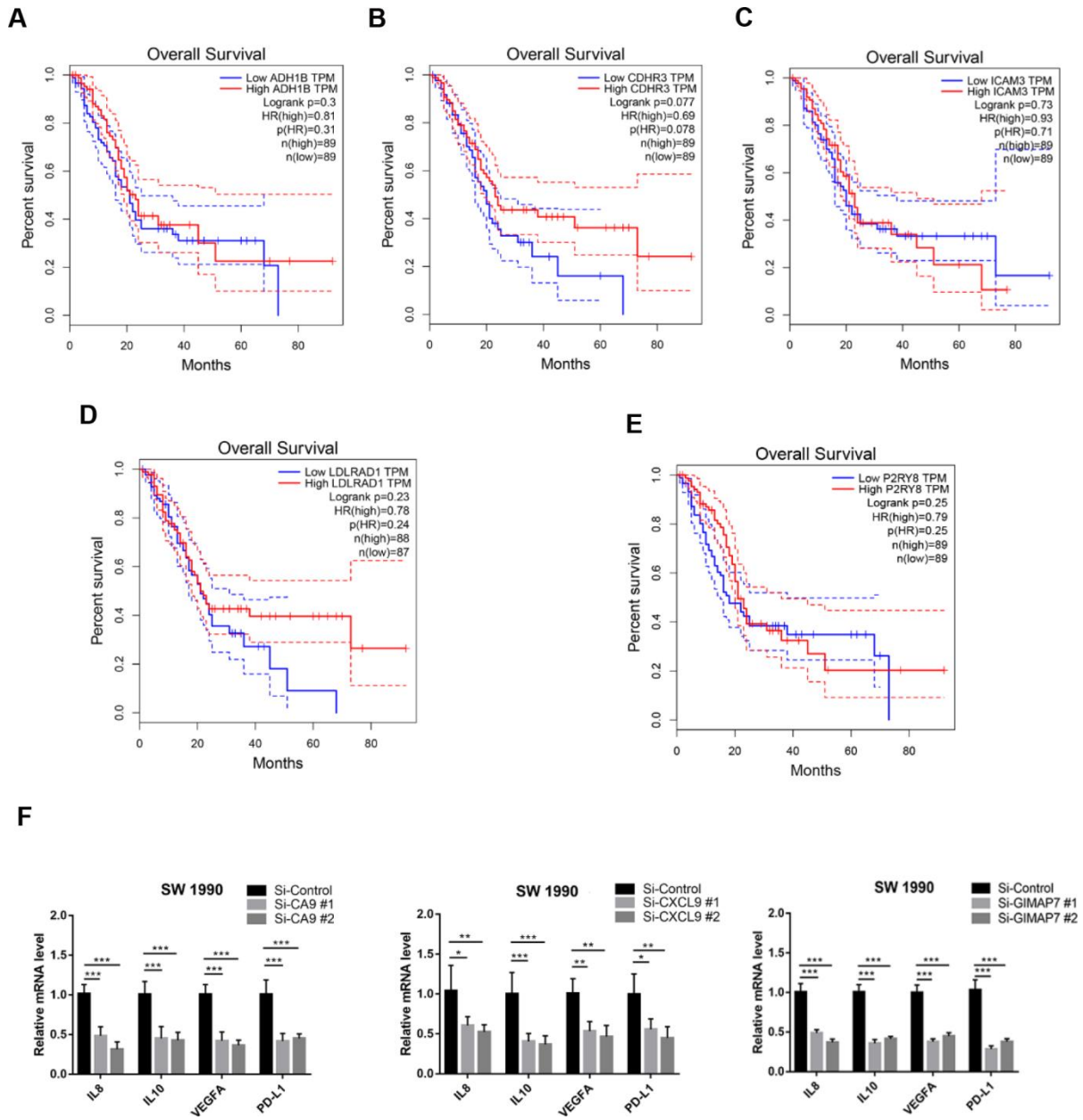
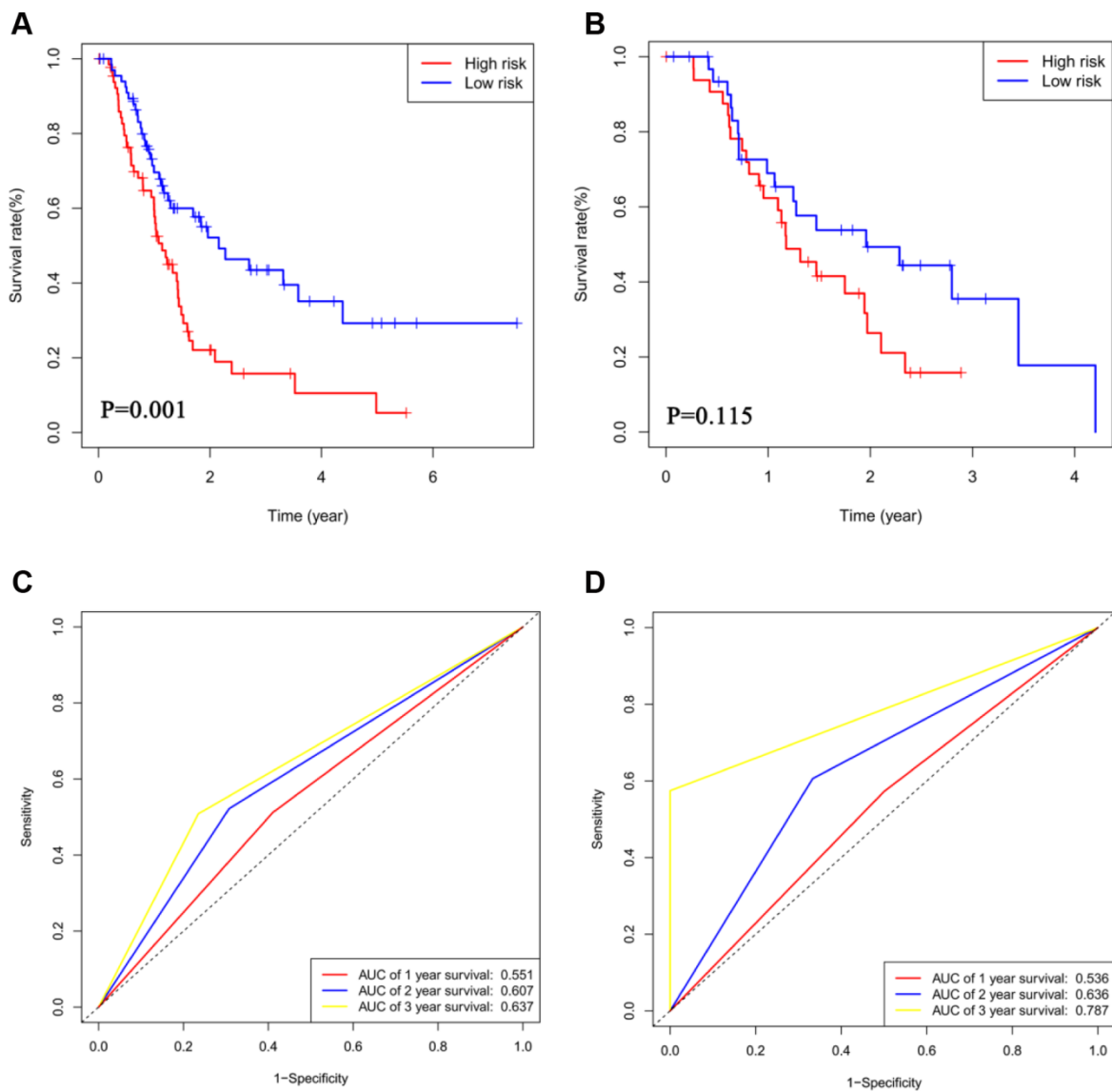


**SUPPLEMENTARY FIGURES**



**Supplementary Figure 1.** (A–E) The overall survival (OS) of the patients with PAAD were computed with the GEPIA web tool. (F) SW 1990 cells transfected with indicated constructs. 48 h post-transfection, cells were harvested for RT-qPCR analysis. The data shown are the mean values ± SD from three replicates. \*, P < 0.05; \*\*, P < 0.01; \*\*\*, P < 0.001.



**Supplementary Figure 2.** (A and B) The Kaplan-Meier curves for DFS analysis in the training set (A) and the validation set (B). (C and D) Time-dependent ROC analysis for DFS analysis at 1, 2 and 3 years in the training set (C) and the validation set (D).