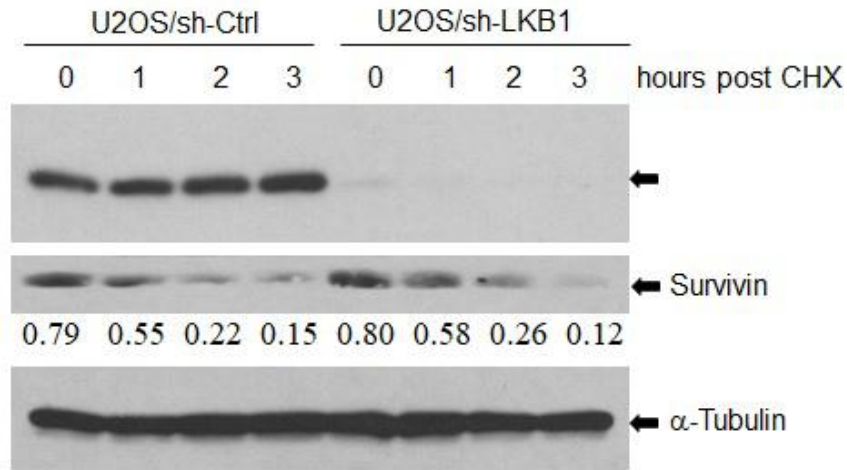
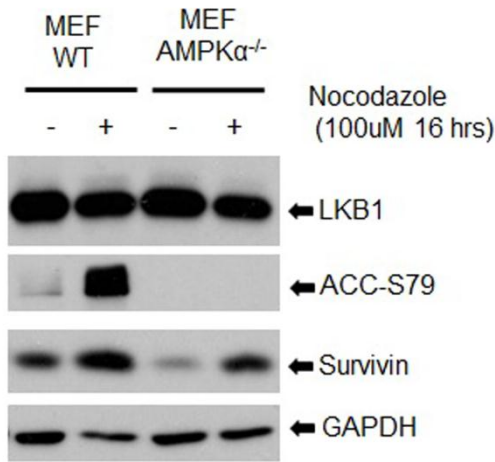


SUPPLEMENTARY FIGURES

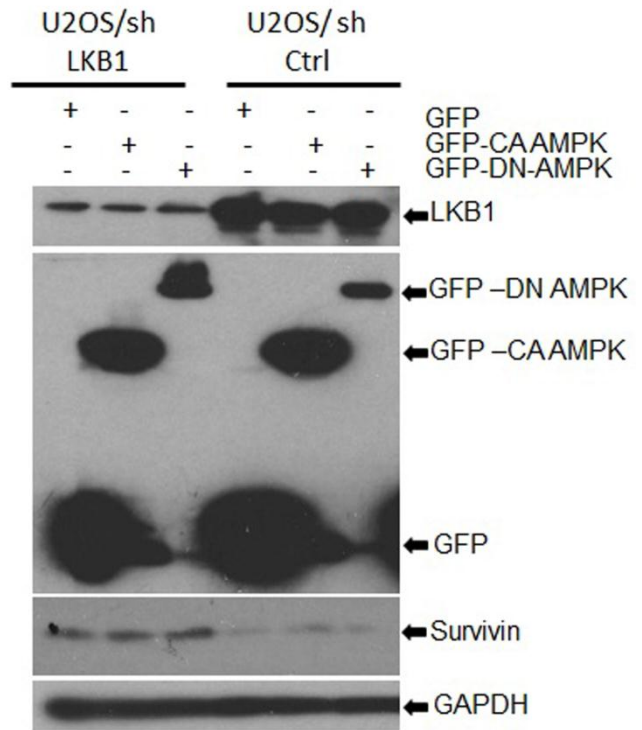


Supplementary Figure 1. Western blotting results showing that LKB1 does not influence survivin protein stability after CHX addition (20 µg/mL).

A



B



Supplementary Figure 2. LKB1 suppresses survivin expression independently of AMPK. (A) Survivin expression was detected using western blotting in WT and AMPKα^{-/-} MEFs cells exposed to nocodazole or control vehicle. (B) Transfection of GFP-DN-AMPK and GFP-KA-AMPK into U2OS cells and survivin detection by western blotting. Thirty micrograms of protein per lane were loaded. GAPDH served as loading control.