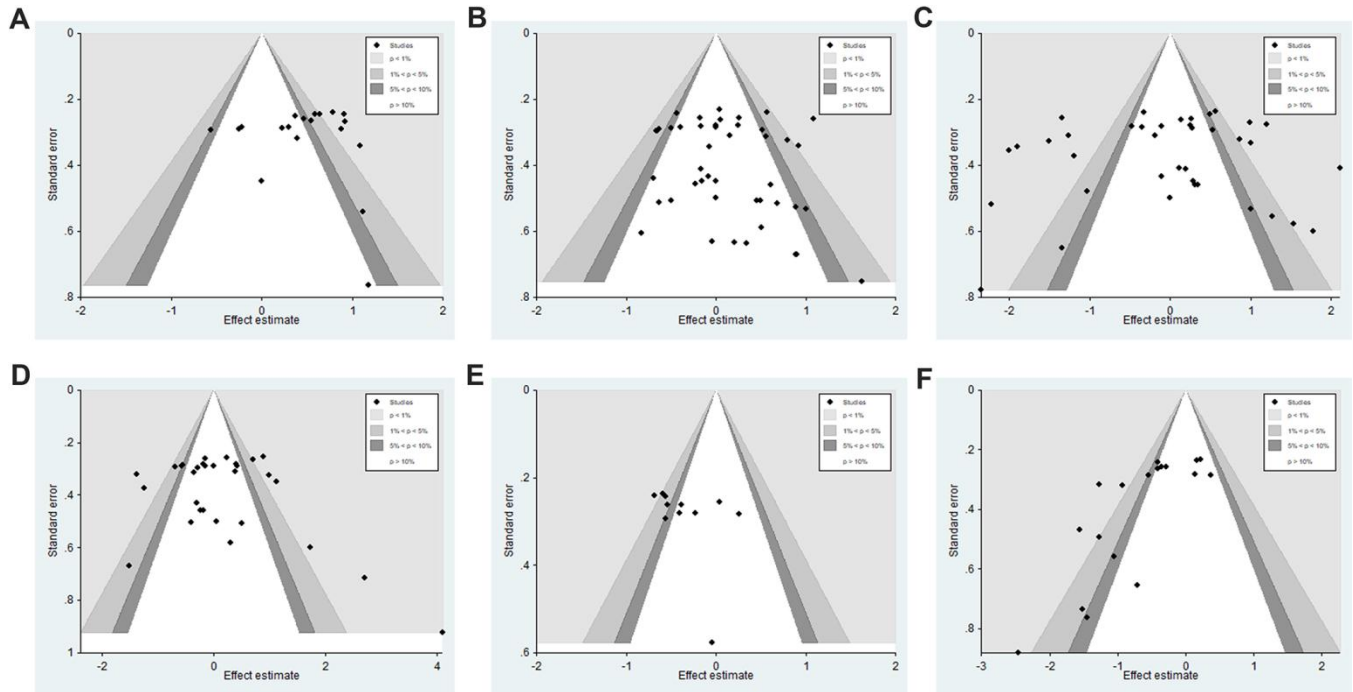
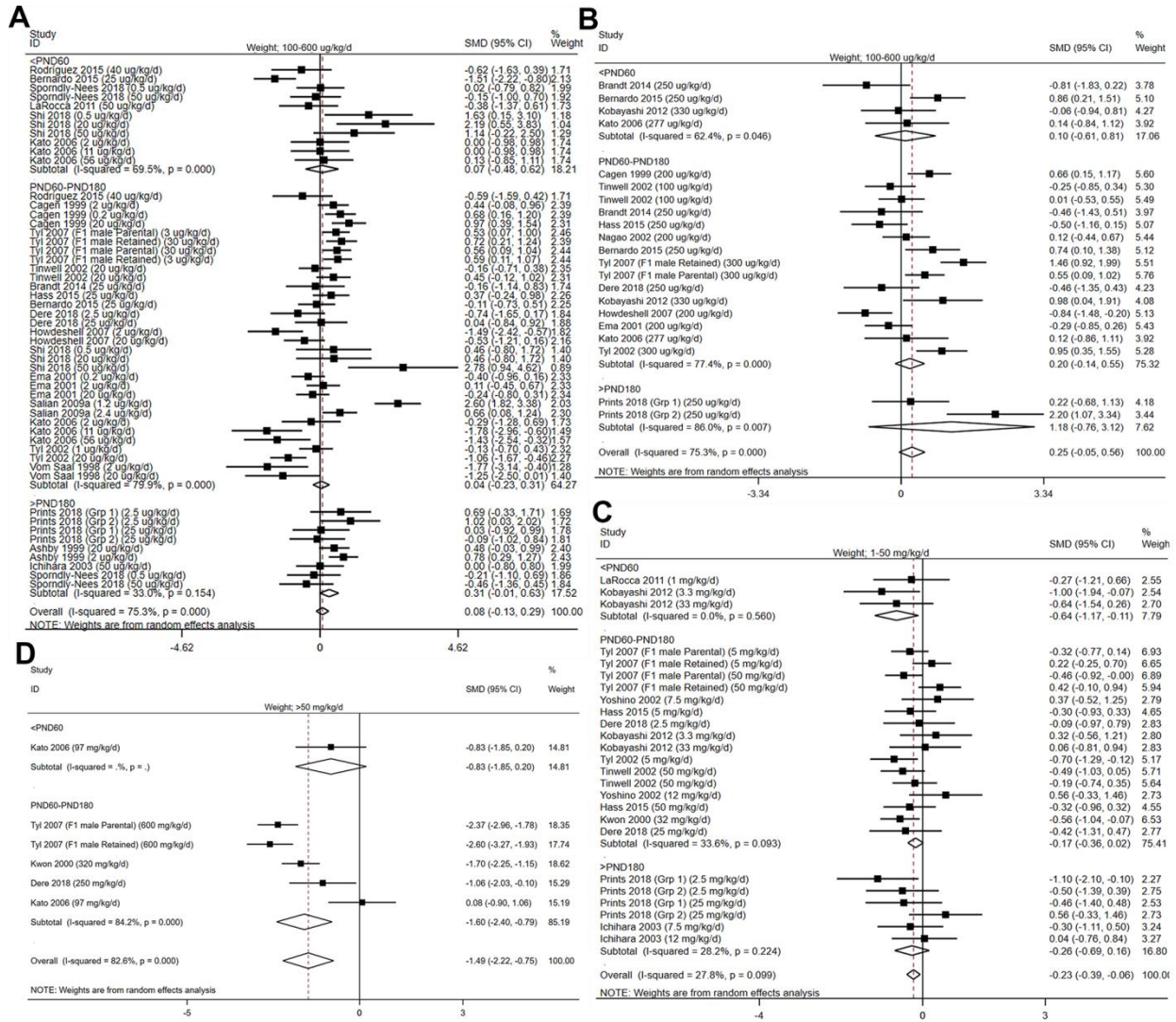


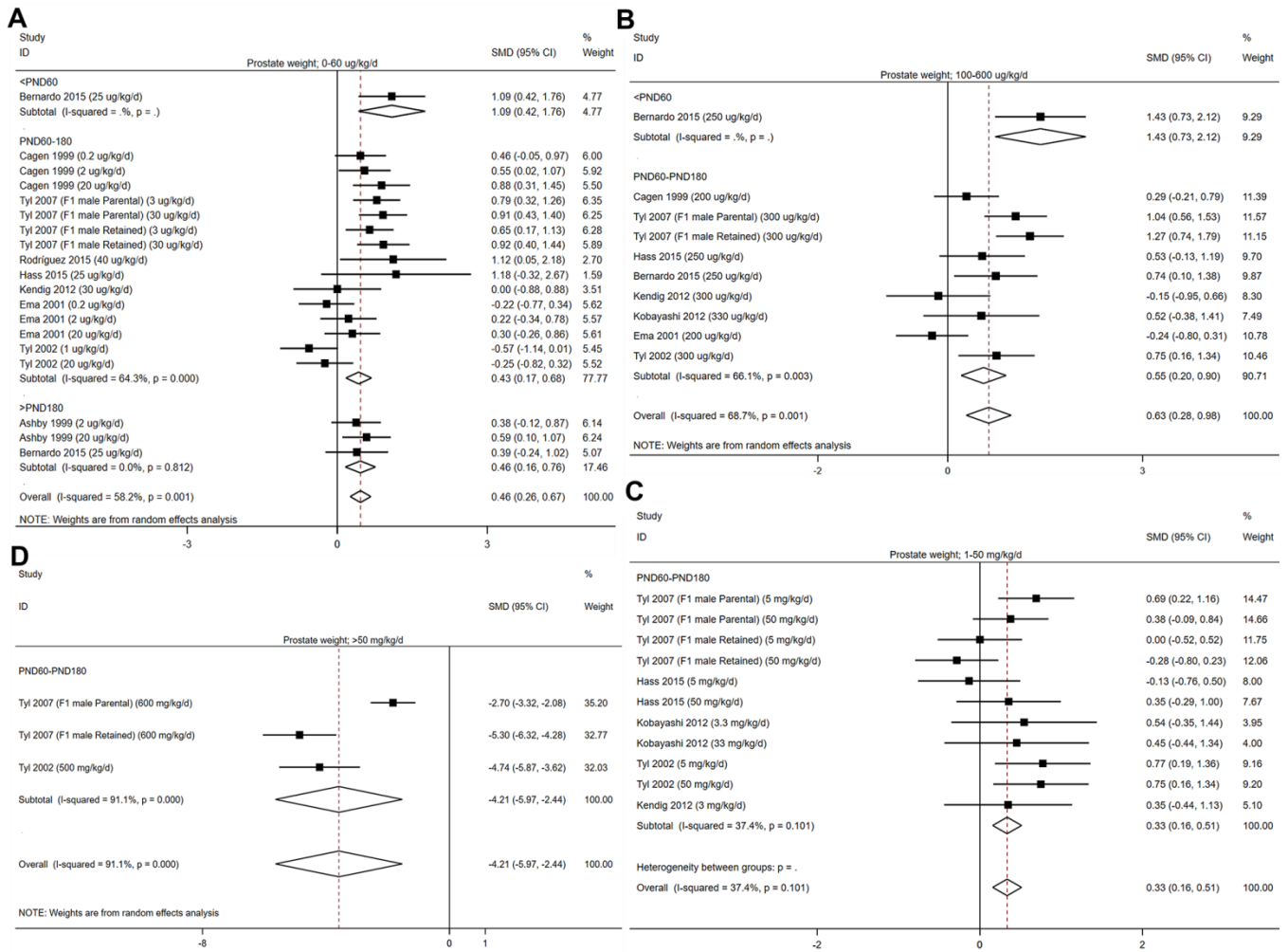
SUPPLEMENTARY FIGURES



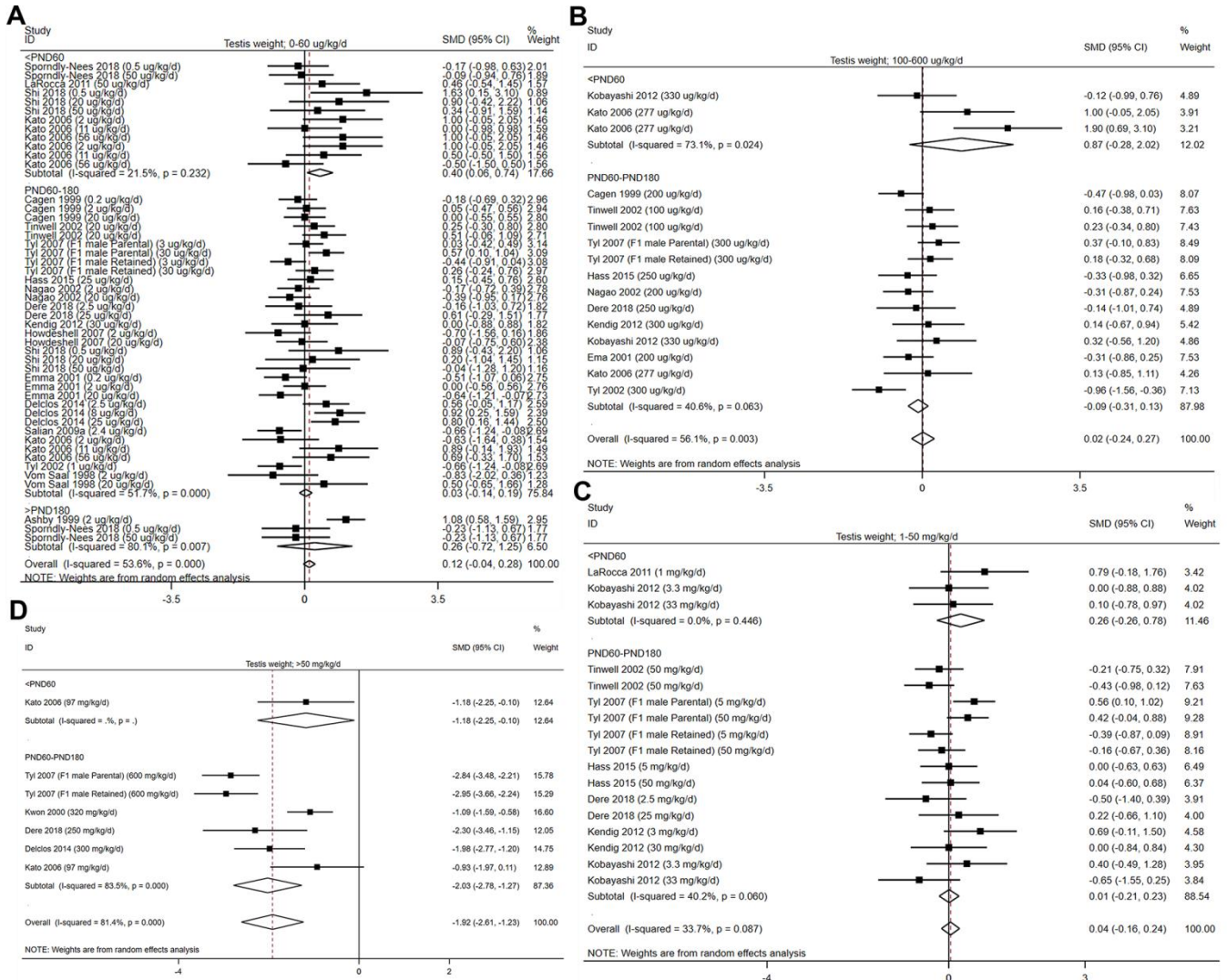
Supplementary Figure 1. Funnel plots of the analysis. Notes: (A) Funnel plot of prostate weight (0-60ug/kg/day); (B) Funnel plot of testis weight (0-60ug/kg/day);(C) Funnel plot of epididymis weight (0-60ug/kg/day); (D) Funnel plot of seminal vesicle weight (0-60ug/kg/day); (E) Funnel plot of daily sperm production (0-60ug/kg/day); (F) Funnel plot of epididymal sperm count (0-60ug/kg/day).



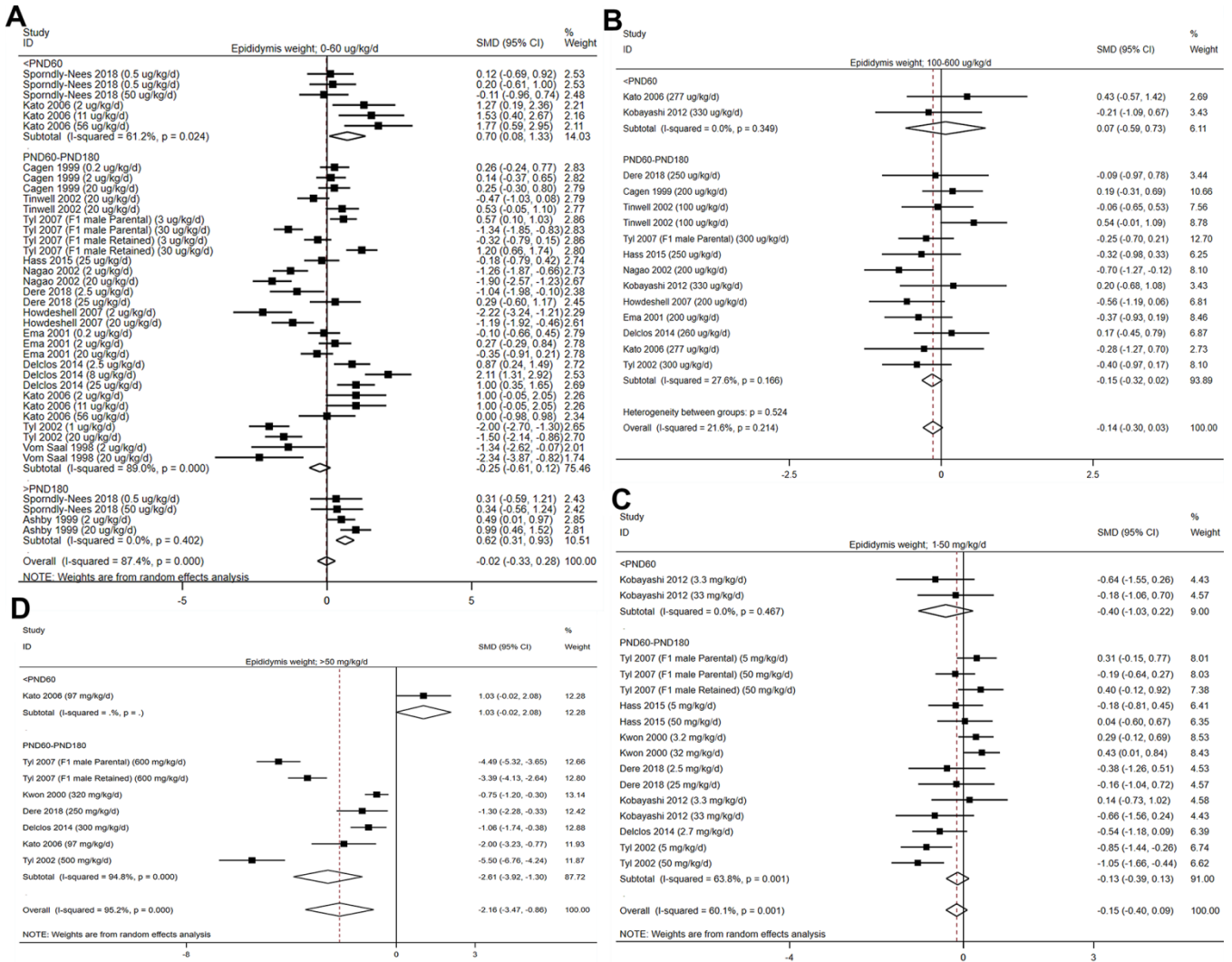
Supplementary Figure 2. Forest plots of body weight. Notes: (A) Forest plot of body weight (0-60ug/kg/day); (B), Forest plot of body weight (100-600ug/kg/day); (C) Forest plot of body weight (1-50mg/kg/day); (D), Forest plot of body weight (>50mg/kg/day).



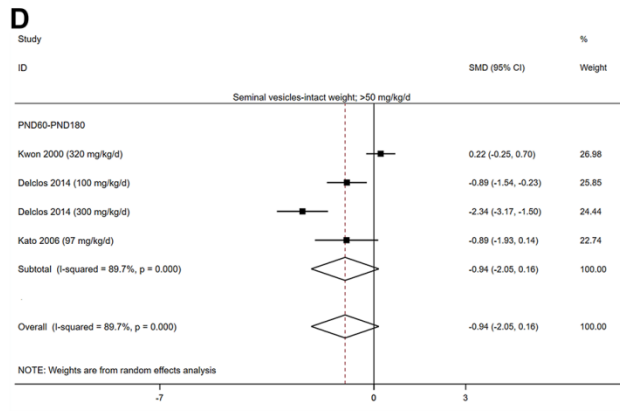
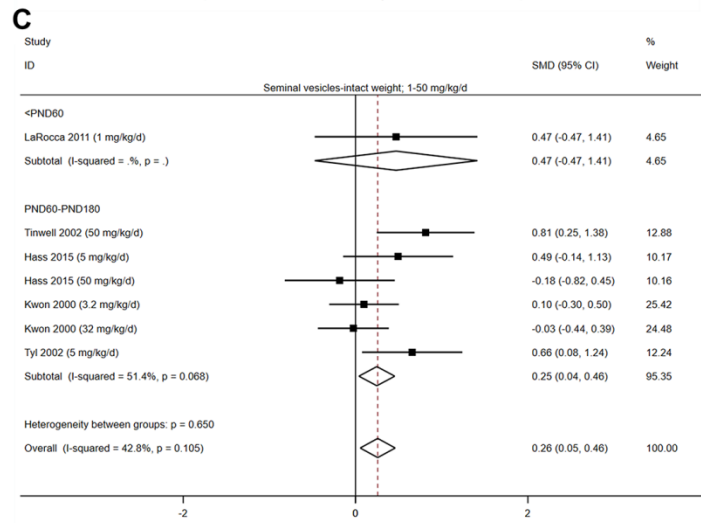
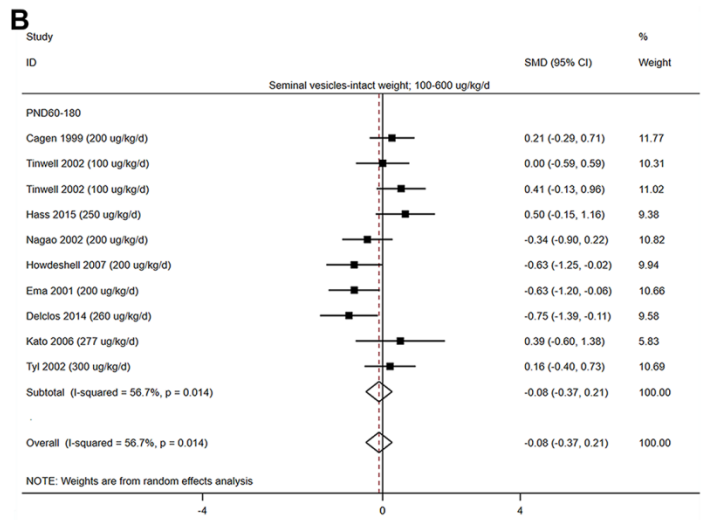
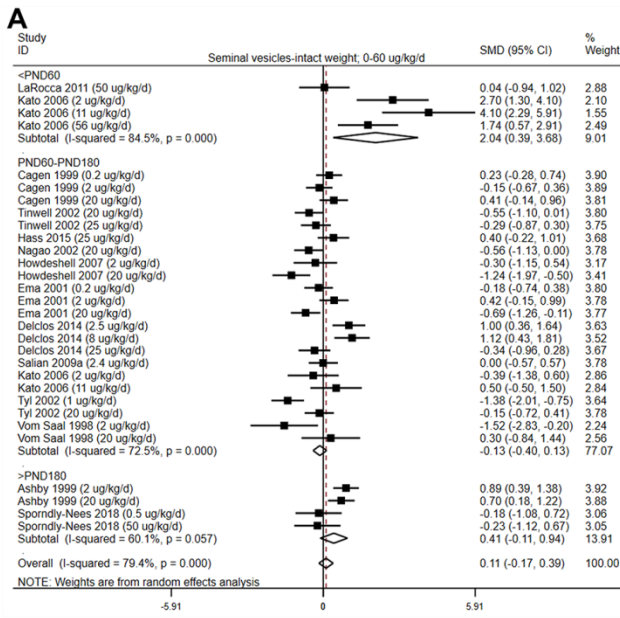
Supplementary Figure 3. Forest plots of prostate weight. Notes: (A) Forest plot of prostate weight (0-60ug/kg/day); (B) Forest plot of prostate weight (100-600ug/kg/day); (C) Forest plot of prostate weight (1-50mg/kg/day); (D) Forest plot of prostate weight (>50mg/kg/day).



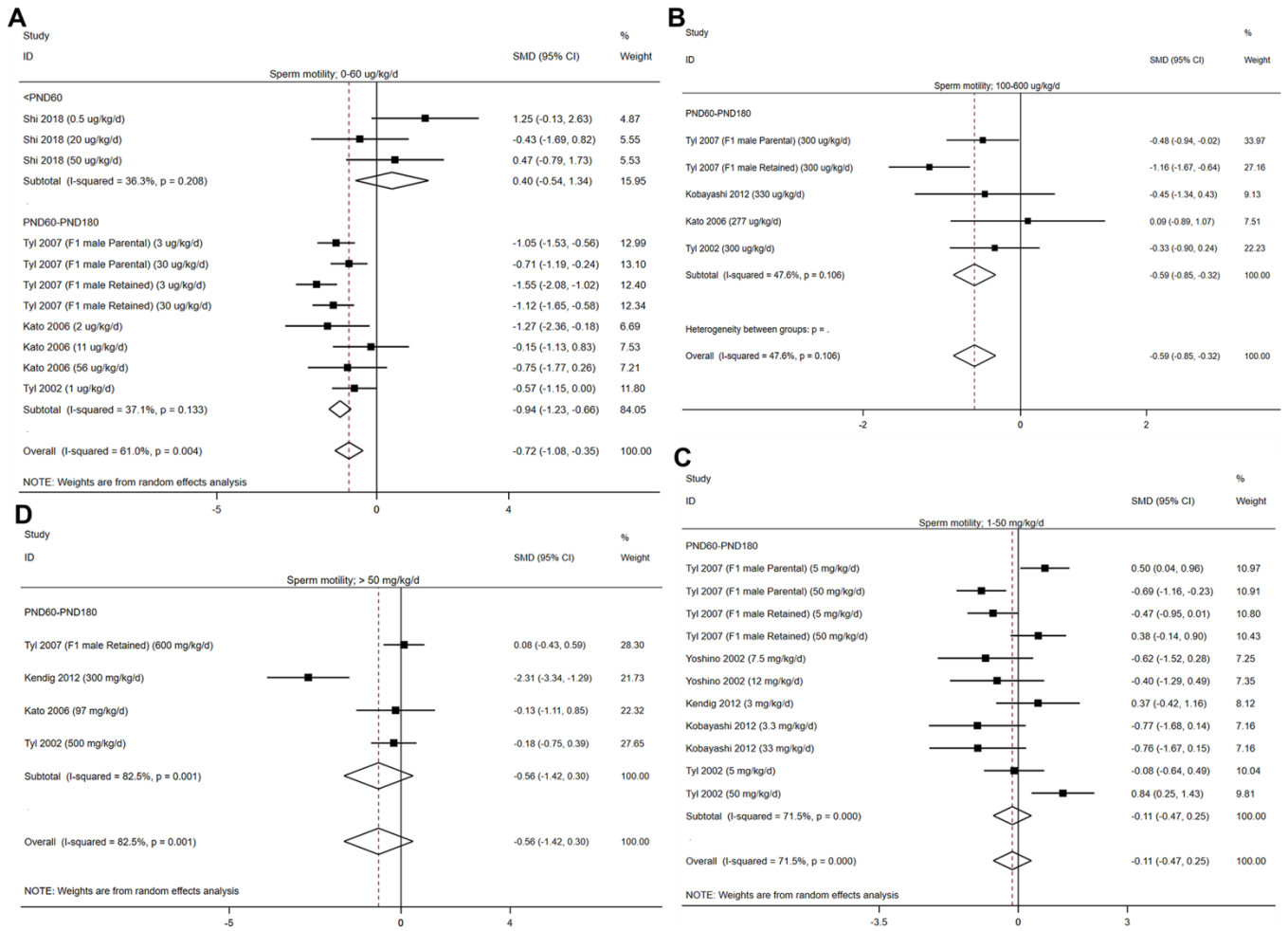
Supplementary Figure 4. Forest plots of testis weight. Notes: (A) Forest plot of testis weight (0-60ug/kg/day); (B) Forest plot of testis weight (100-600ug/kg/day); (C) Forest plot of testis weight (1-50mg/kg/day); (D) Forest plot of testis weight (>50mg/kg/day)



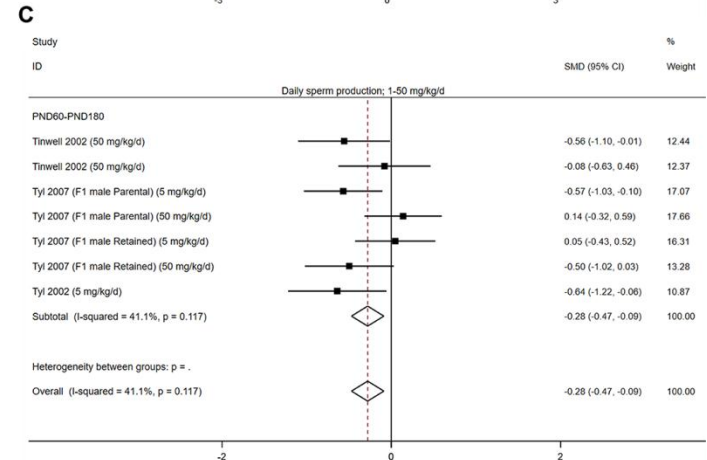
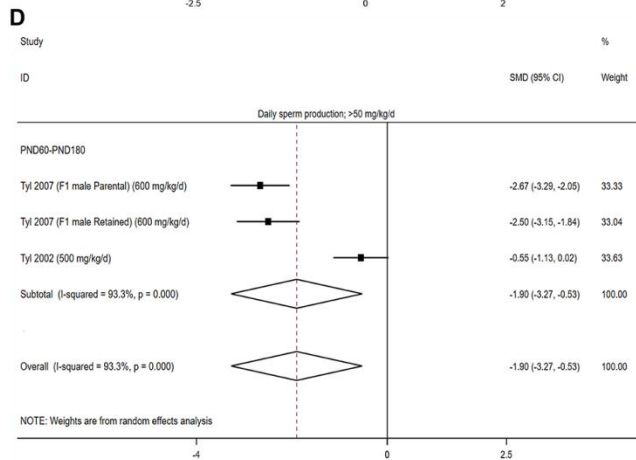
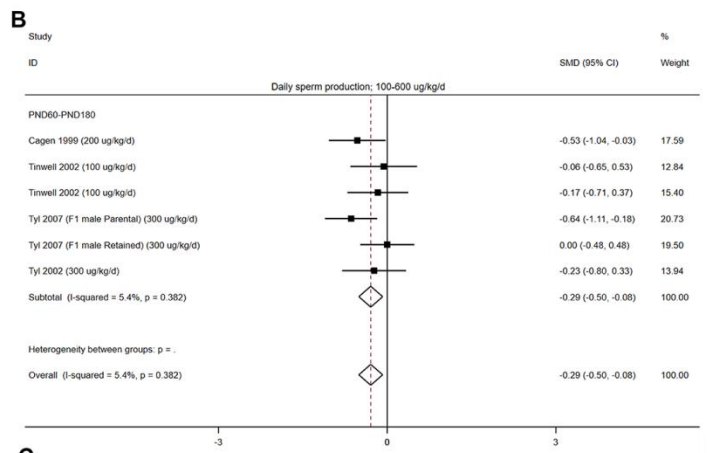
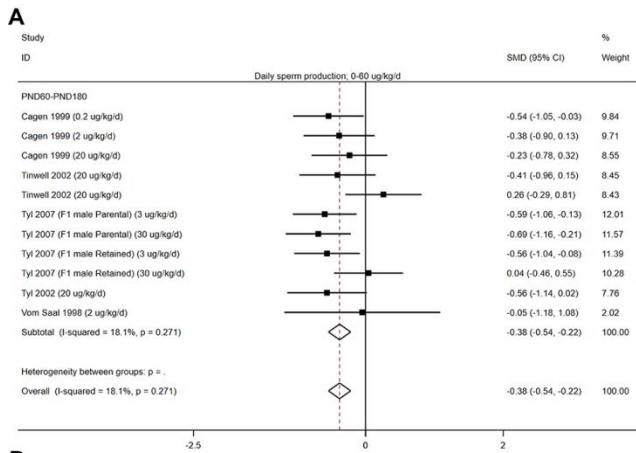
Supplementary Figure 5. Forest plots of epididymis weight. Notes: (A) Forest plot of epididymis weight (0-60ug/kg/day); (B) Forest plot of epididymis weight (100–600ug/kg/day); (C) Forest plot of epididymis weight (1-50mg/kg/day); (D) Forest plot of epididymis weight (>50mg/kg/day)



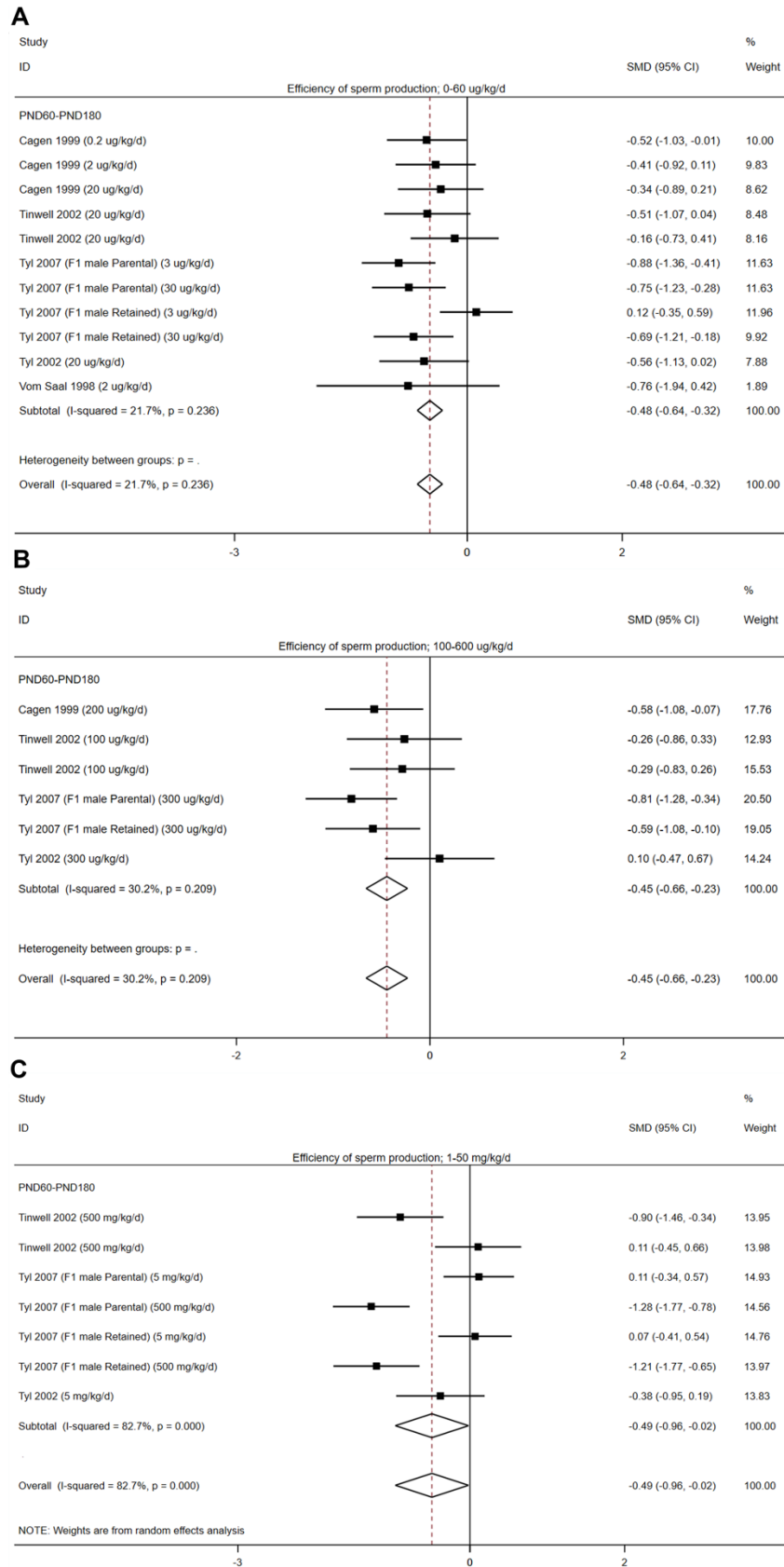
Supplementary Figure 6. Forest plots of seminal vesicle weight. Notes: (A) Forest plot of seminal vesicle weight (0-60ug/kg/day); (B) Forest plot of seminal vesicle weight (100–600ug/kg/day); (C) Forest plot of seminal vesicle weight (1-50mg/kg/day); (D) Forest plot of seminal vesicle weight (>50mg/kg/day).



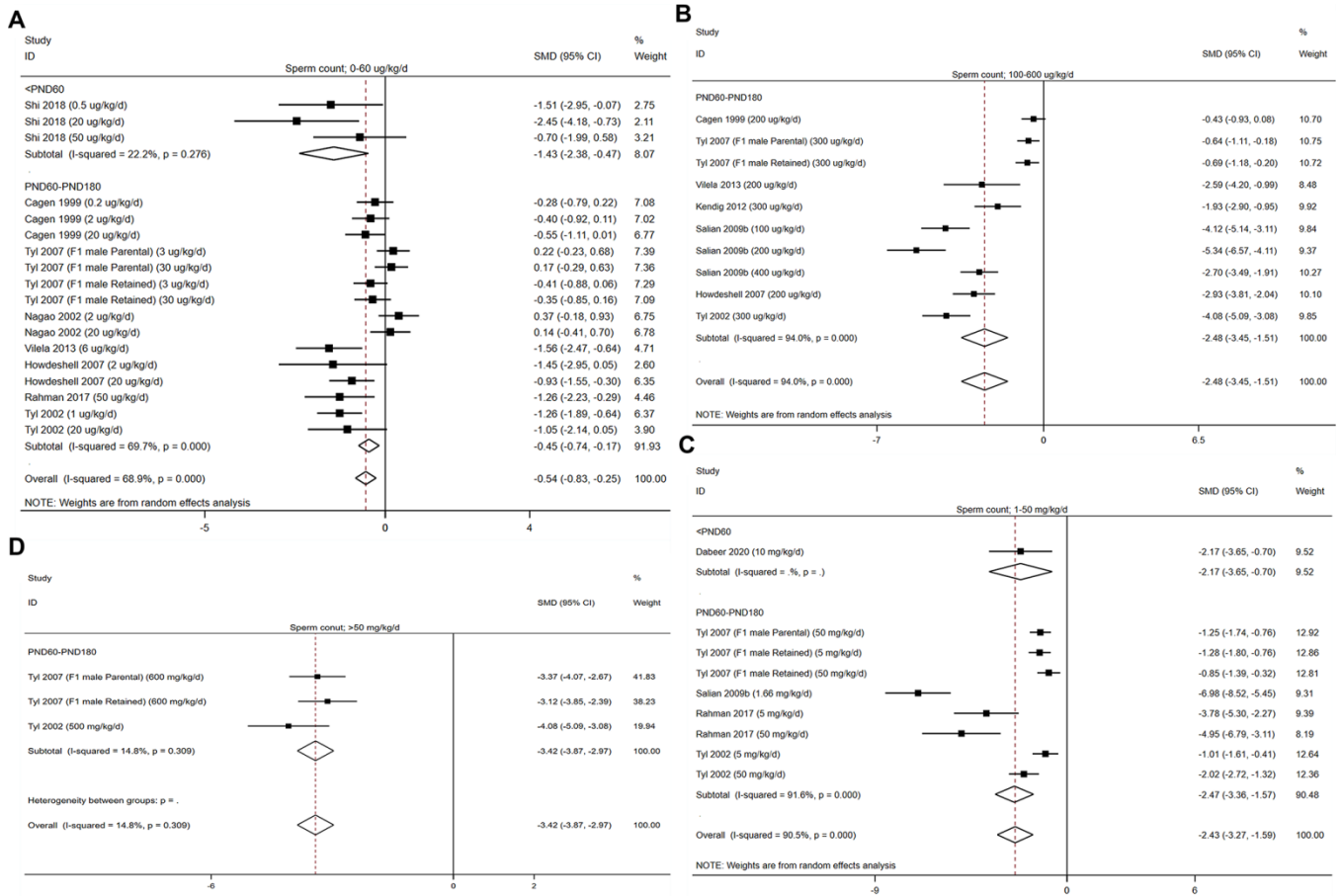
Supplementary Figure 7. Forest plots of sperm motility. Notes: (A) Forest plot of sperm motility (0-60ug/kg/day); (B) Forest plot of sperm motility (100–600ug/kg/day); (C) Forest plot of sperm motility (1-50mg/kg/day); (D) Forest plot of sperm motility (>50mg/kg/day).



Supplementary Figure 8. Forest plots of daily sperm production. Notes: (A) Forest plot of daily sperm production (0-60ug/kg/day); (B) Forest plot of daily sperm production (100-600ug/kg/day); (C) Forest plot of daily sperm production (1-50mg/kg/day); (D) Forest plot of daily sperm production (>50mg/kg/day).



Supplementary Figure 9. Forest plots of efficiency of sperm production. Notes: (A) Forest plot of daily sperm production (0-60ug/kg/day); (B) Forest plot of daily sperm production (100–600ug/kg/day); (C) Forest plot of daily sperm production (1-50mg/kg/day).



Supplementary Figure 10. Forest plots of epididymal sperm count. Notes: (A) Forest plot of epididymal sperm count (0-60ug/kg/day); (B) Forest plot of epididymal sperm count (100–600ug/kg/day); (C) Forest plot of epididymal sperm count (1-50mg/kg/day); (D) Forest plot of daily epididymal sperm count (>50mg/kg/day).