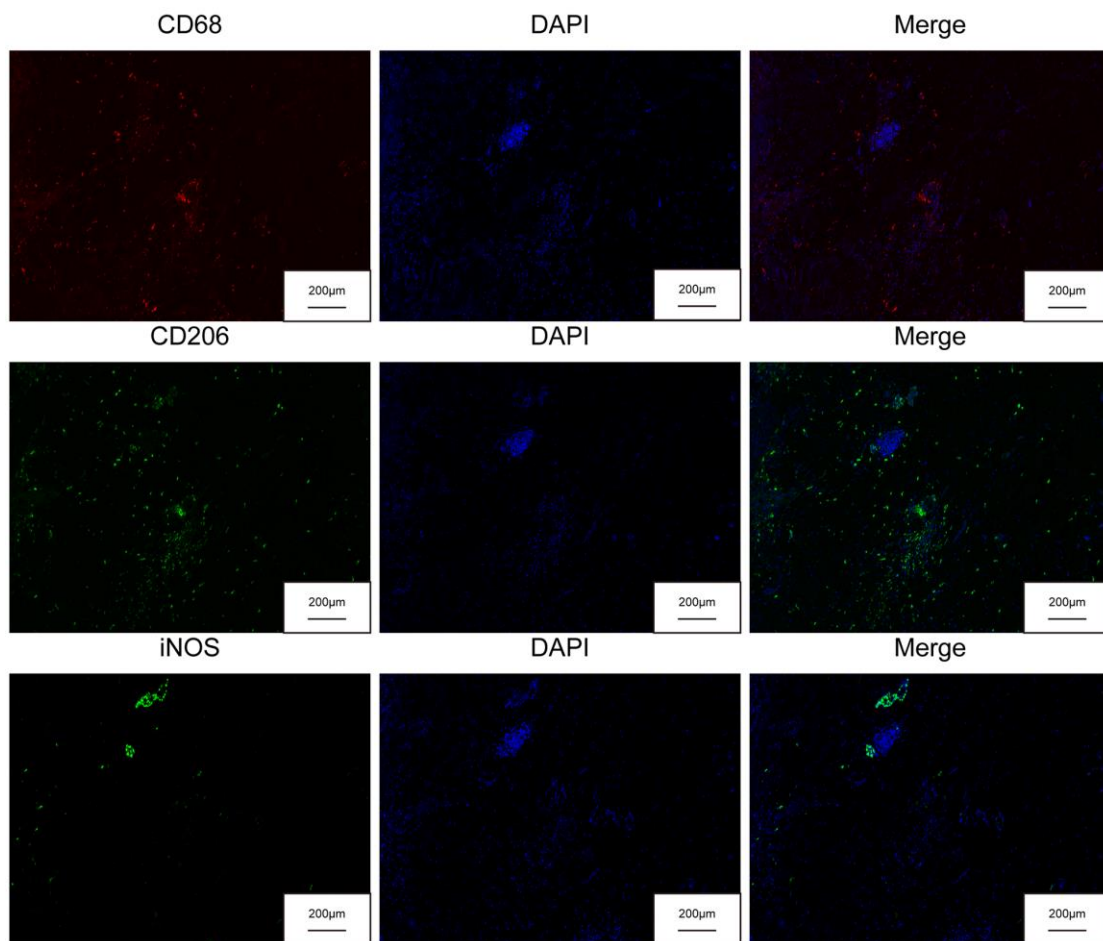
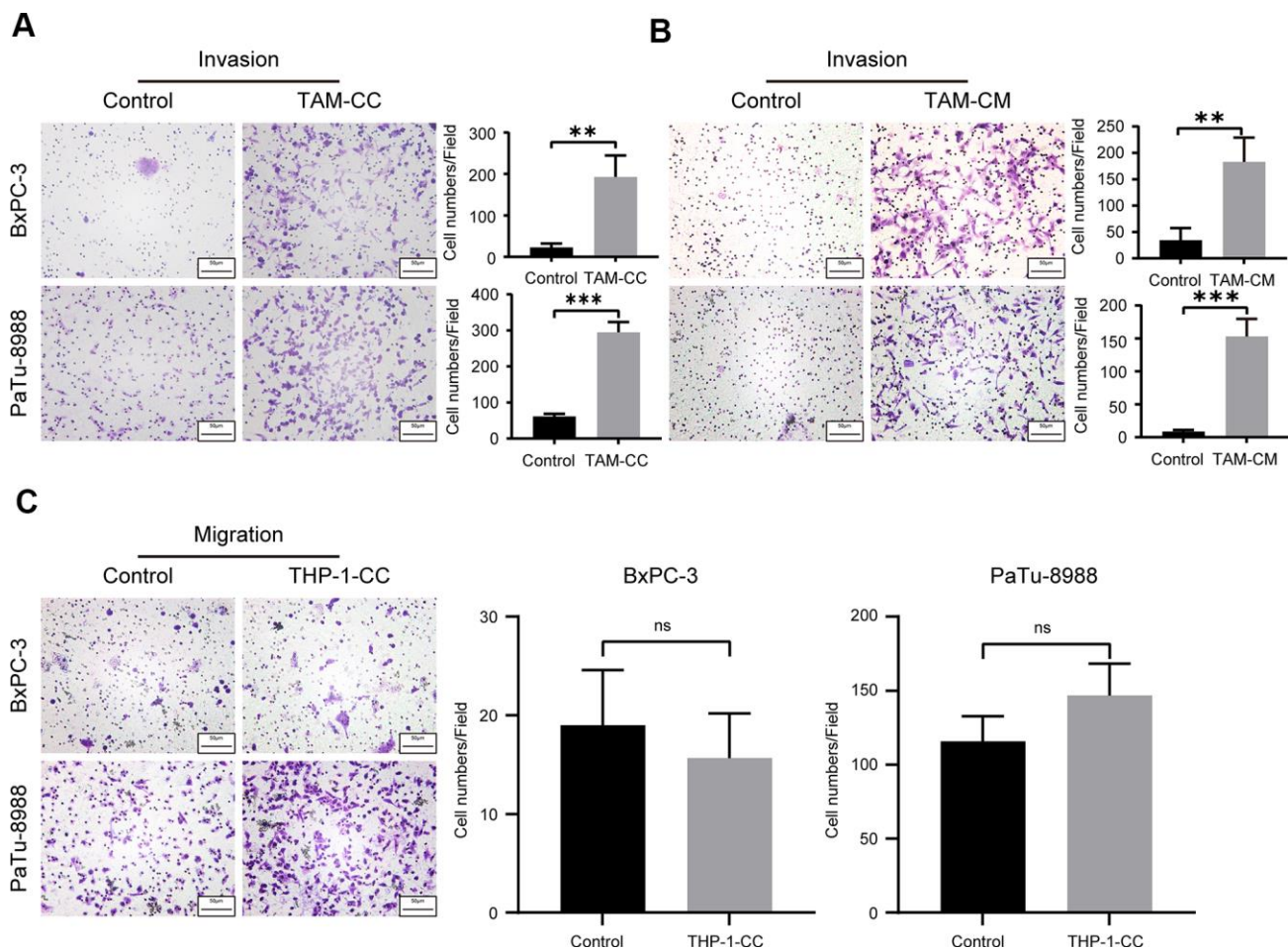


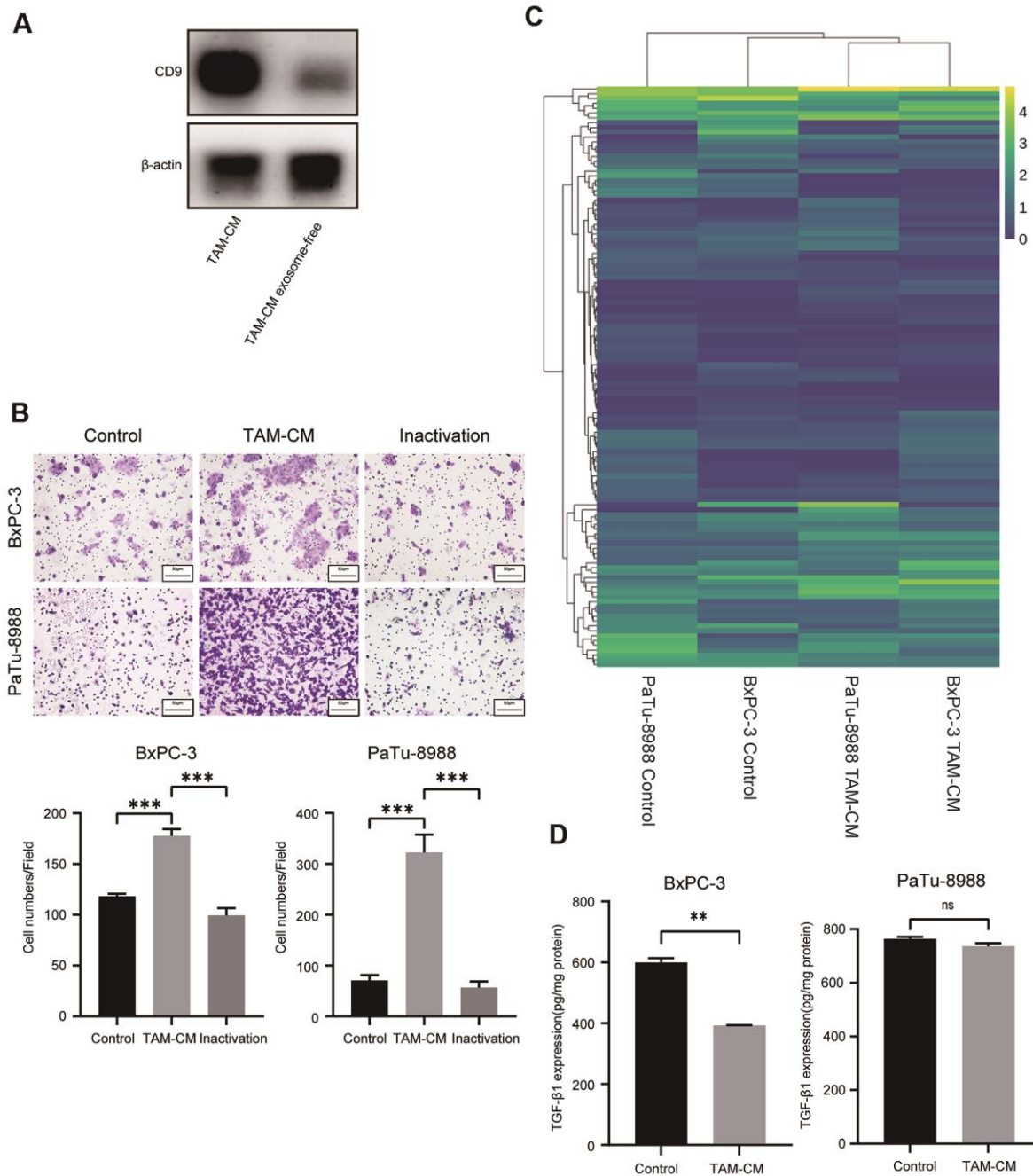
SUPPLEMENTARY FIGURES



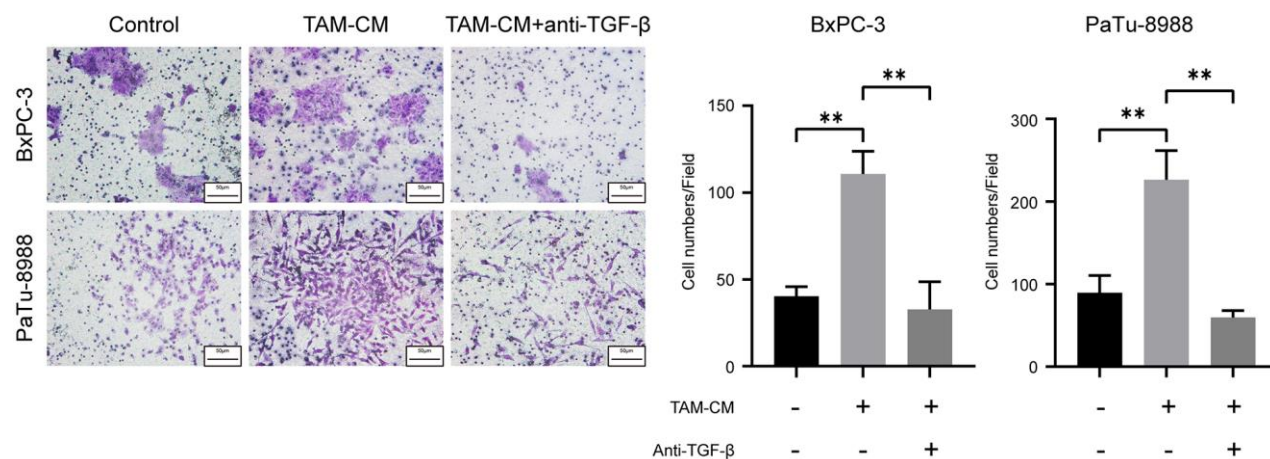
Supplementary Figure 1. Representative fluorescence microscopy images show the staining of CD68, iNOS, and CD206 in the PDAC tissues (Scale bar = 200 µm).



Supplementary Figure 2. (A) Transwell assay results show invasiveness of BxPC-3 and PaTu-8988 cells that are co-cultured with TAMs (TAM-CC). Scale bar = 50 μ m; **P < 0.01, ***P < 0.001. (B) Transwell assay results show invasiveness of BxPC-3 and PaTu-8988 cells after treatment with TAM-CM. Scale bar = 50 μ m, **P < 0.01, ***P < 0.001. (C) Transwell assay results show migration ability of BxPC-3 and PaTu-8988 cells that are co-cultured with THP-1 cells. Scale bar = 50 μ m.



Supplementary Figure 3. (A) Western blot analysis shows the levels of exosome marker proteins CD9 in TAM-CM and exosome-free TAM-CM. (B) The heatmap shows 121 differentially expressed genes in the TAM-CM treated BxPC-3 and PaTu-8988 cells compared to the corresponding controls. (C) Transwell assay results show migration and invasiveness of BxPC-3 and PaTu-8988 cells incubated with normal TAM-CM or inactivated TAM-CM. Scale bar = 50 μ m; *** P < 0.001. (D) ELISA analysis shows the levels of TGF- β 1 secreted by BxPC-3 or PaTu-8988 cells incubated with or without TAM-CM. ** P < 0.01.



Supplementary Figure 4. Transwell assays show the invasiveness of BxPC-3 and PaTu-8988 cells incubated with TAM-CM in presence or absence of the neutralizing TGF- β antibody. Scale bar = 50 μ m; **P < 0.01.