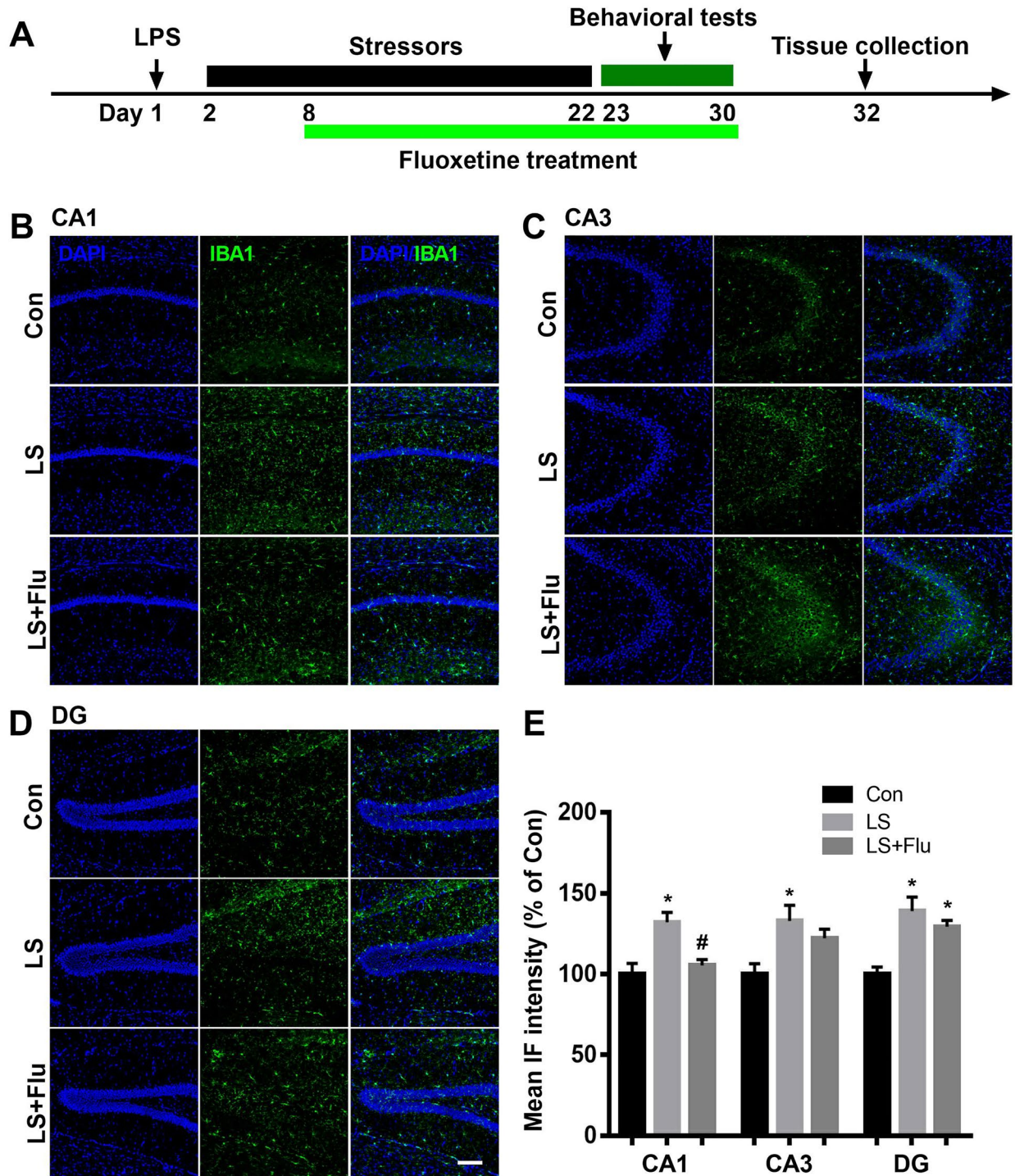
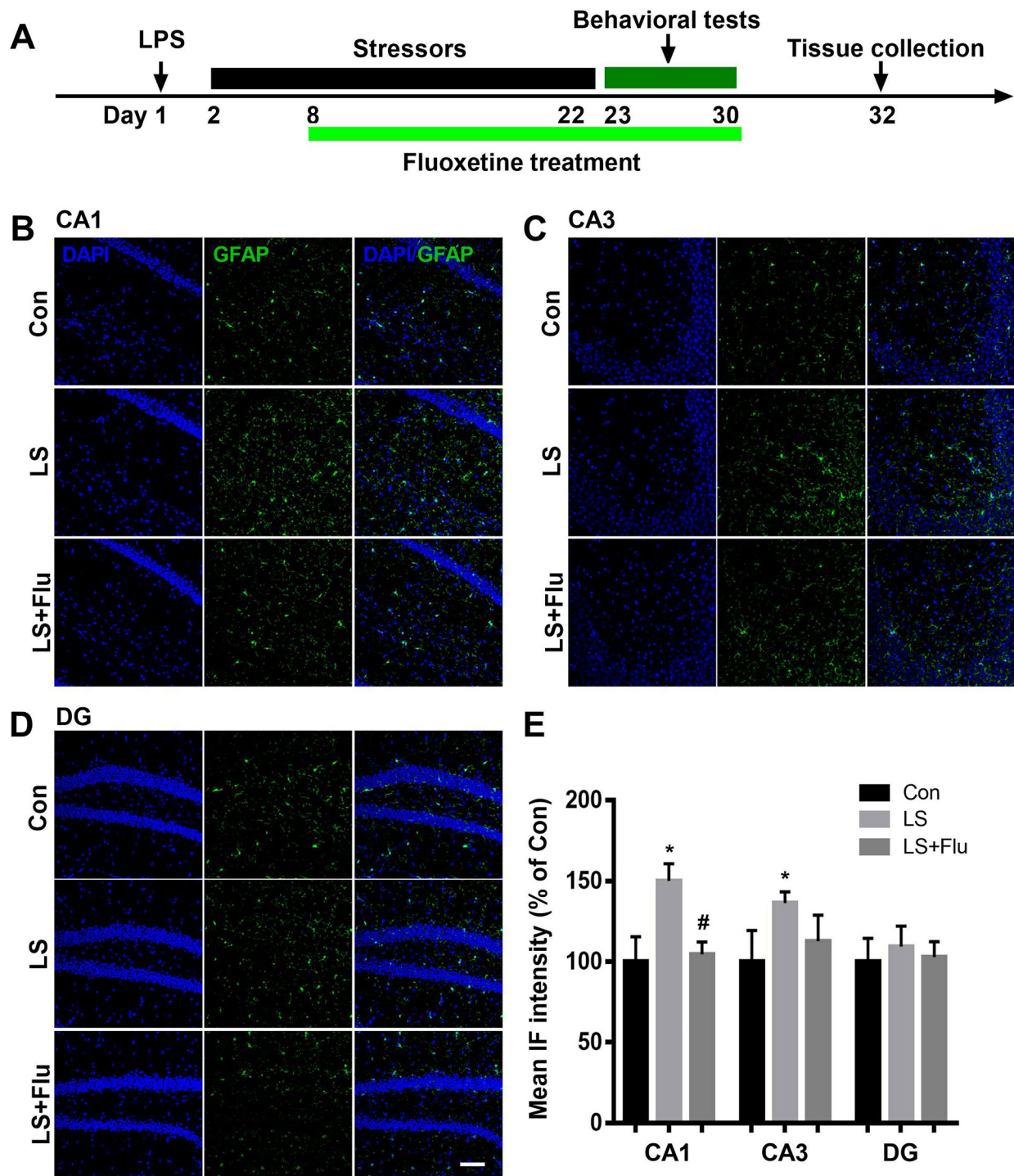


SUPPLEMENTARY FIGURES



**Supplementary Figure 1. Fluoxetine treatment attenuated activation of microglia after combined stress.** (A) Schematic timeline of the experimental procedure. (B–D) Representative images of IBA-1-positive cells in all subregions of the hippocampus. (E) Quantification of mean IBA-1 immunofluorescence in the hippocampus. Data are shown as mean  $\pm$  SEM ( $n = 4$ ), \* $P < 0.05$  vs control group, # $P < 0.05$  vs LS group, scale bar = 100  $\mu$ m. Con, control; LPS, lipopolysaccharide; Flu, fluoxetine; IF, immunofluorescence; LS, LPS + stress.



**Supplementary Figure 2. Fluoxetine treatment attenuated activation of astrocytes after combined stress.** (A) Schematic timeline of the experimental procedure. (B–D) Representative images of GFAP-positive cells in all subregions of the hippocampus. (E) Quantification of mean GFAP immunofluorescence in the hippocampus. Data are shown as mean  $\pm$  SEM ( $n = 4$ ), \* $P < 0.05$  vs control group, # $P < 0.05$  vs LS group, scale bar = 100  $\mu$ m. Con, control; LPS, lipopolysaccharide; Flu, fluoxetine; IF, immunofluorescence; LS, LPS + stress.