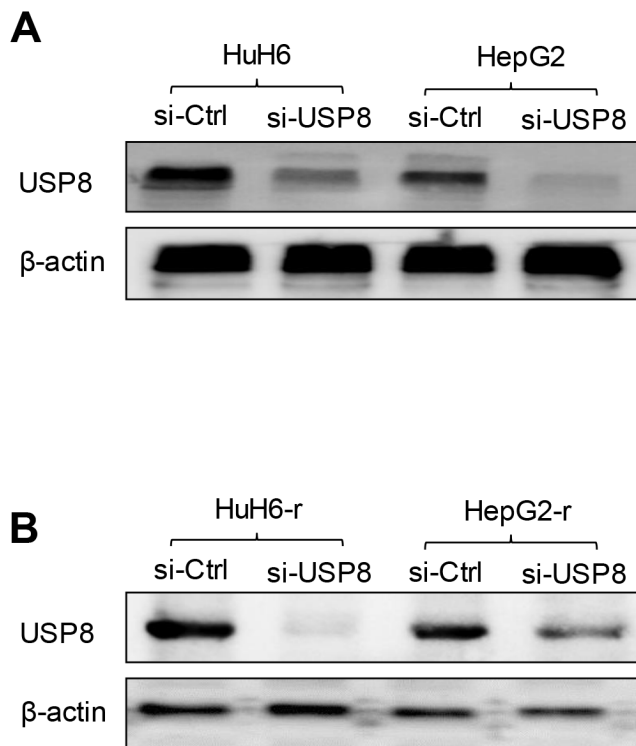
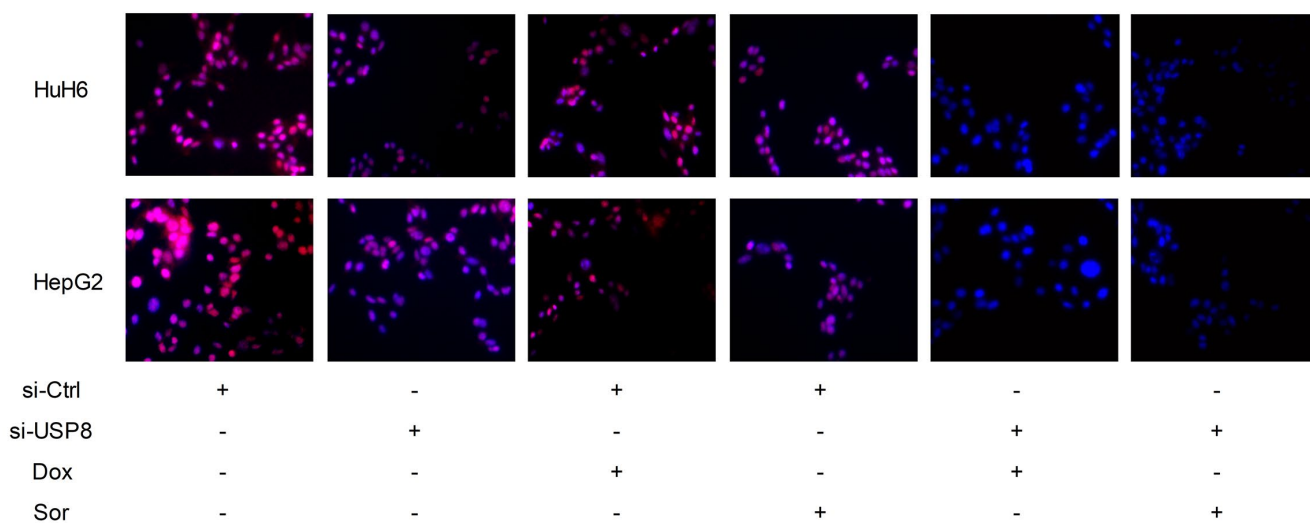


SUPPLEMENTARY MATERIALS

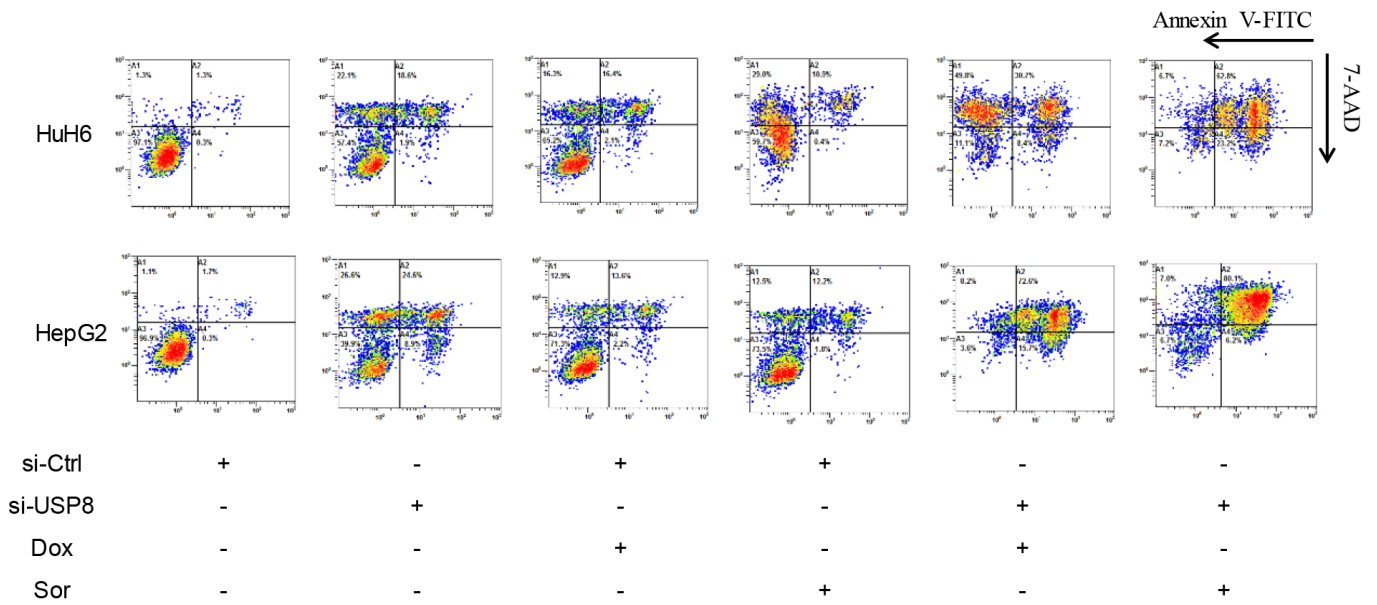
Supplementary Figures



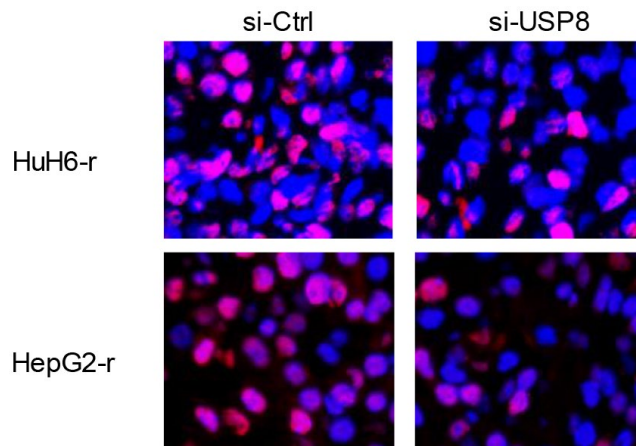
Supplementary Figure 1. Reduction of USP8 protein in si-USP8 treated HCC cell lines. Western blot of USP8 in HuH6 and HepG2 (A), HuH6-r and HepG2-r (B) cells after si-USP8 transfection.



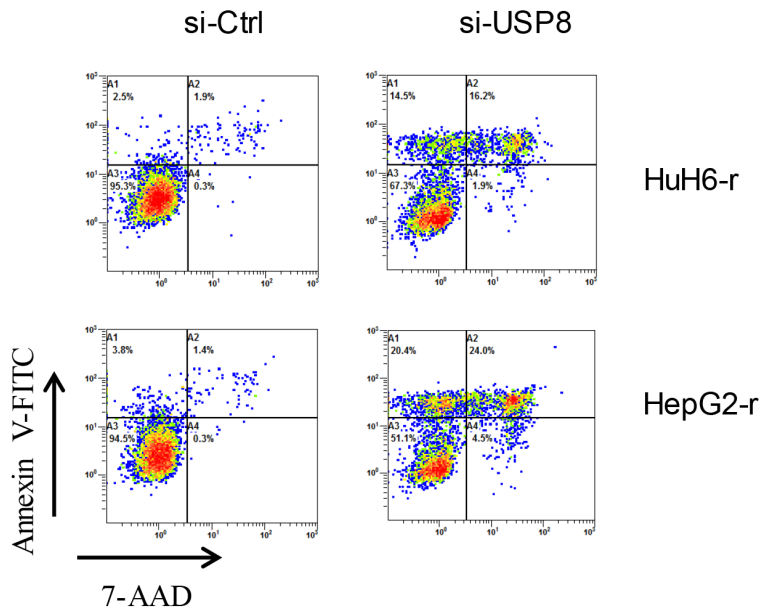
Supplementary Figure 2. Representative BrdU staining in si-USP8 treated HCC cell lines. Doxorubicin at 0.1 μM and sorafenib at 0.5 μM were added to cells at 48 hours post-transfection. BrdU staining was performed after 3 days drug treatment.



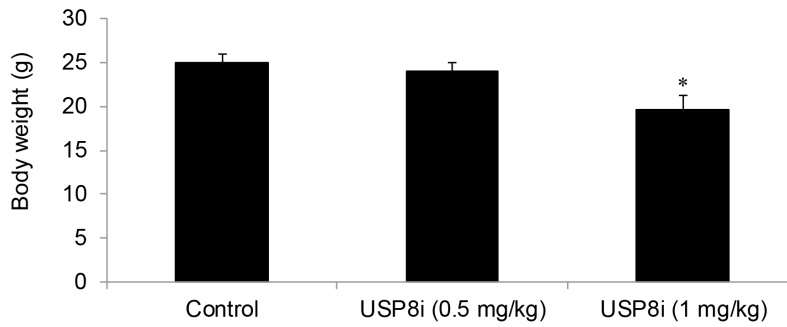
Supplementary Figure 3. Representative FACS images in si-USP8 treated HCC cell lines. Doxorubicin at 0.1 μ M and sorafenib at 0.5 μ M were added to cells at 48 hours post-transfection. Flow cytometry of Annexin V and 7-AAD staining was performed after 3 days drug treatment.



Supplementary Figure 4. Representative BrdU staining in si-USP8 treated HCC cell lines.



Supplementary Figure 5. Representative FACS images in si-USB8 treated HCC cell lines.



Supplementary Figure 6. Mice body weight in control and USB8i-treated groups. USB8i at 1 mg/kg but not 0.5 mg/kg significantly decreased mice body weight. * $p < 0.05$, compared to control.