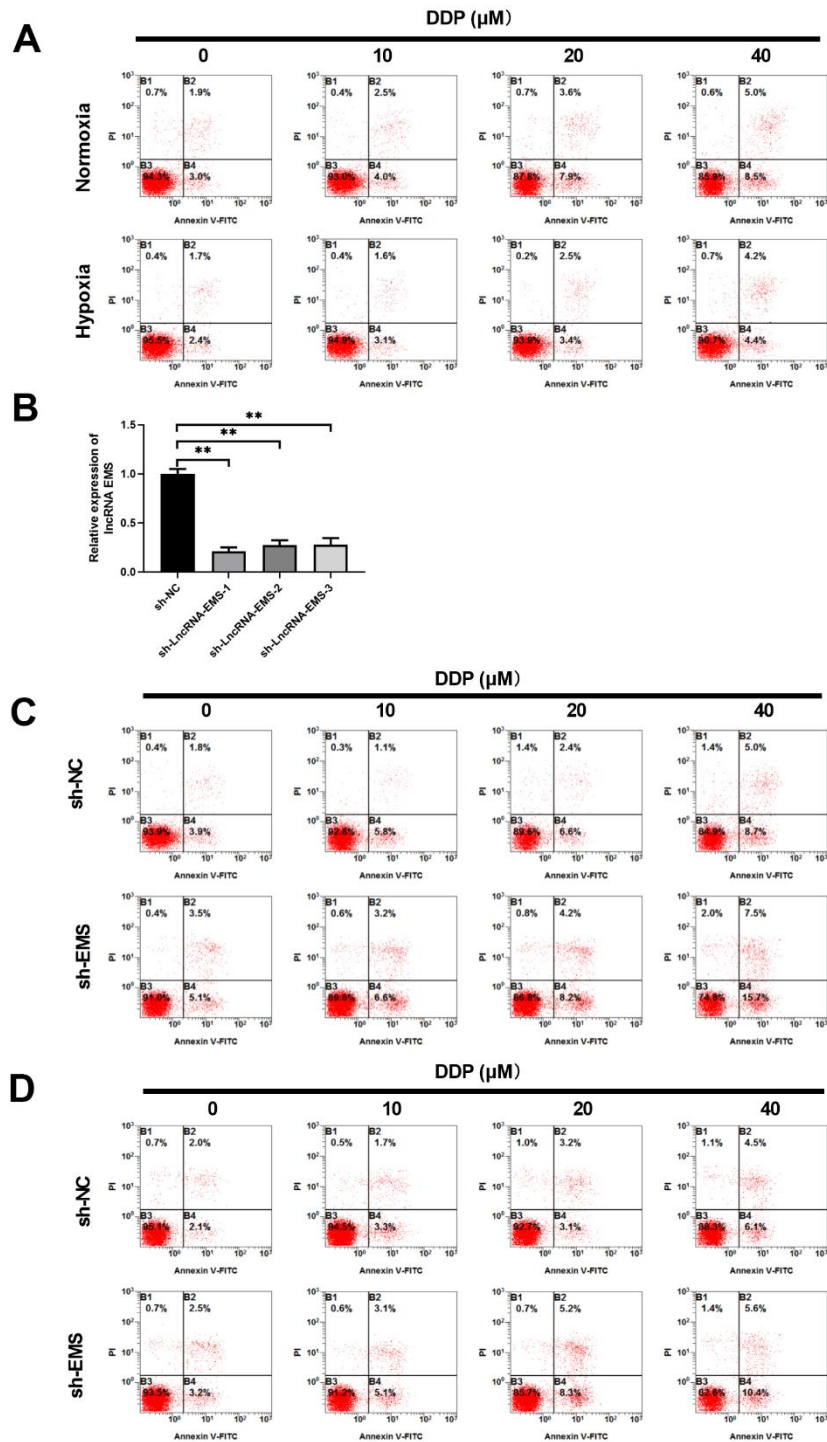
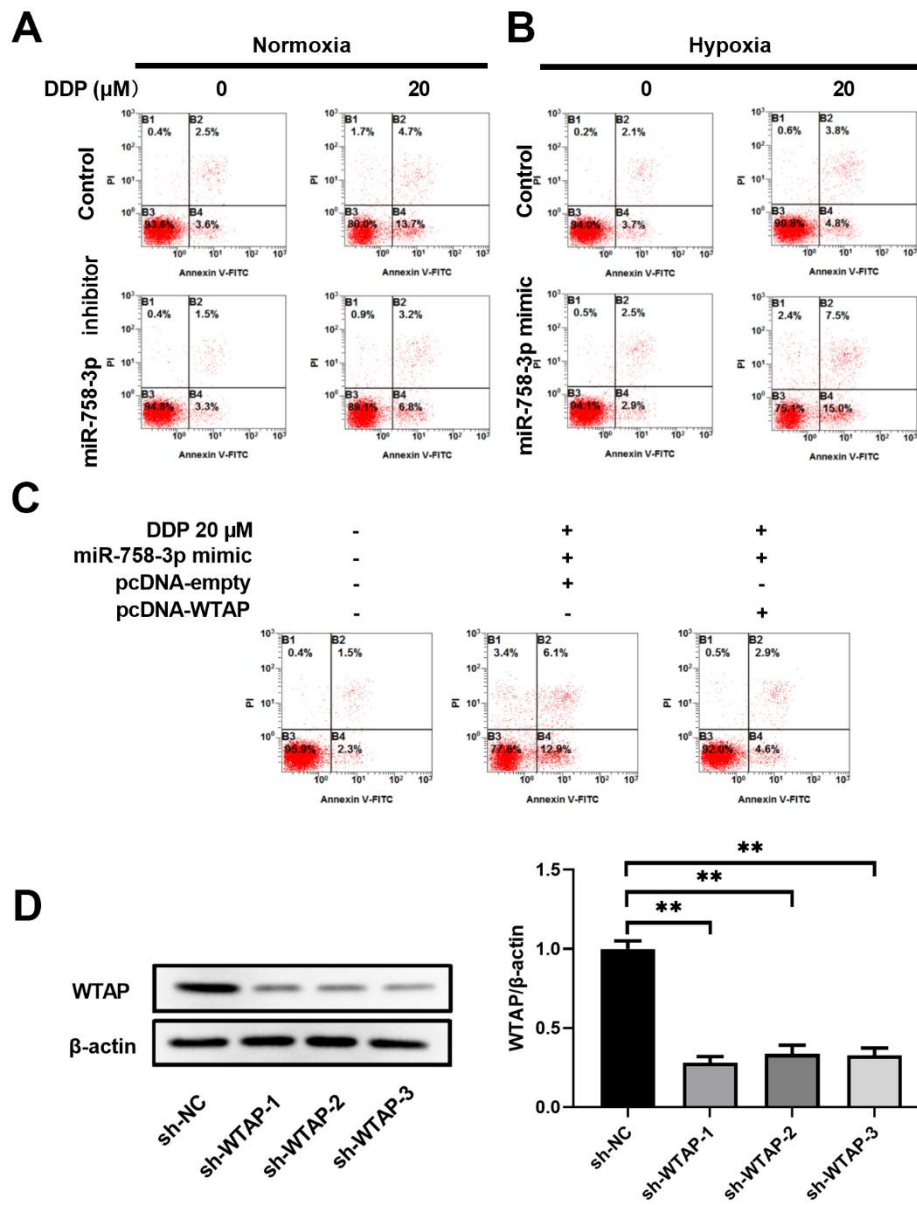


SUPPLEMENTARY FIGURES



Supplementary Figure 1. Silencing IncRNA EMS increases the apoptosis of esophageal carcinoma ECA-109 cells induced by DDP both under normoxia and hypoxia. (A) Apoptosis of ECA-109 cells at normoxia and hypoxia conditions in the presence of DDP at the indicated doses for 24 h determined by flow cytometry. (B) Confirmation of IncRNA EMS knockdown in ECA-109 cells with shRNA method determined by RT-qPCR. (C) Apoptosis of ECA-109 cells in the presence of DDP at the indicated doses for 24 h under normoxia determined by flow cytometry. (D) Apoptosis of ECA-109 cells in the presence of DDP at the indicated doses for 24 h under hypoxia determined by flow cytometry.



Supplementary Figure 2. WTAP alleviates the effect of miR-758-3p on the apoptosis of esophageal carcinoma ECA109 cells induced by DDP. (A) Apoptosis of ECA-109 cells after transfected with miR-758-3p inhibitor and treated with 20 μM DDP under normoxia; (B) Apoptosis of ECA-109 cells after transfected with miR-758-3p mimic and treated with 20 μM DDP under hypoxia; (C) Apoptosis of ECA-109 cells after transfected with miR-758-3p mimic and treated with 20 μM DDP under hypoxia. (D) Confirmation of WTAP knockdown in ECA-109 cells using western blot.