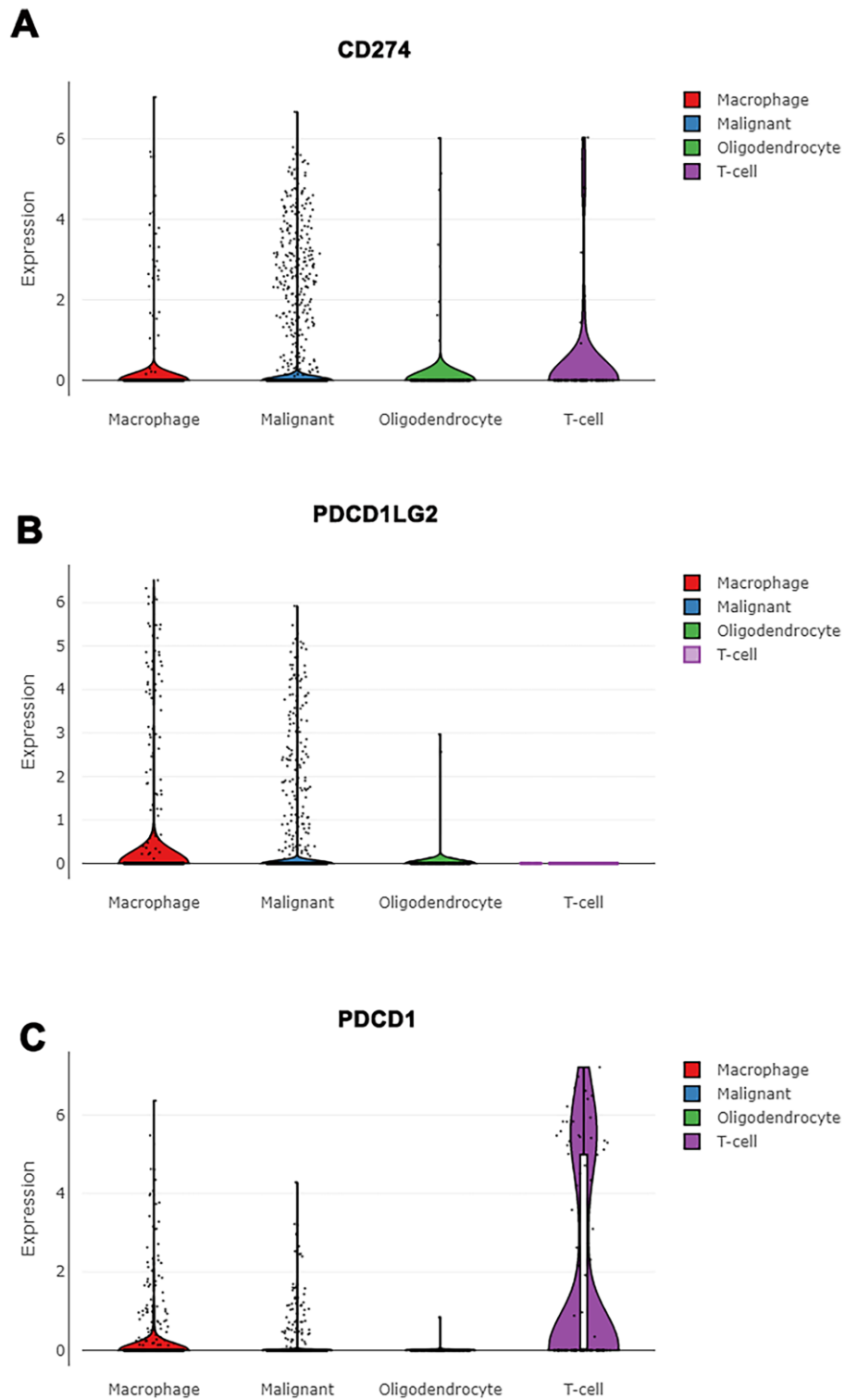
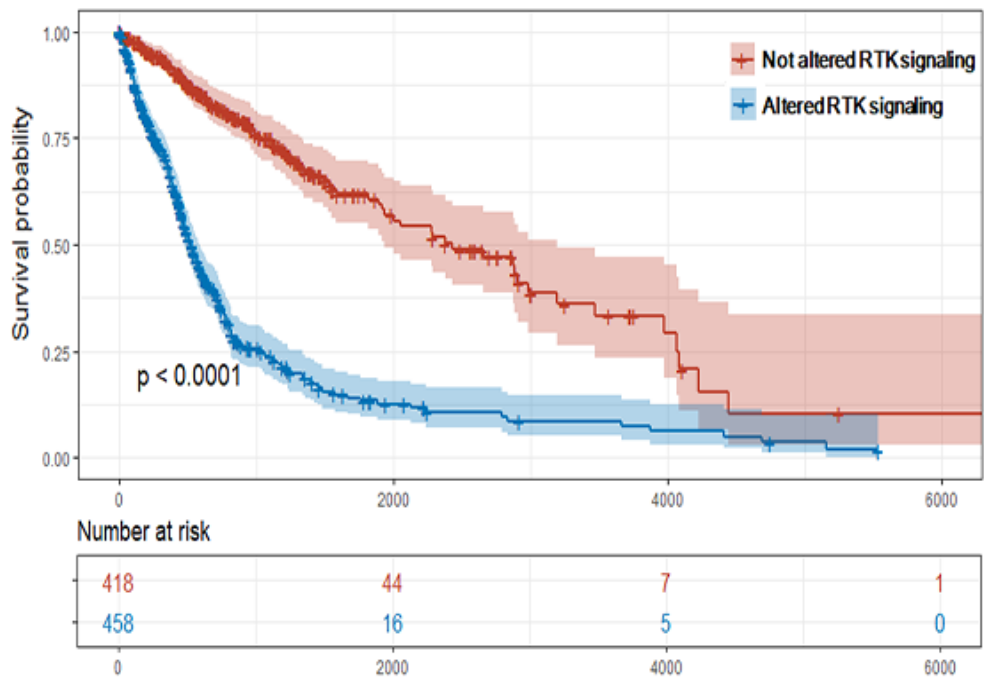


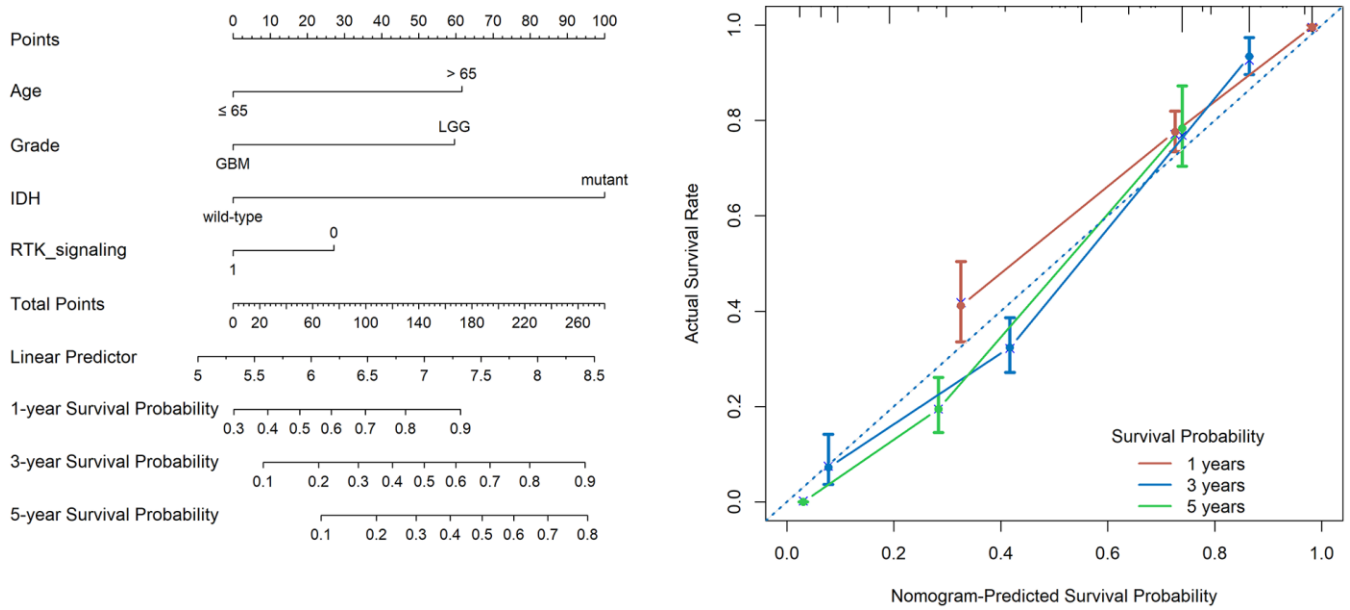
SUPPLEMENTARY FIGURES



Supplementary Figure 1. The single cell analysis showed the distribution of CD274, PDCD1LG2 and PDCD1 according to cell type. (A, B) CD274 and PDCD1LG2 were highly expressed in both malignant cells and immune cells in gliomas. (C) The expression of PDCD1 was significantly increased in T cells.



Supplementary Figure 2. The survival analysis of RTK/Ras/PI3K/AKT signaling in gliomas.



Supplementary Figure 3. Prognostic nomogram for OS and calibration curve for predicting OS.