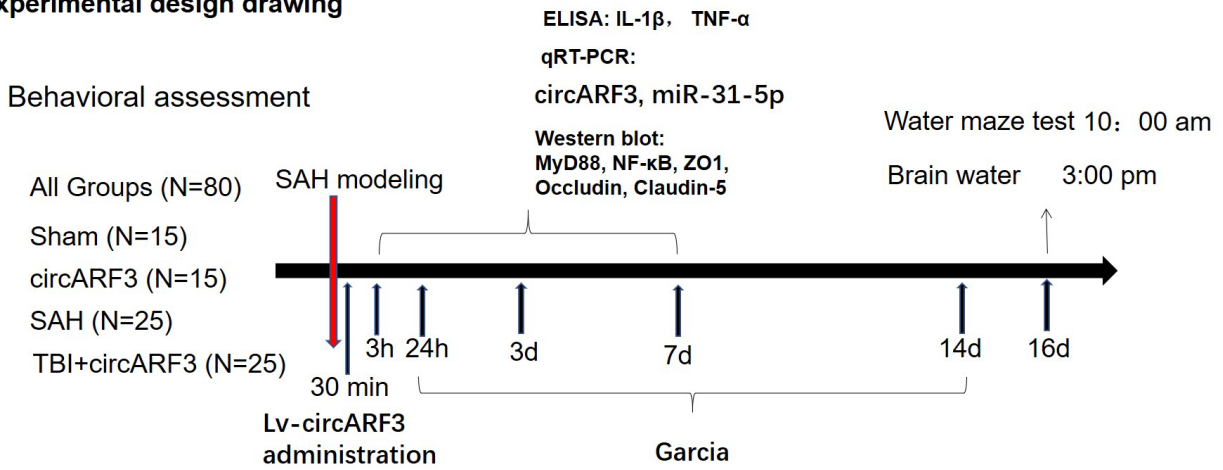


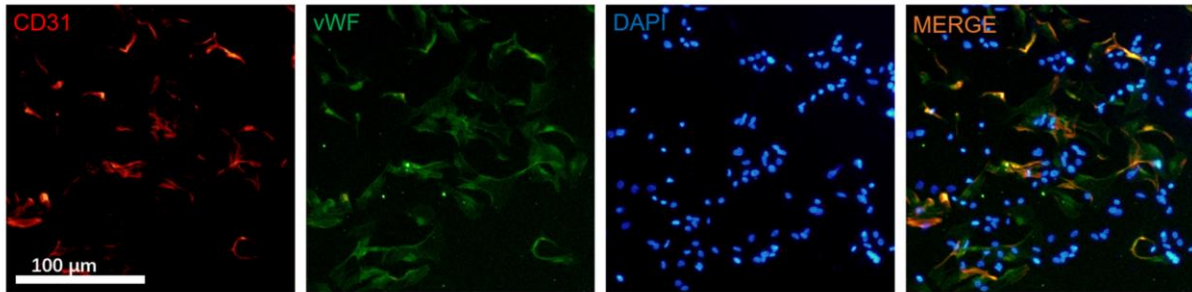
SUPPLEMENTARY FIGURES

Experimental design drawing

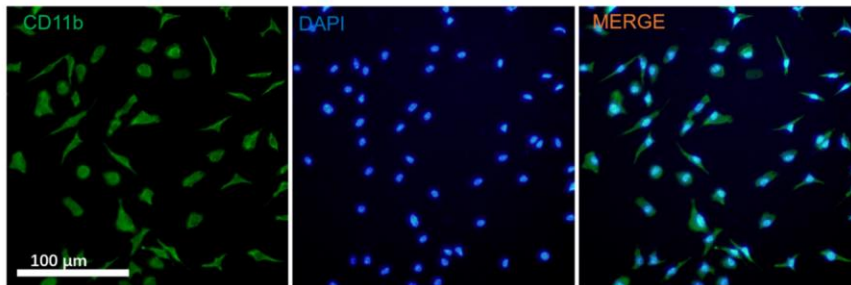


Supplementary Figure 1. The animal experiment procedures were shown.

A



B



Supplementary Figure 2. (A) Cell immunofluorescence was used to identify primary BMECs labeled by CD31 (red) and vWF (green). (B) Cell immunofluorescence was used to identify microglia labeled by CD11b (green).