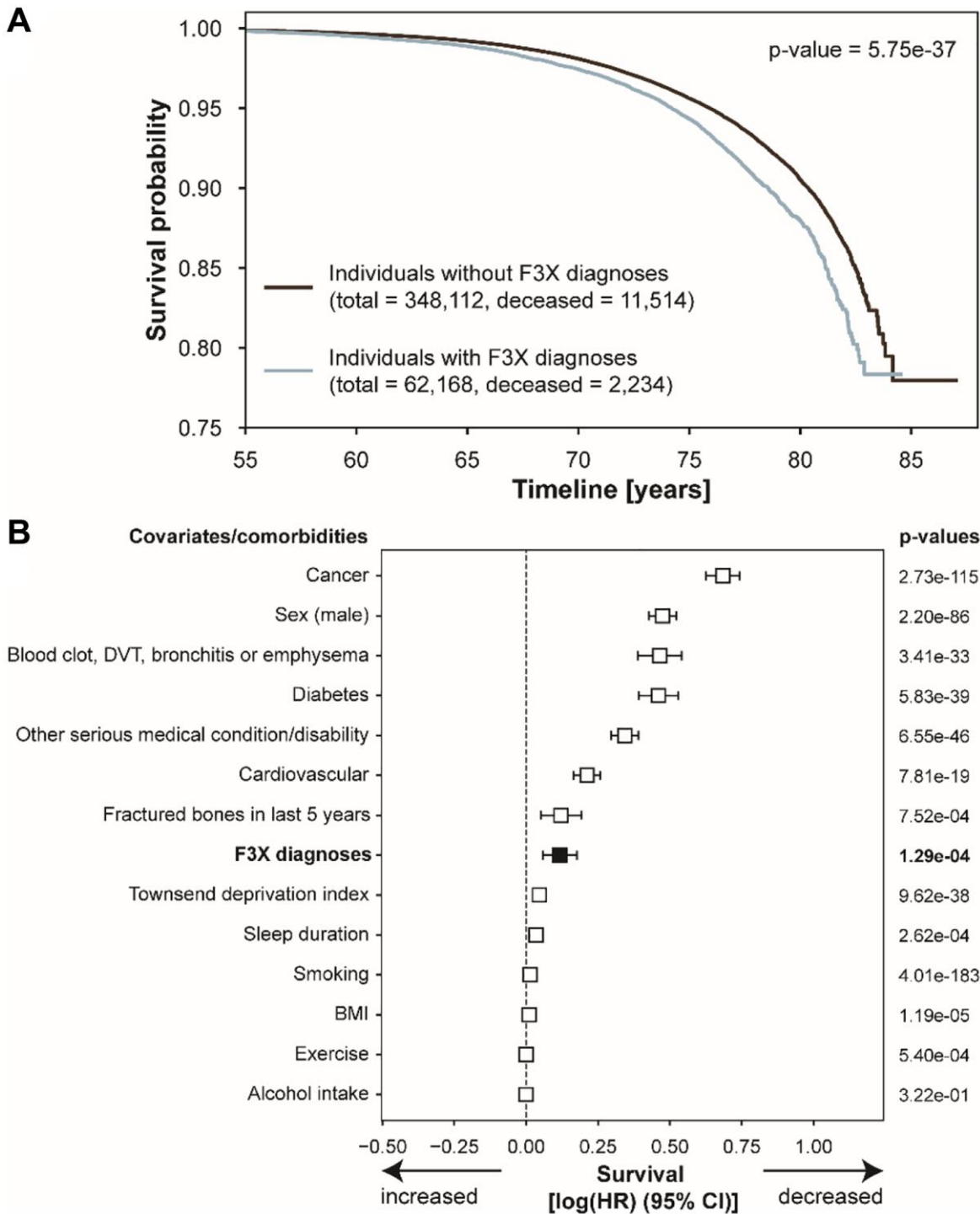
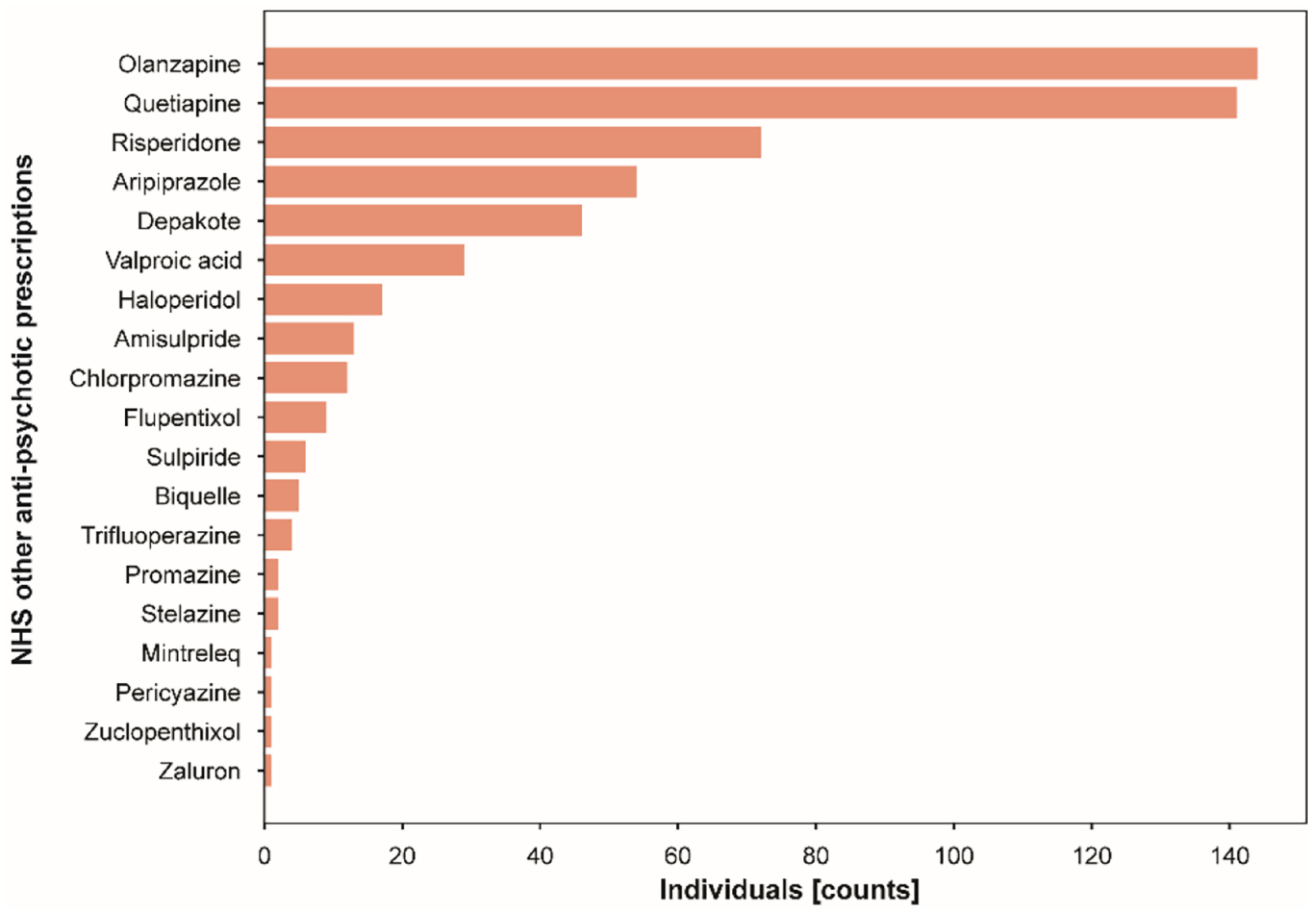


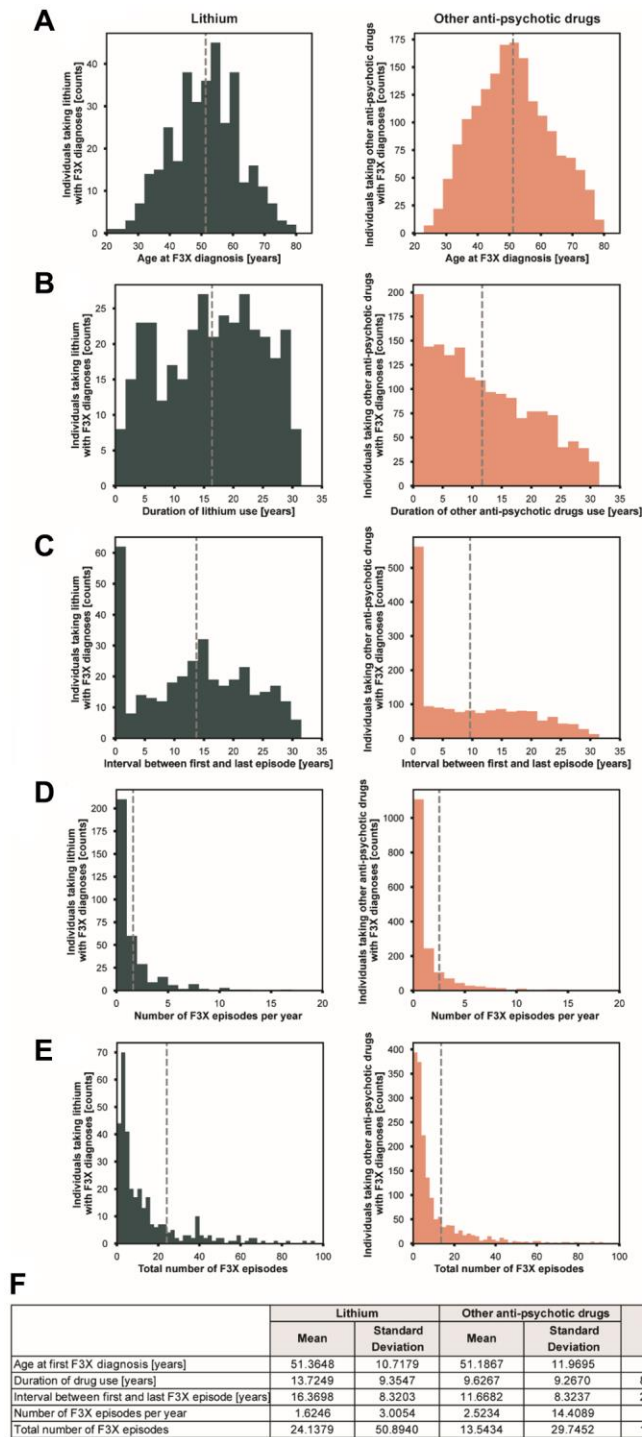
**SUPPLEMENTARY FIGURES**



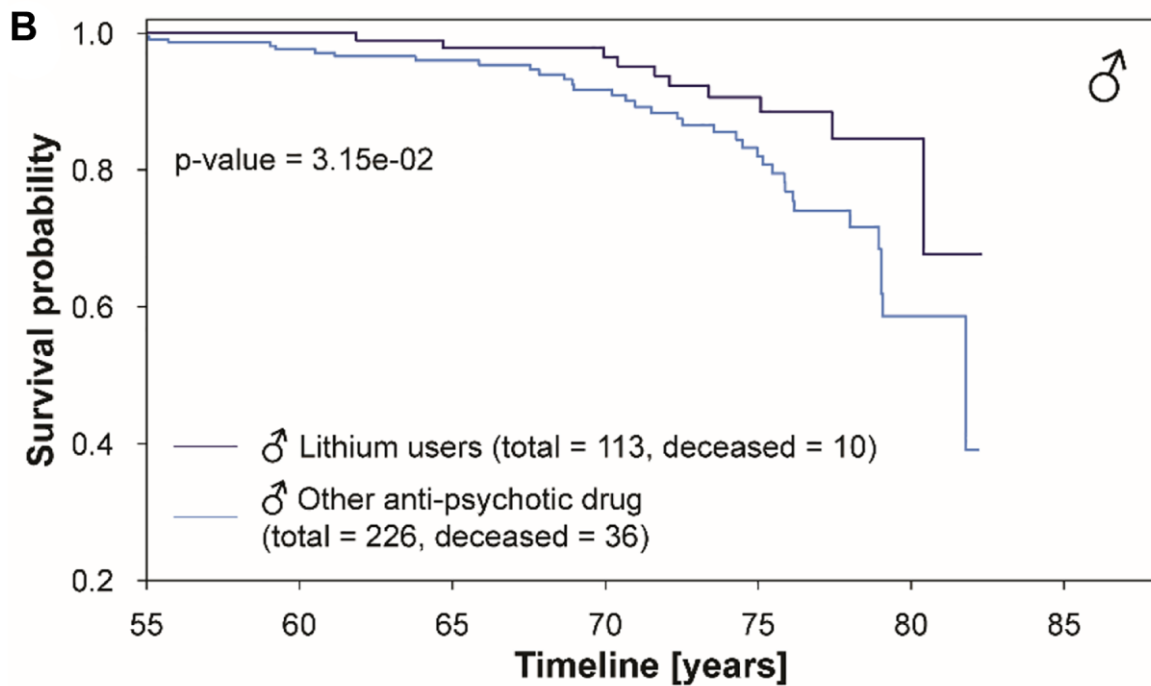
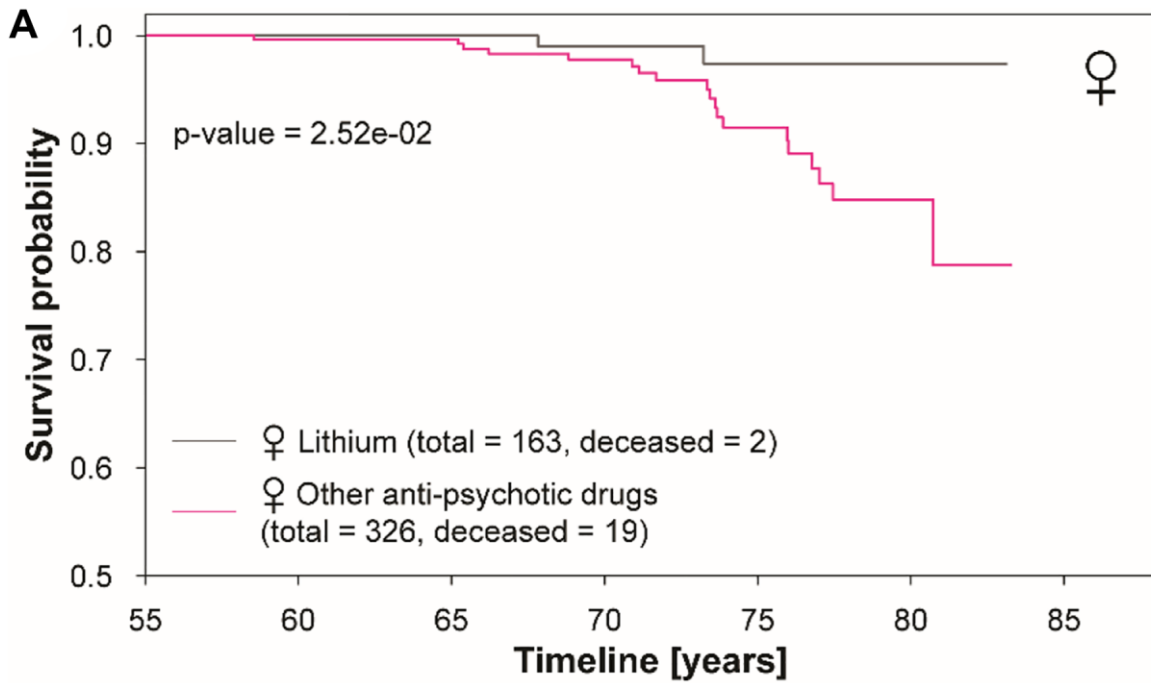
**Supplementary Figure 1.** (A) Kaplan-Meier curve of survival probability in individuals with or without ICD10-defined F3X affective disorders diagnoses in NHS clinical records since 01.01.1990; p-value of the logrank test is reported. Suicides are included into the dataset. (B) Forest Plot of Cox proportional hazard multivariable modeling on overall survival in individuals with or without ICD10-defined F3X affective disorders diagnoses in NHS clinical records since 01.01.1990. Suicides are included into the dataset. Abbreviations: DVT: deep vein thrombosis; BMI: body mass index.



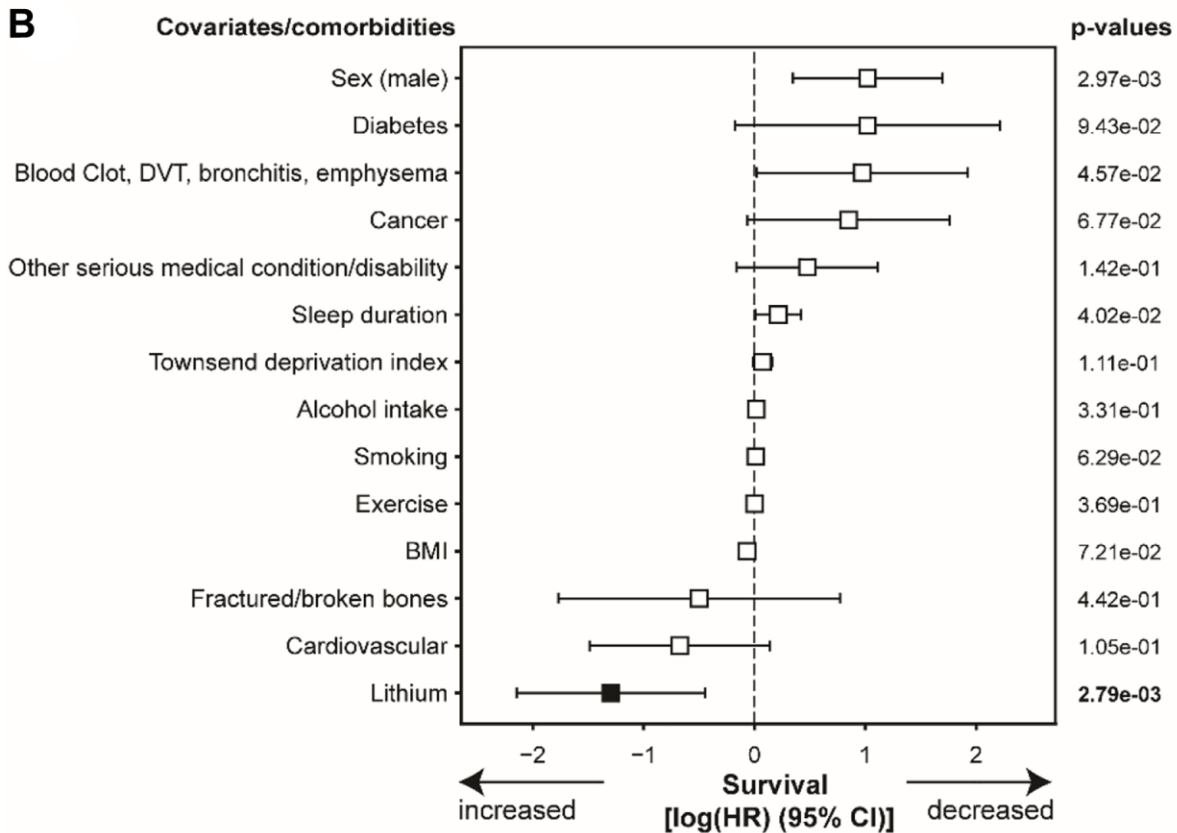
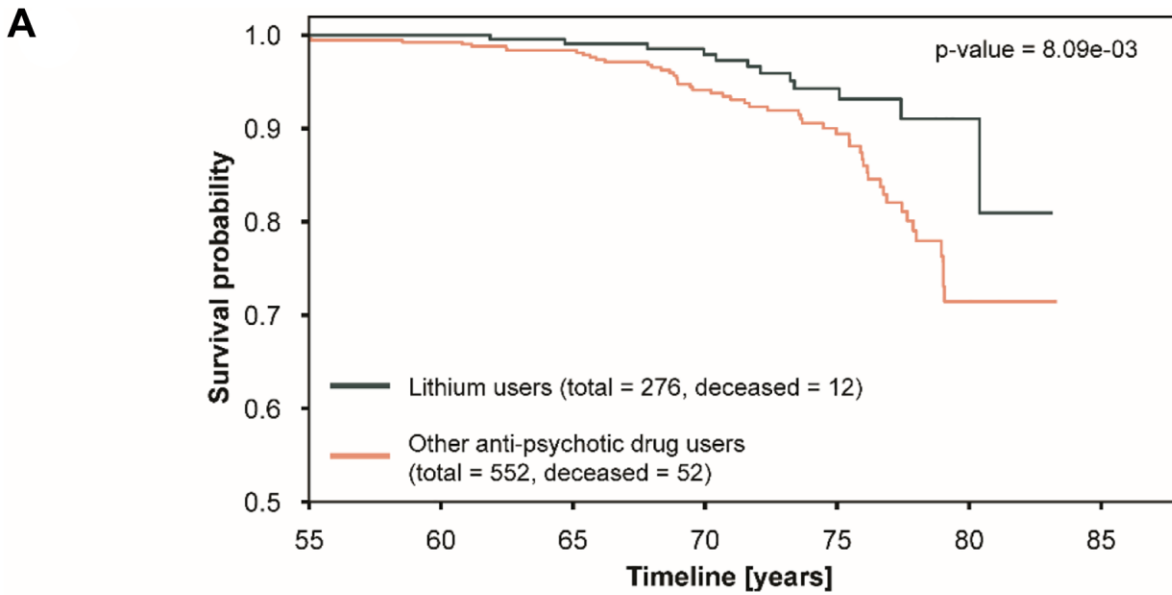
**Supplementary Figure 2.** Use of non-lithium anti-psychotic medications in individuals with ICD10-defined F3X affective disorders diagnoses in NHS clinical records since 01.01.1990 matched to lithium users.



**Supplementary Figure 3.** Comparison of F3X-diagnosed lithium users (left) or users of other anti-psychotic drugs (right) for: (A) Age at F3X diagnosis; (B) Duration of lithium use; (C) Interval between first and last episode; (D) Number of F3X episodes per year; (E) Total number of F3X episodes. (F) Summary table with mean, standard deviation and *p*-value of the comparison of lithium users and users of other anti-psychotic drugs.



**Supplementary Figure 4.** (A) Kaplan-Meier curve of survival probability in female individuals with ICD10-defined F3X affective disorders diagnoses taking lithium and matched subjects prescribed other anti-psychotic medications. Suicides are excluded from the dataset.  $p$ -value of the logrank test is reported. (B) Kaplan-Meier curve of survival probability in male individuals with ICD10-defined F3X affective disorders diagnoses taking lithium and matched subjects prescribed other anti-psychotic medications. Suicides are excluded from the dataset.  $p$ -value of the logrank test is reported.



**Supplementary Figure 5.** (A) Kaplan-Meier curve of survival probability in individuals with ICD10-defined F3X affective disorders diagnoses taking lithium and matched subjects prescribed other anti-psychotic medications. Suicides are excluded from the dataset. *p*-value of the logrank test is reported. (B) Forest Plot of Cox proportional hazard multivariable modeling on overall survival in individuals in the cohort described in A. Suicides are excluded from the dataset. Abbreviations: DVT: deep vein thrombosis; BMI: body mass index.