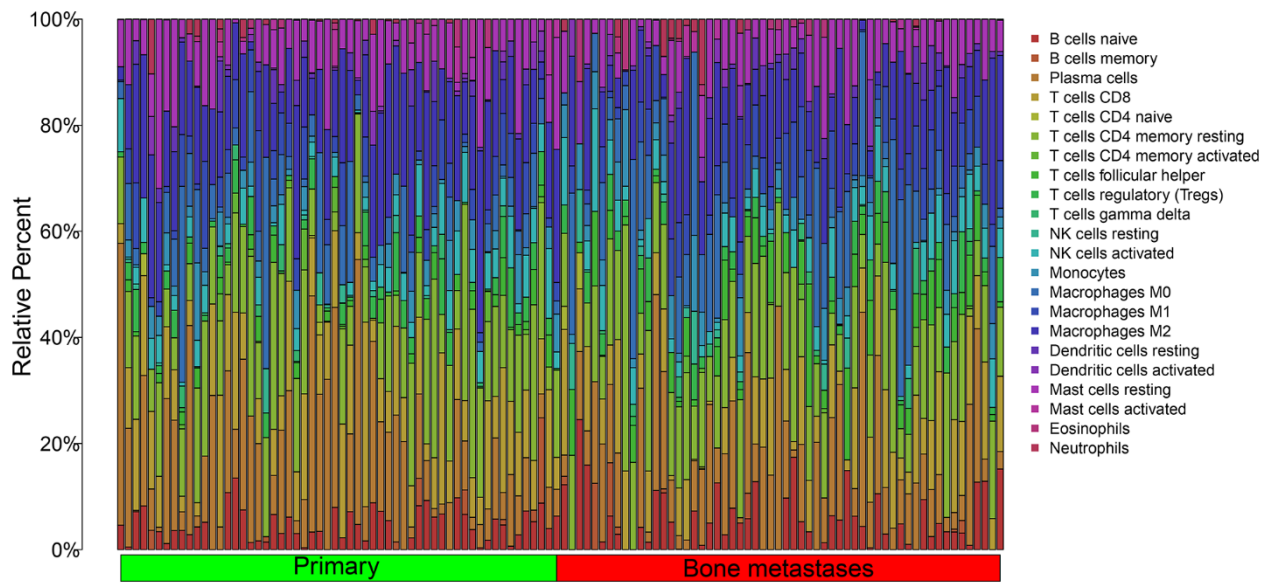


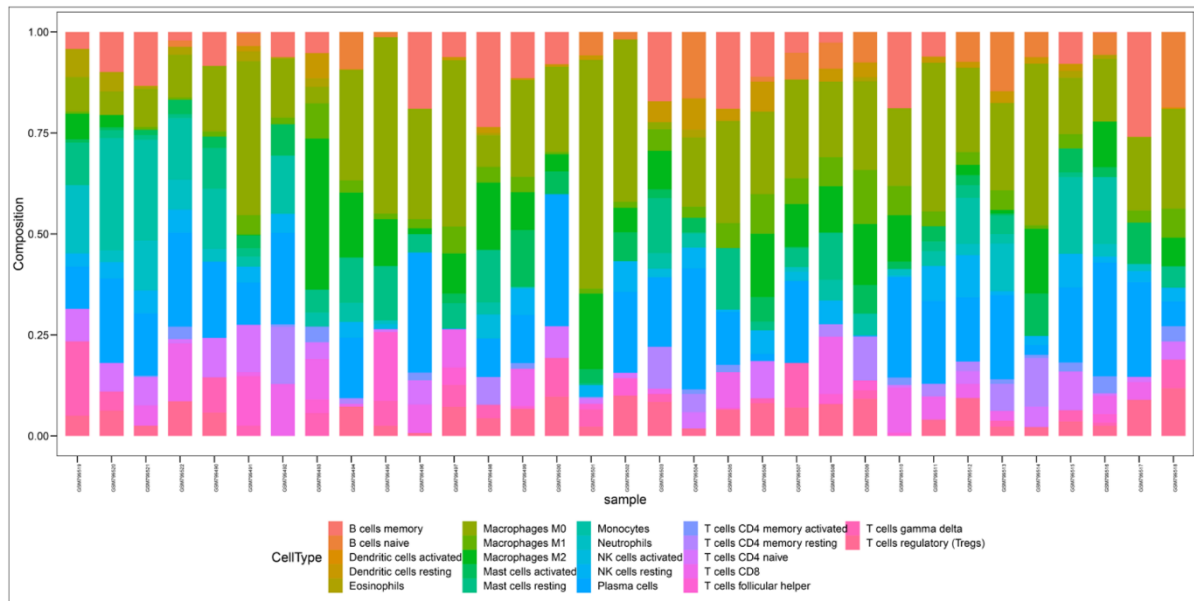
SUPPLEMENTARY FIGURES



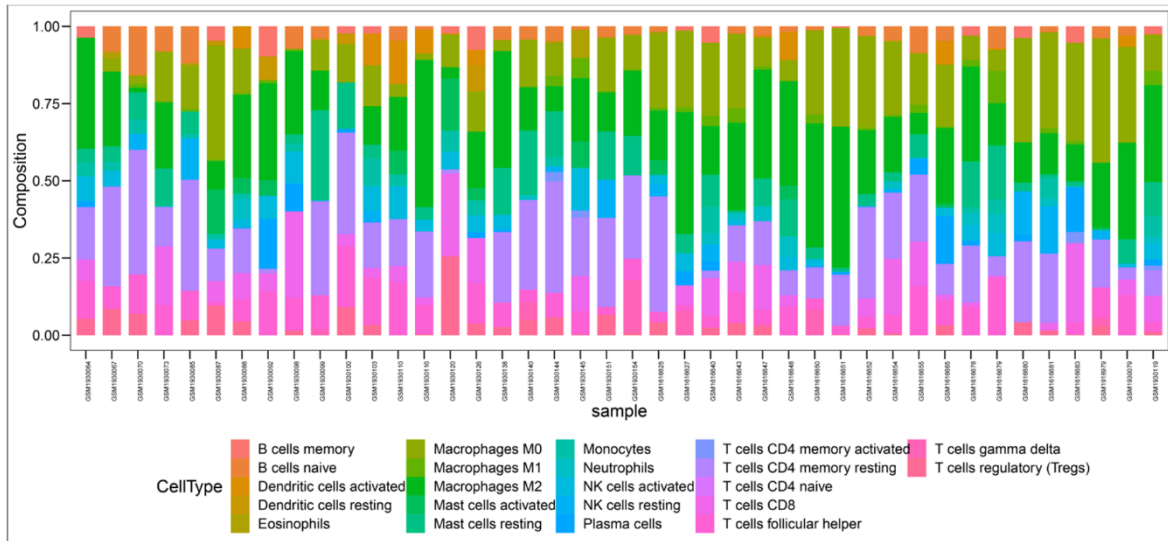
Supplementary Figure 1. The proportion of 22 types of TIICs was compared between primary and bone metastases of PCa in the training set.

A

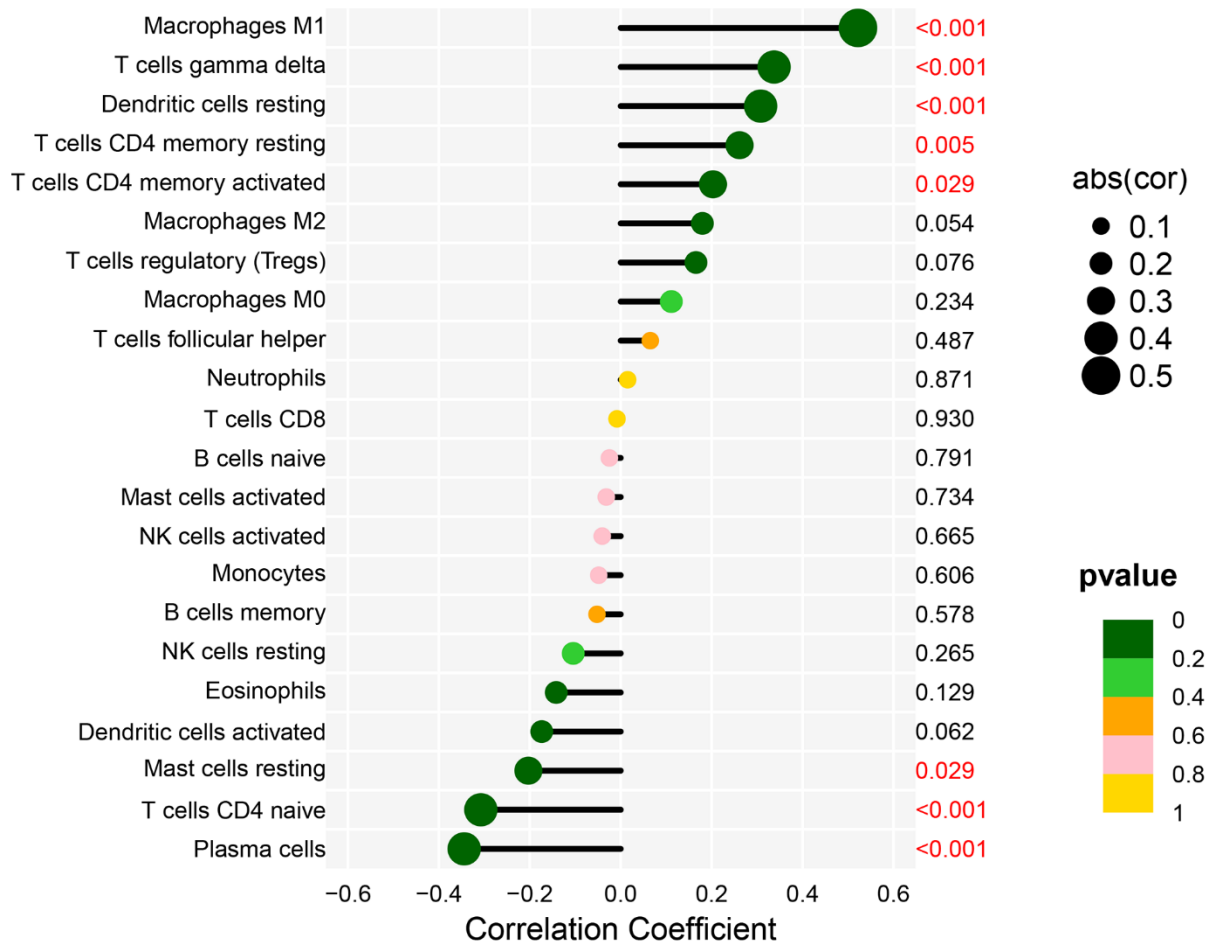
GSE32269

**B**

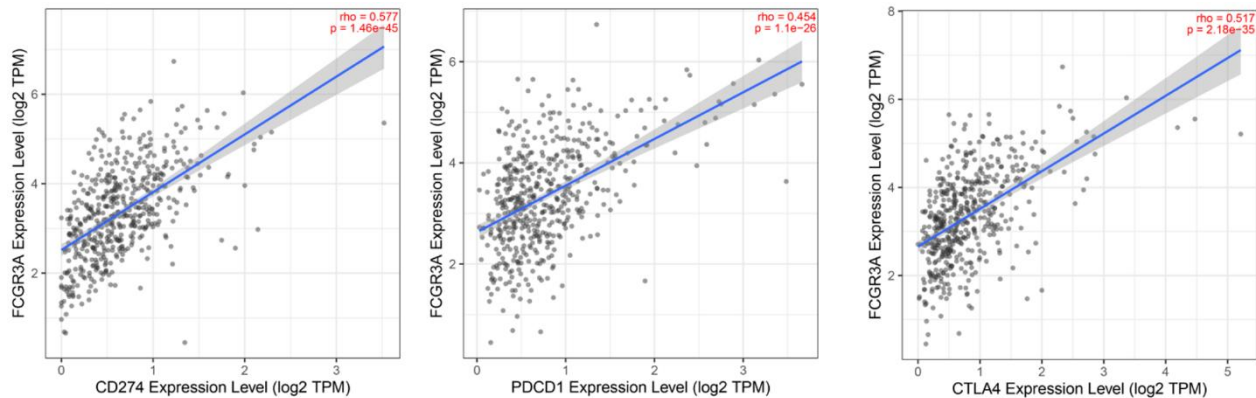
GSE77930



Supplementary Figure 2. The proportions of 22 TICS in each sample of GSE32269 (A) and GSE77930 (B) are exhibited.

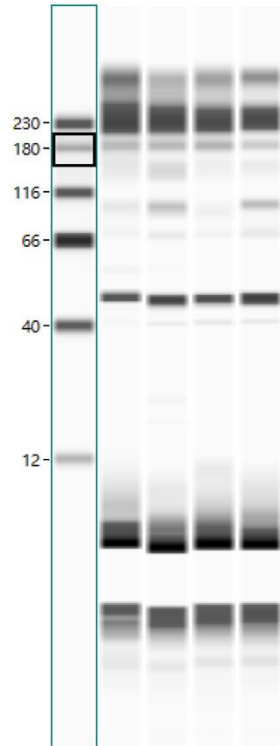


Supplementary Figure 3. Correlation analysis between FCGR3A expression and 22 types of TILs in the training set.



Supplementary Figure 4. In the TIMER2.0 database, correlations were analyzed between FCGR3A expression and CD274 (PD-L1), PDCD1 (PD-1), and CTLA4 expression, respectively.

Figure 7E original WB image



Cutting position

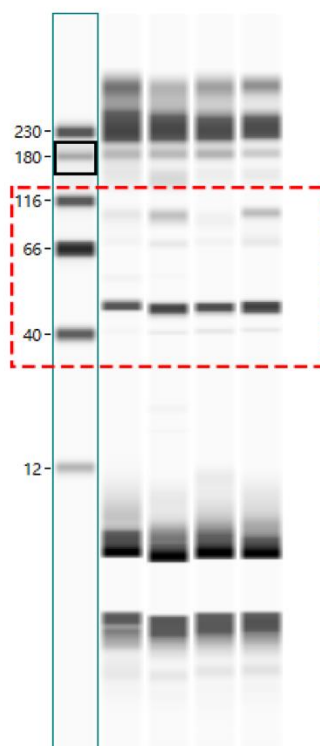


Figure 7E

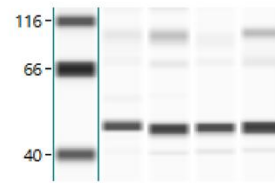
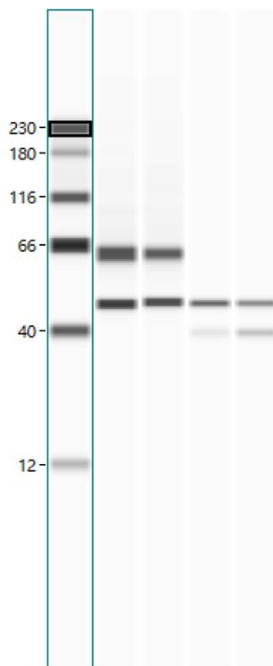


Figure 8C original WB image



Cutting position

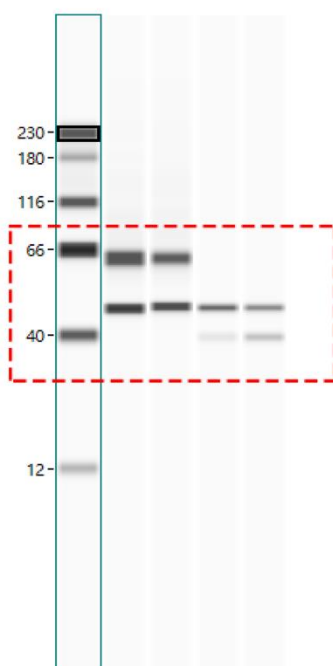
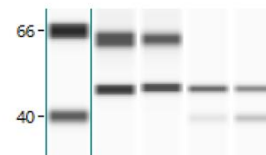


Figure 8C



Supplementary Figure 5. The full images of the original immunoblots.