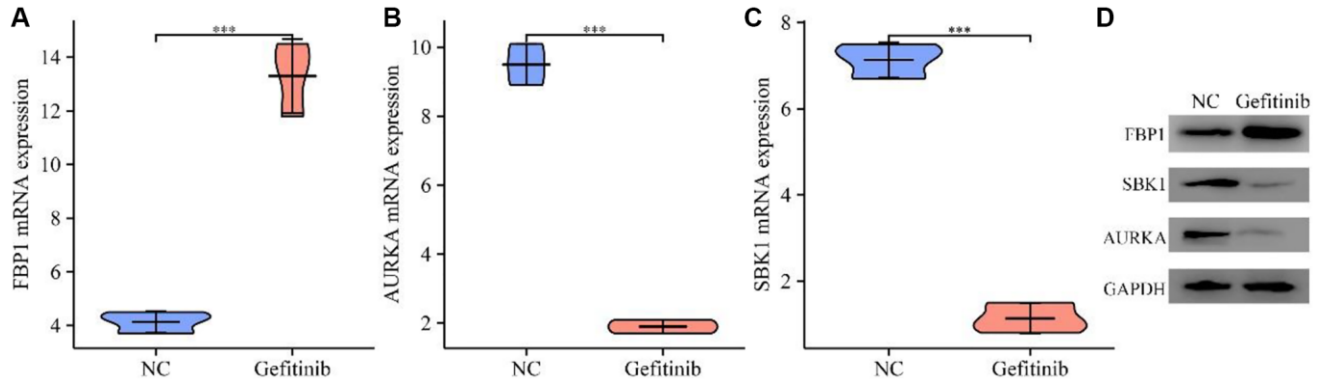
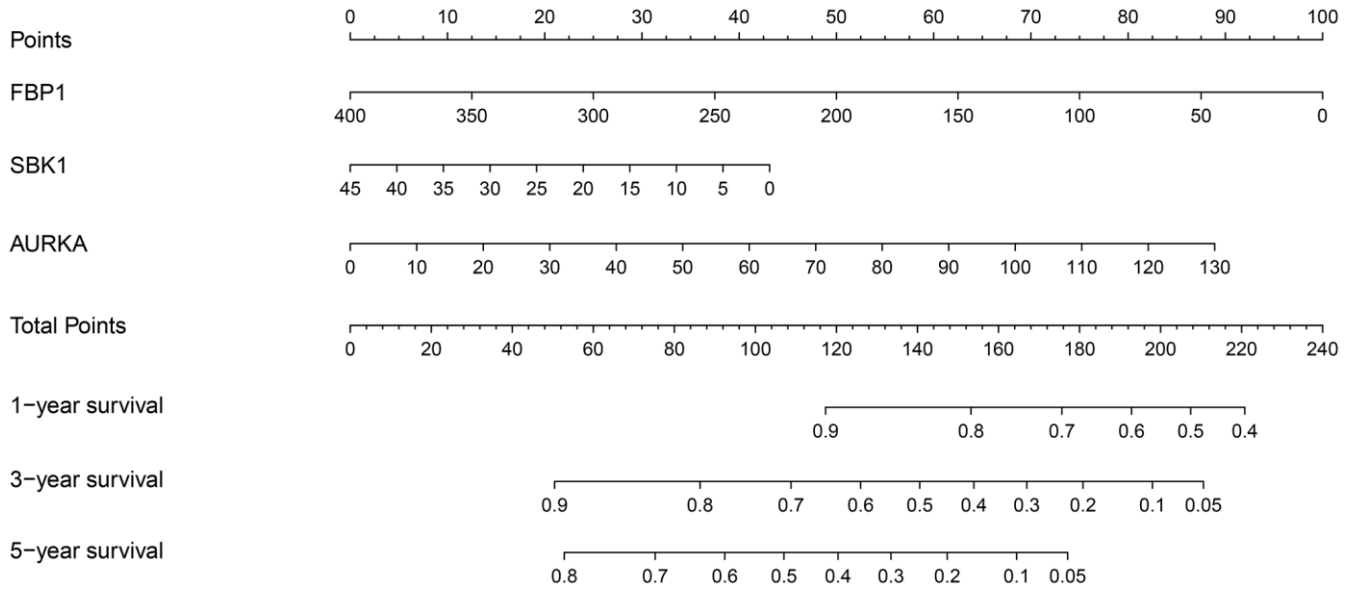


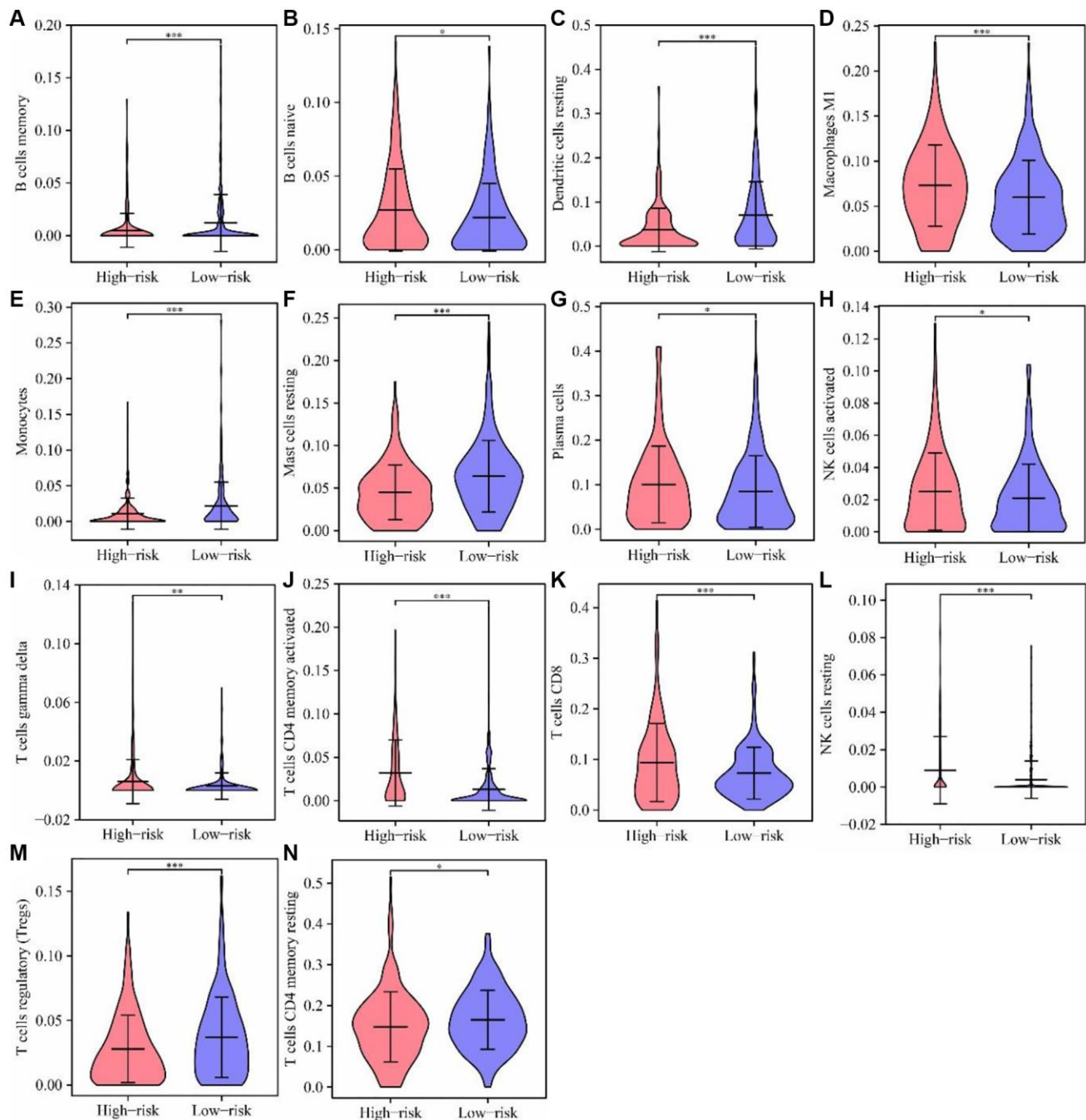
SUPPLEMENTARY FIGURES



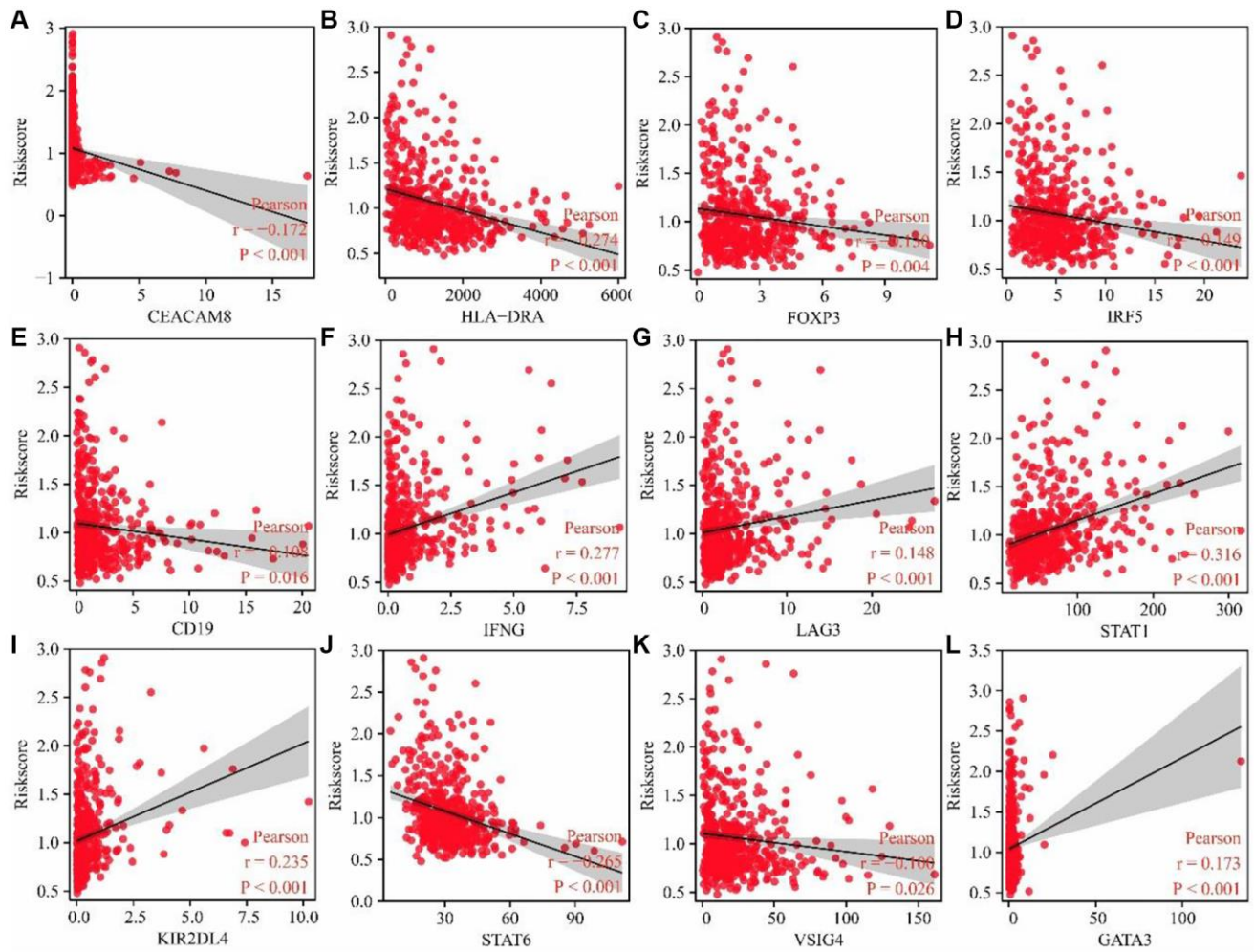
Supplementary Figure 1. Gefitinib could regulate the levels of FBP1, AURKA, and SBK1 in PC9 cells. (A–C) mRNA levels; (D) Protein levels.



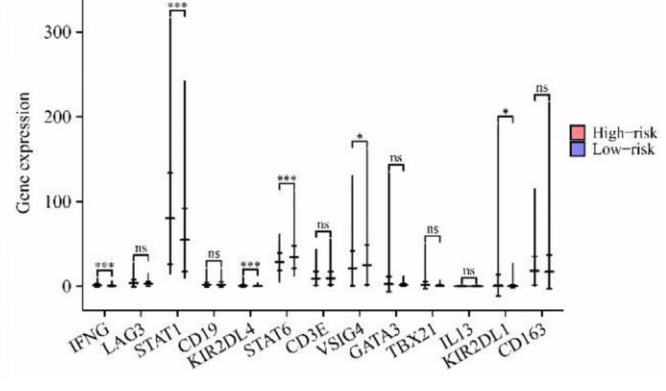
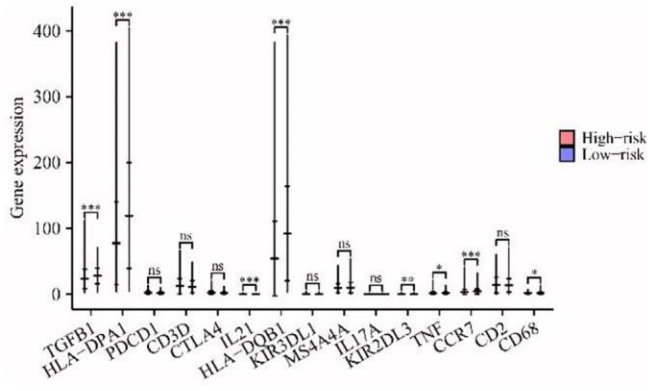
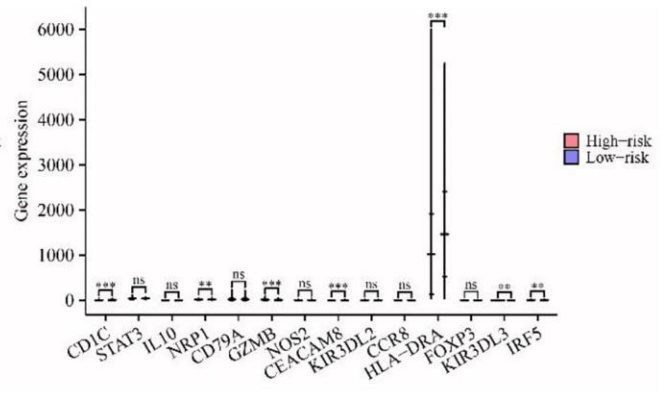
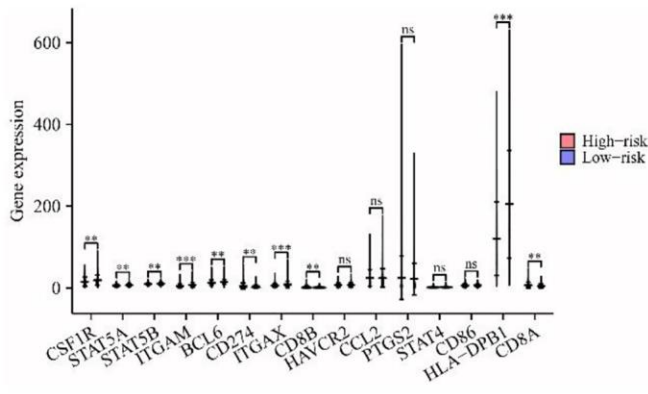
Supplementary Figure 2. Nomogram of risk model genes.



Supplementary Figure 3. The levels of immune cells in high-risk and low-risk in the risk model. (A) B cells memory; (B) B cells naive; (C) Dendritic cells resting; (D) Macrophages M1; (E) Monocytes; (F) Mast cells resting; (G) Plasma cells; (H) NK cells activated; (I) T cells gamma delta; (J) T cells CD4 memory activated; (K) T cells CD8; (L) NK cells resting; (M) Regulatory T cells (Tregs); (N) T cells CD4 memory resting.



Supplementary Figure 4. Risk model related to the immune cell markers in LUAD. (A) CEACAM8; (B) HLA-DPA1; (C) FOXP3; (D) IRF5; (E) CD19; (F) IFNG; (G) LAG3; (H) STAT1; (I) KIR2DL4; (J) STAT6; (K) VSIG4; (L) GATA3. Abbreviation: LUAD: lung adenocarcinoma.



Supplementary Figure 5. Cell markers in high- and low-risk groups.