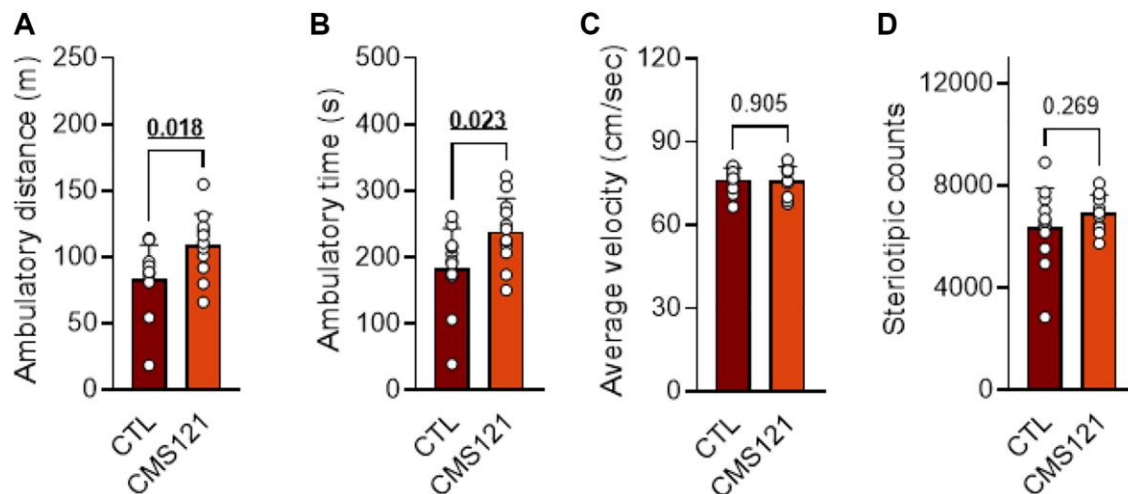


SUPPLEMENTARY FIGURE



Supplementary Figure 1. Locomotor activity in animals freely exploring an open field two weeks after treatment began. Animals were exposed to the open field for 5 min and their activity recorded and analyzed with the Anymaze software. (A) Total distance traveled; (B) ambulatory time, (C) average velocity, and (D) stereotypic movements. Data are presented as mean + SD ($n = 12$). Bold underlined p -values indicate statistical significance.